

## Model covered

AX-505

## Equipment used

Windows computer (with built-in USB 2.0 port)  
Micro USB cable

- Cables designed only for charging cannot be used. Always use a micro USB cable that supports data transmission.

## Supported operating systems

Windows 7 (32/64-bit)  
Windows 8 (32/64-bit)  
Windows 8.1 (32/64-bit)  
Windows 10 (32/64-bit)  
(as of July 2022)

## 1. Check the firmware version

### 1 Turn the unit on.

### 2 Press and hold the remote control DIMMER button (for three seconds).

The blinking INPUT SELECTOR knob indicators show the version.

Version	LINE 1	LINE 2	LINE 3	XLR
1.00	Blinking	Unlit	Unlit	Unlit
1.01	Blinking	Blinking	Unlit	Unlit
1.02	Blinking	Blinking	Blinking	Unlit
1.03	Blinking	Blinking	Blinking	Blinking
1.04	Unlit	Blinking	Blinking	Blinking
1.05	Unlit	Unlit	Blinking	Blinking

Microsoft and Windows are either registered trademarks or trademarks of Microsoft Corporation in the United States and/or other countries.

Other company names and product names in this document are the trademarks or registered trademarks of their respective owners.

## 2. Install the DFU driver

Set the unit's STANDBY/ON switch to STANDBY, and begin the following operations before connecting it with the computer.

### NOTE

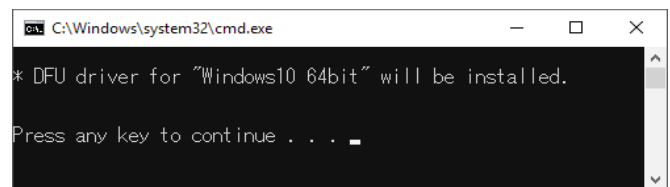
- After installing the DFU driver on the computer once, installing it again will not be necessary. If installation is complete, proceed to "3. Update the firmware".
- The screens used in these instructions are from Windows 10.

### 1 Uncompress the downloaded file.

The following files will be created.

- Win\_DFU\_driver.exe
- AX505\_updater\_xxxx.exe (xxxx is the firmware version)

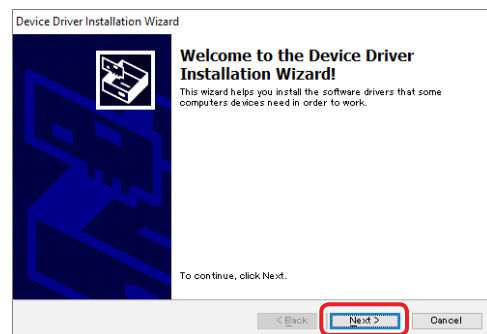
### 2 Double-click Win\_DFU\_driver.exe, and press the Enter key.



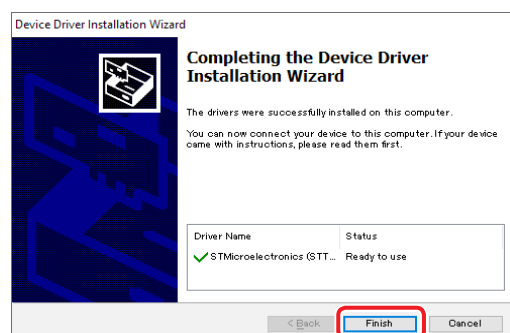
### NOTE

If a "User Account Control" pop-up message appears during installation, click "Yes".

### 3 When the Device Driver Installation Wizard appears, click "Next".



### 4 Click "Finish".



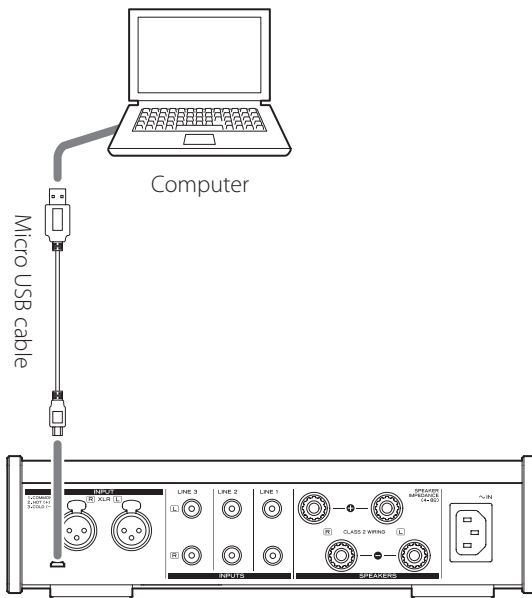
### 3. Update the firmware

A micro USB cable is necessary to update the firmware. **Use a commercially-available cable.**

- Cables designed only for charging cannot be used. Always use a micro USB cable that supports data transmission.

**1 Put the unit into standby, and disconnect everything from it, including the power cord. Then, leave the unit as is and wait for two minutes.**

**2 Use a micro USB cable to connect the computer to the USB Micro-B maintenance port on the back of the unit.**



- Refer to the unit's operation manual for the location of the maintenance port.
- Cables designed only for charging cannot be used. Always use a micro USB cable that supports data transmission.

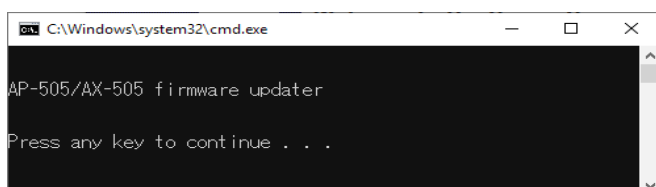
**3 Connect the power cord to the unit.**

Connecting the power cord while the unit is connected to a computer by USB puts the unit into update mode.

At this time, leave the STANDBY/ON switch set to STANDBY.

- The USB driver will be installed on the computer automatically. Wait until it is complete. When first connected, loading the driver takes some time.

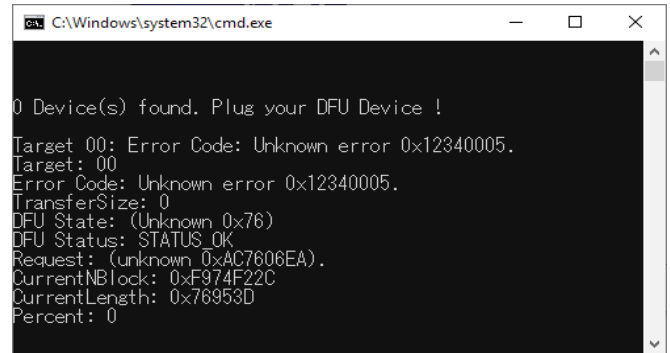
**4 Double-click AX505\_updater\_xxxx.exe, and press the Enter key.**



Do not disconnect the unit's power cord or the micro USB cable while updating. Doing so could make the unit not operate properly.

#### NOTE

The following screen will appear if the unit is not recognized by the computer. Click the x at the top right of the window to close it.



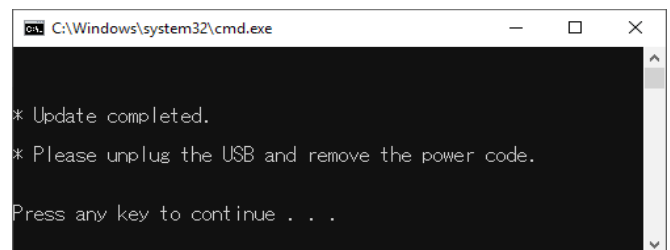
If the screen above appears, check the following item and repeat the procedures from step 1.

- The DFU driver is installed.

#### ATTENTION

- Cables designed only for charging cannot be used for firmware updates. Always use a micro USB cable that supports data transmission.
- Connecting to a different USB port on the computer might allow it to recognize the unit.
- To cancel updating when the above screen appears, disconnect the power cord of the unit from the outlet once.

**5 When “\* Update completed.” appears, press the Enter key to close the window.**



**6 Disconnect the micro USB cable and power cord.**

After disconnecting the power cord, leave the unit as is and wait for two minutes.

This will switch the unit from update mode back to normal operation mode.

- Follow the procedures in “1. Check the firmware version” on the previous page to check the firmware version.