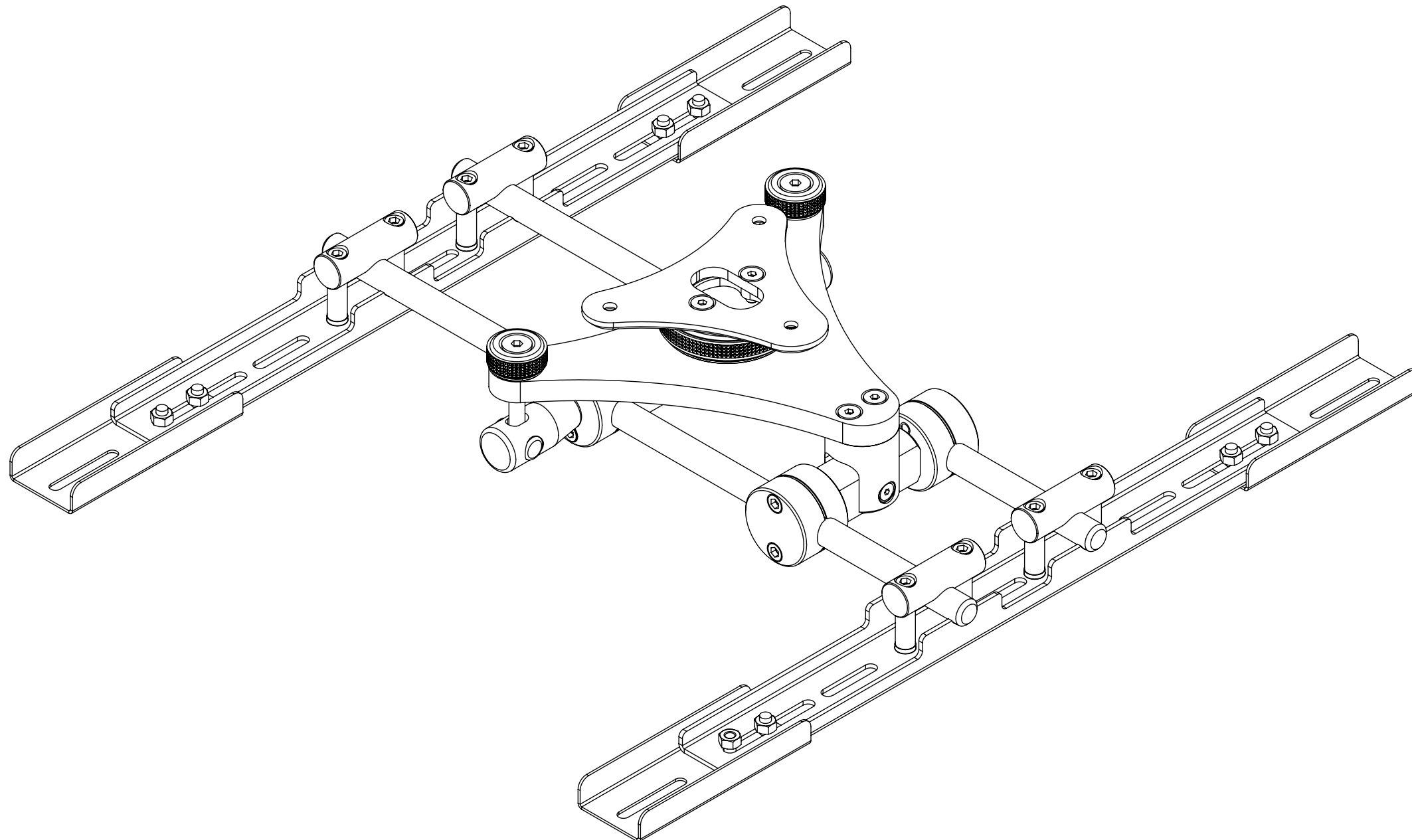


PM XL

PROJECTOR MOUNT SYSTEM XL



future automation



PM XL

PROJECTOR MOUNT SYSTEM XL



future automation

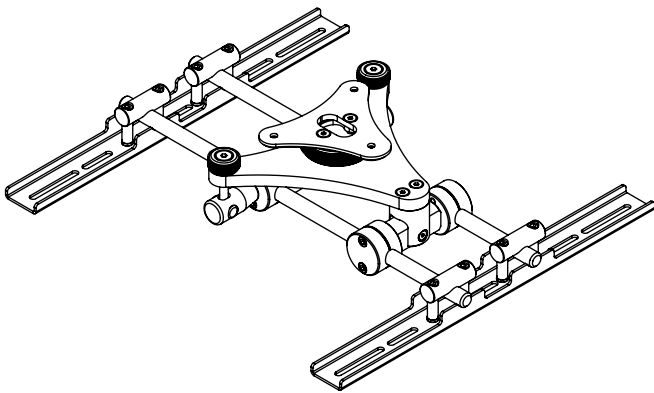
SPECIFICATION	MEASUREMENTS
Product Dimensions	438 x 410 x 100mm (17.2 x 16.1 x 3.9")
Maximum Weight Capacity	35Kg (77lb)
Depth From Ceiling	100mm (3.9")
Product Weight	4.3Kg (9.5lb)
Packaging Dimensions	490 x 460 x 150mm (19.3 x 18.1 x 5.9")
Shipping Weight	7Kg (15.5lb)
Maximum Rotation	360°
Movement Type	Manual
Adjustments	Pitch, Roll and Yaw
Product Options / Features	Projector specific mounts / adapters, Custom RAL paint finishes
Package Contents	Mechanism, Extension Plates x4
Marine Suitable	Yes (Indoor)

PM XL PROJECTOR MOUNT SYSTEM XL



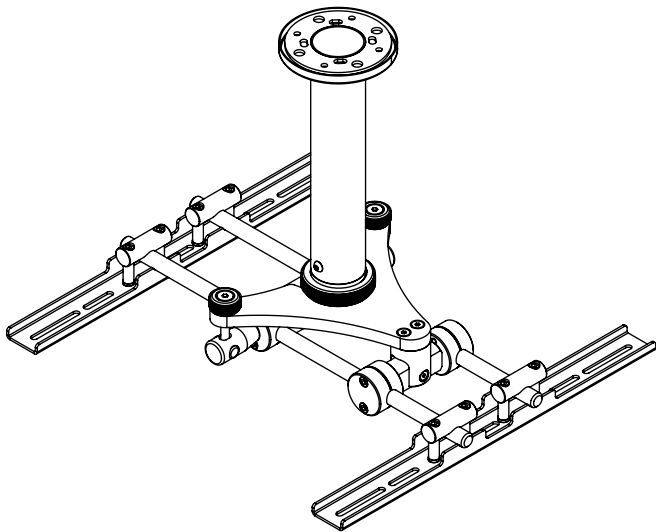
future automation

CEILING FIXTURE OPTIONS



SURFACE MOUNTED

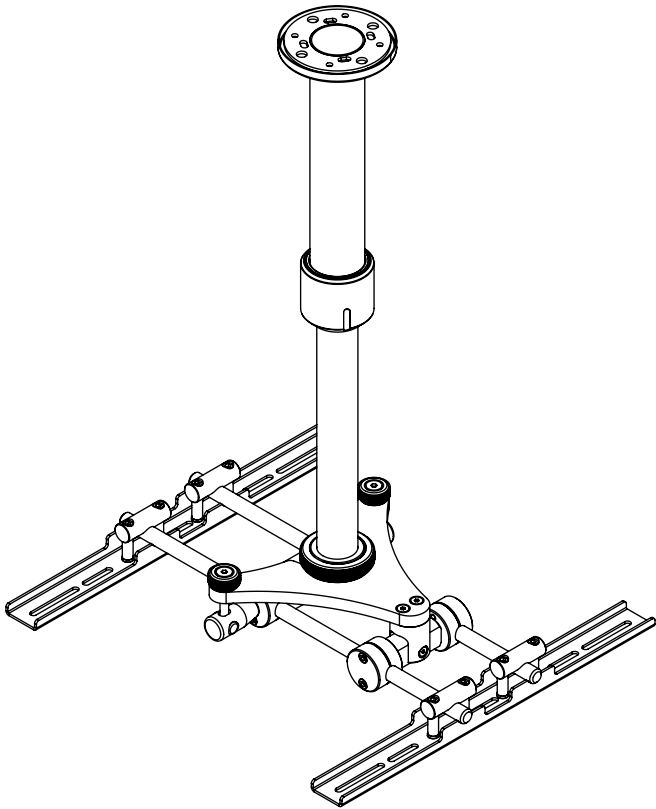
Leaves projector 100mm [4"] from ceiling for a neat stylish look.



POLE MOUNTED

Available in different pole length versions, custom length poles can be designed.

Cables exit out of top of 2" diameter stainless steel pole.



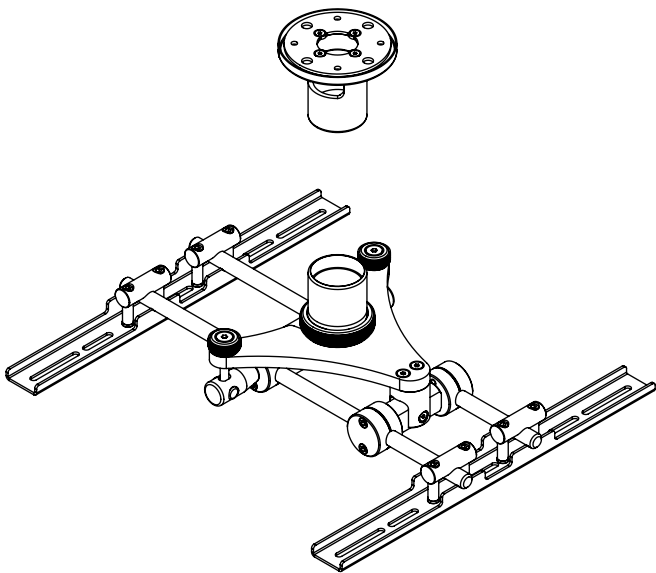
TELESCOPIC POLE MOUNTED

Two telescopic poles lengths available:

PM-TP4-7:
400mm [15.75"] long pole that telescopes down to 700mm [27.5"].

PM-TP7-13:
700mm [27.5"] long pole that telescopes down to 1300mm [51.2"].

Cables exit out of top of 2" diameter stainless steel pole.



NPT PIPE MOUNTED

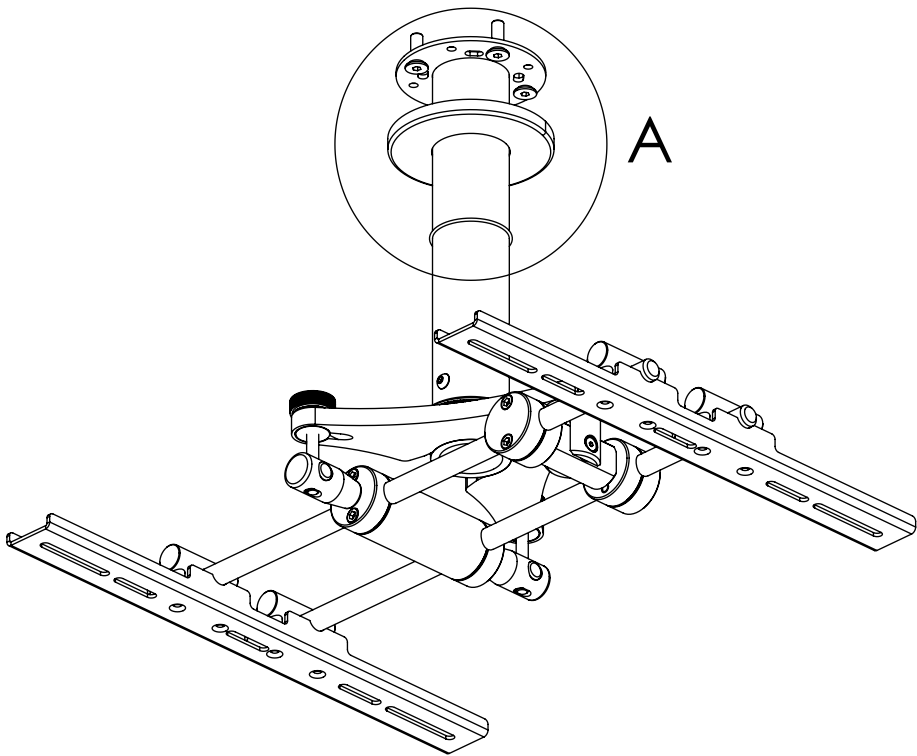
Couplings for standard NPT pipe (pipe not supplied).

Cables exit out of top of NPT ceiling flange coupling or out of side of coupling if required.

PM XL

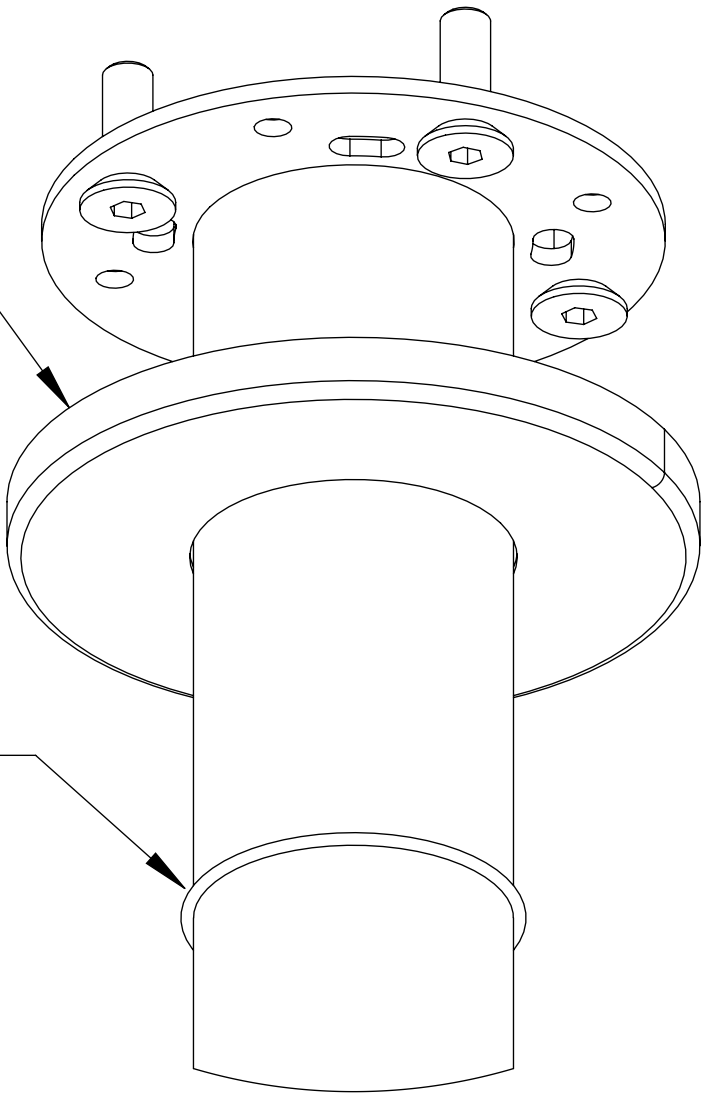
PROJECTOR MOUNT SYSTEM XL

POLE COVER ASSEMBLY



Stainless steel cover slides
over pole to conceal fixings

Rubber O ring to
hold cover in place



DETAIL A

PM XL PROJECTOR MOUNT SYSTEM XL

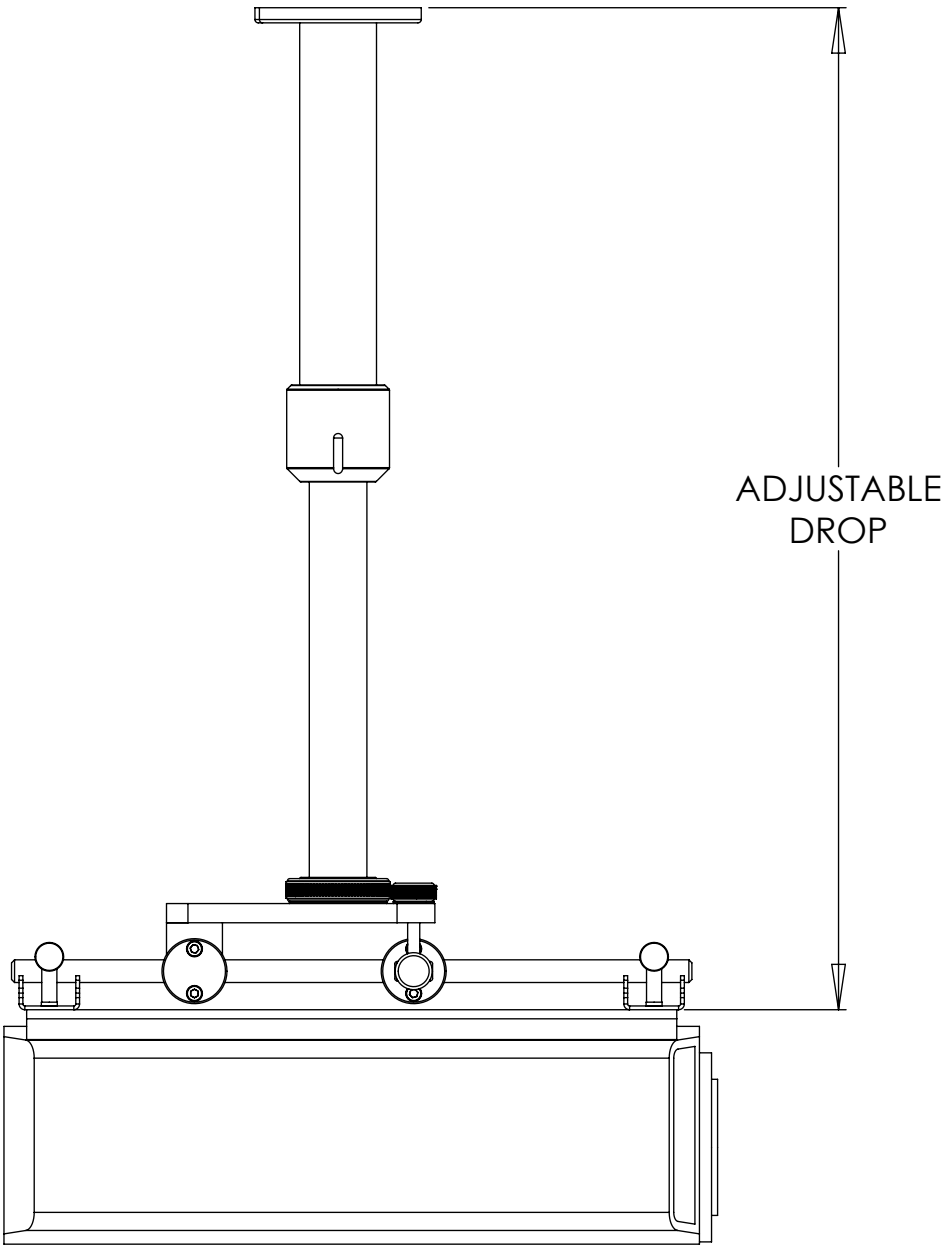
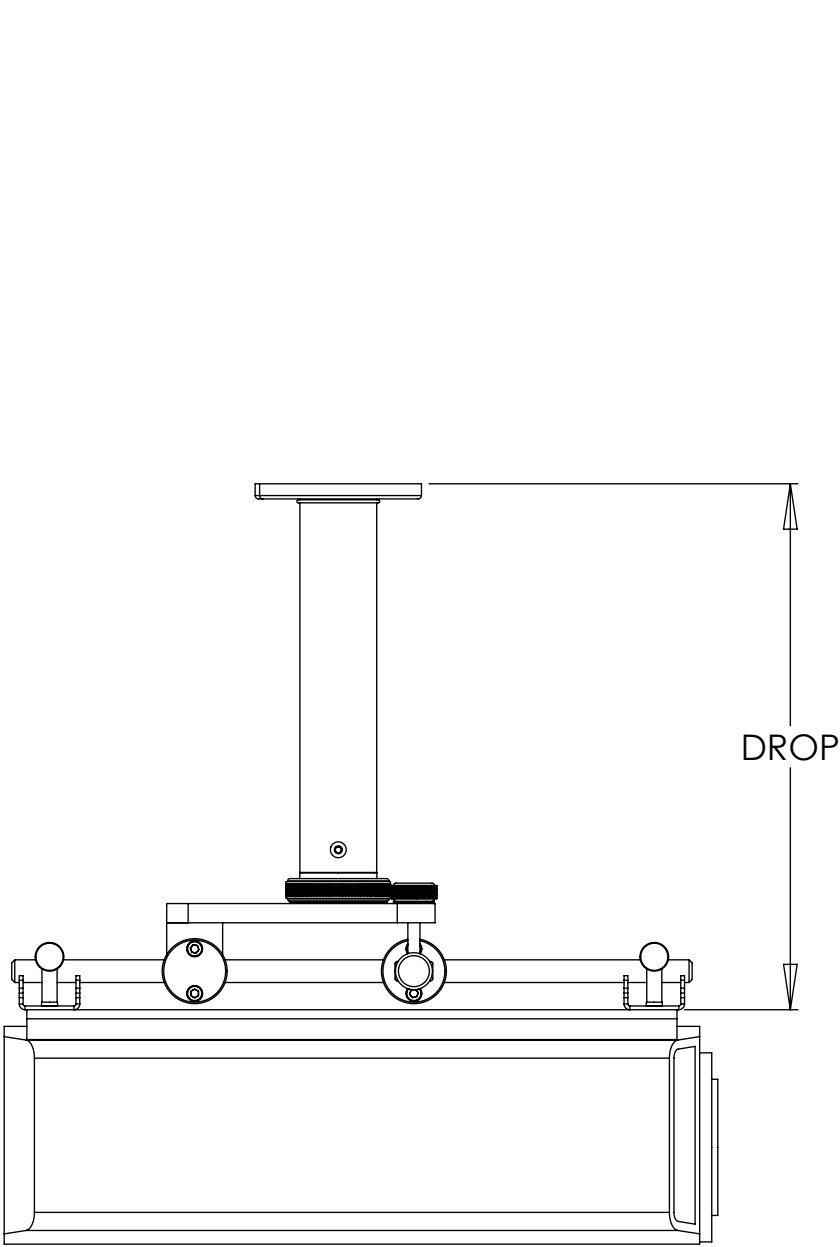


future automation

ADDITIONAL DROP

The PM XL system comes with a flush ceiling mount.

However, if you require the PM XL system to be lowered on a stainless steel pole, you can specify a fixed length pole.



Available Drop Sizes:

250 (250mm [9.8"] - Fixed Pole Length)

500 (500mm [19.7"] - Fixed Pole Length)

750 (750mm [29.5"] - Fixed Pole Length)

PM-TP4-7 (400mm to 700mm [15.7" to 27.6"]
Telescopic Pole)

PM-TP7-13 (700mm to 1300mm [27.6" to 51.2"]
Telescopic Pole)

PM XL

PROJECTOR MOUNT SYSTEM XL

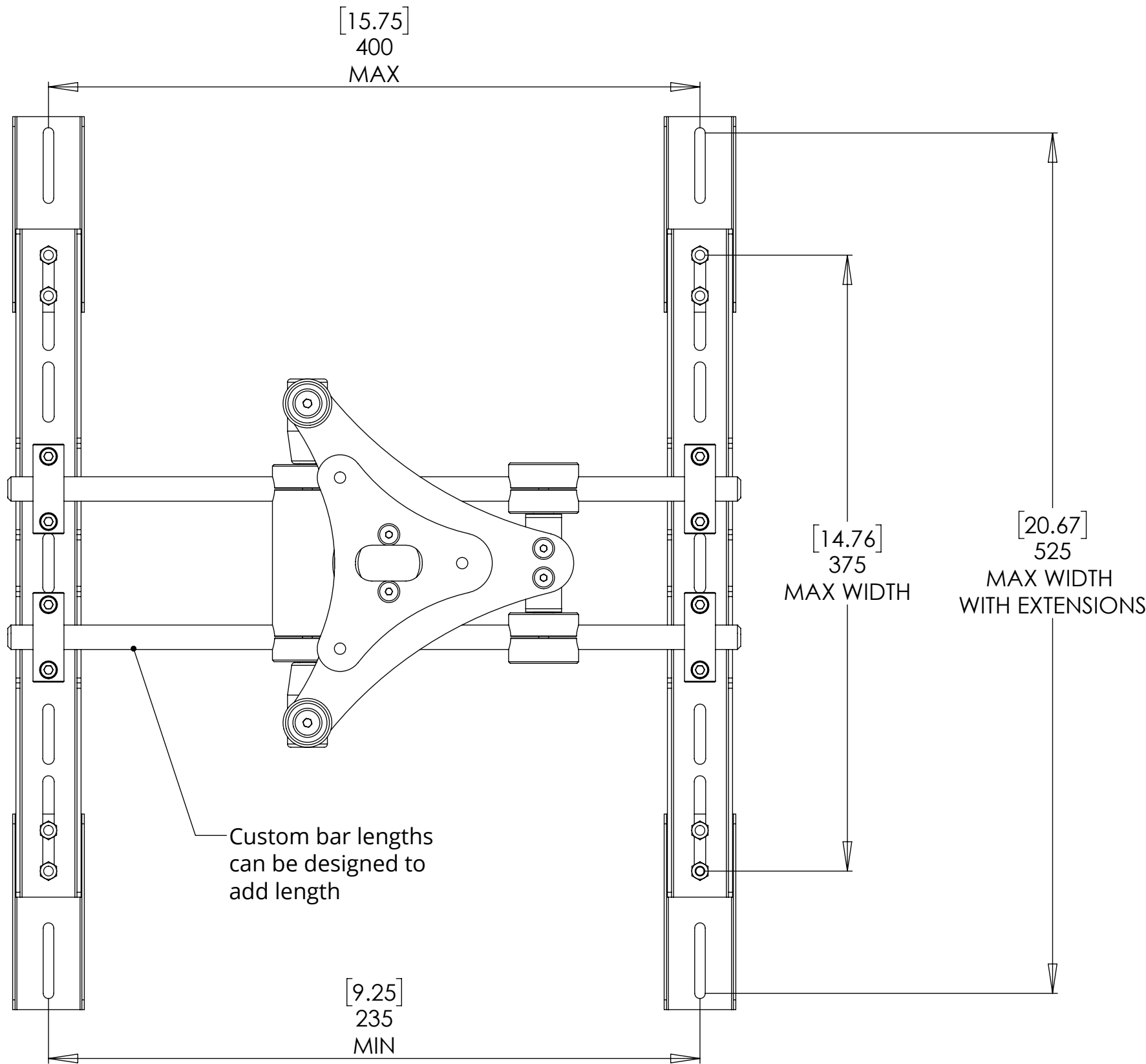


future automation

PROJECTOR MOUNTING DIMENSIONS

This mount set up allows for lots of different mount patterns on projectors.

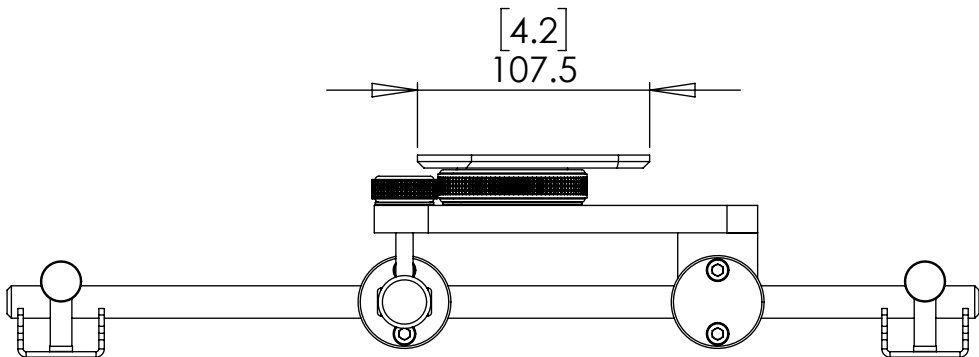
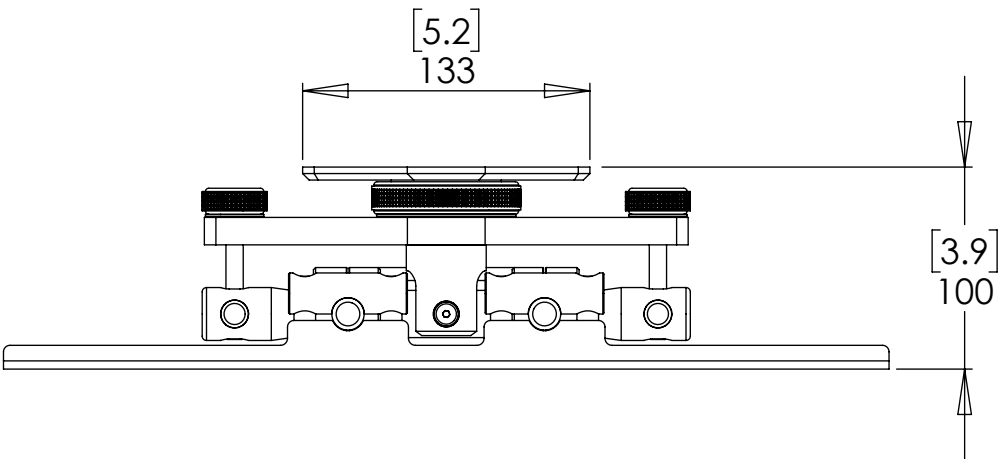
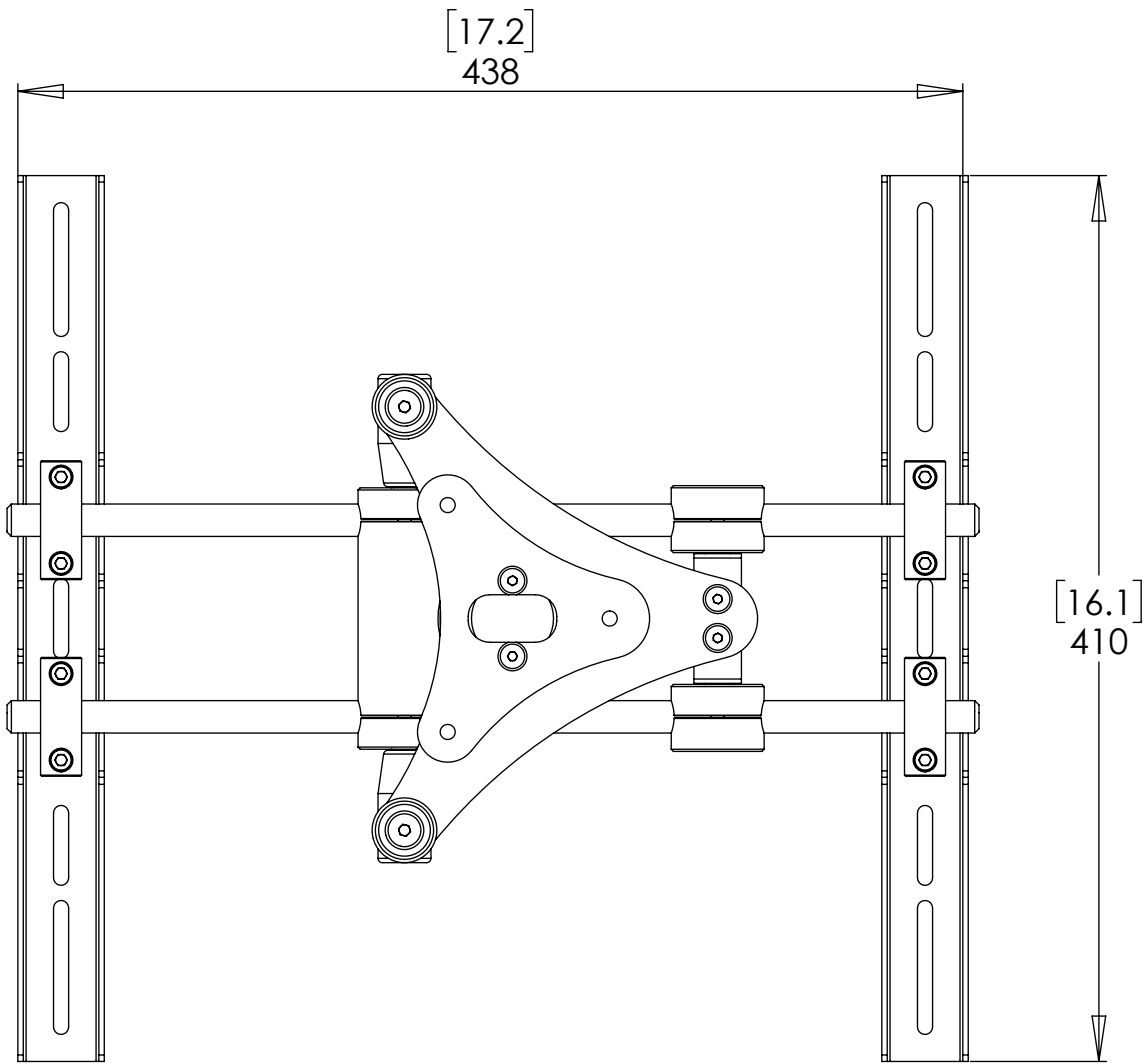
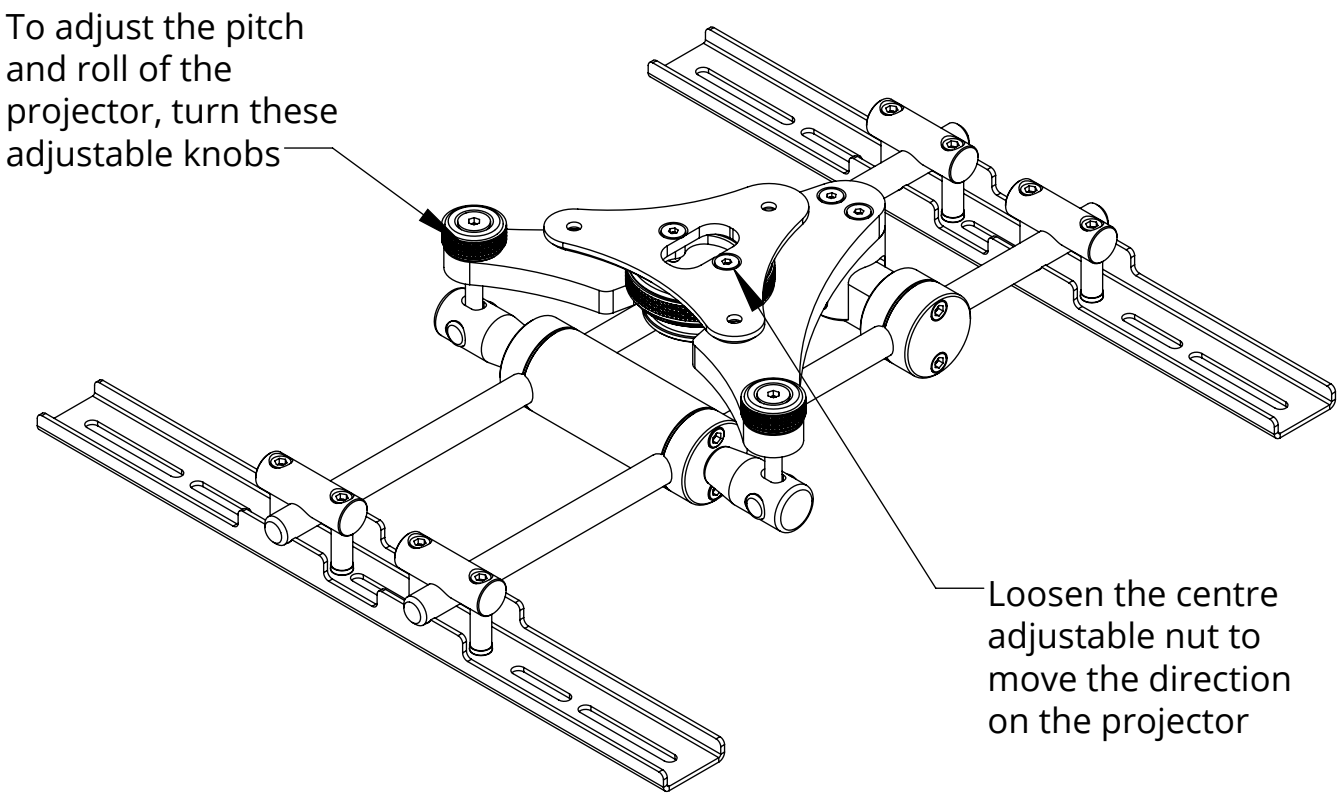
If a projector has an irregular mount pattern, custom adapter plates can be designed.



PM XL

PROJECTOR MOUNT SYSTEM XL

GENERAL DIMENSIONS



PM XL

PROJECTOR MOUNT SYSTEM XL



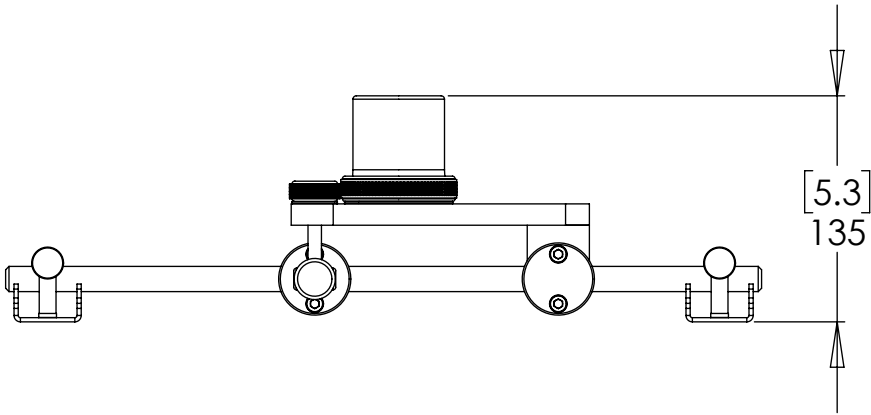
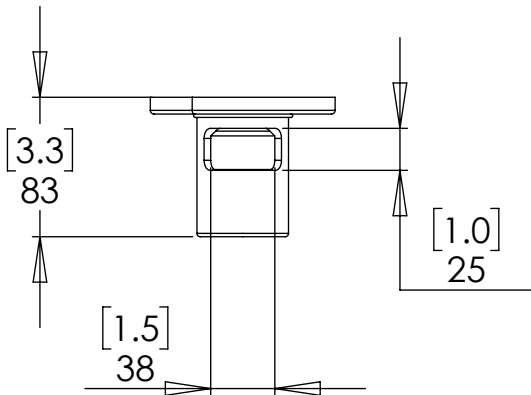
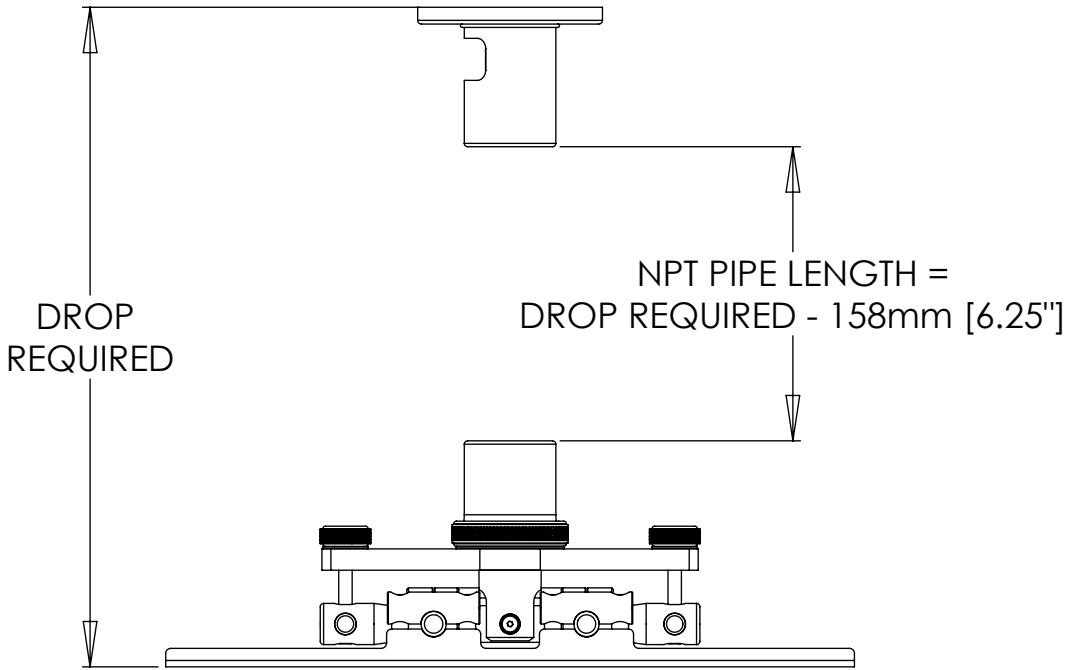
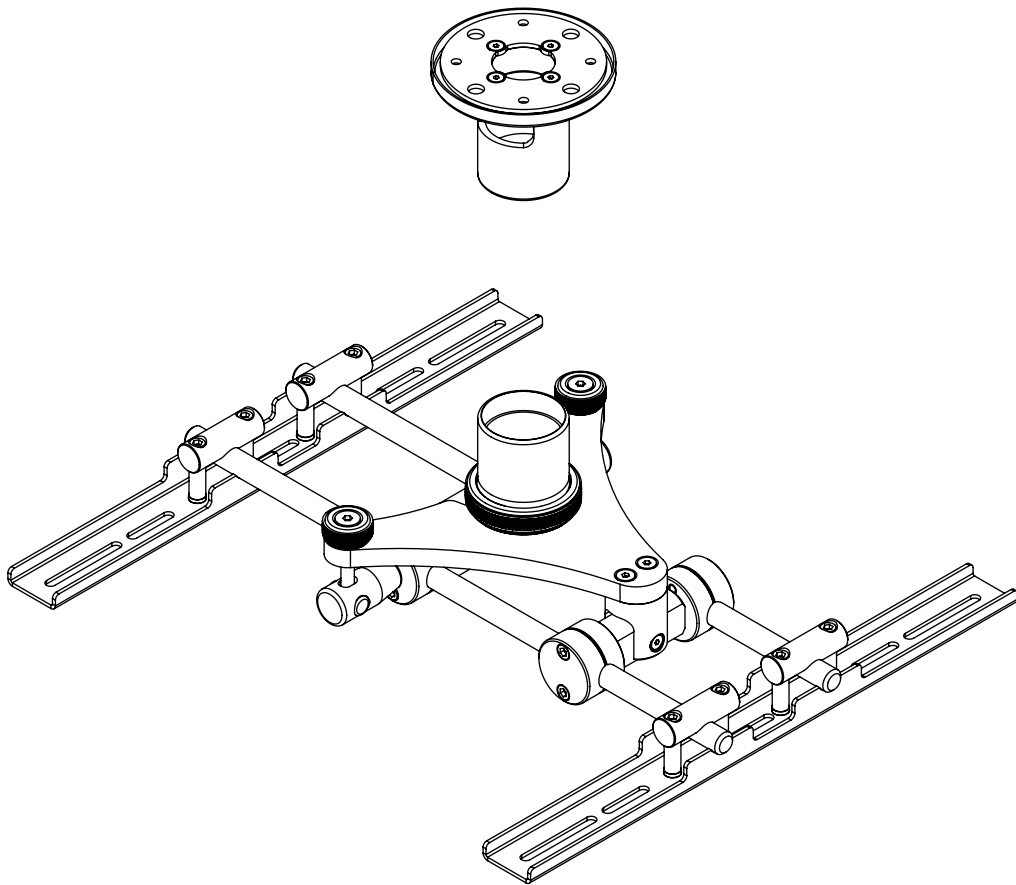
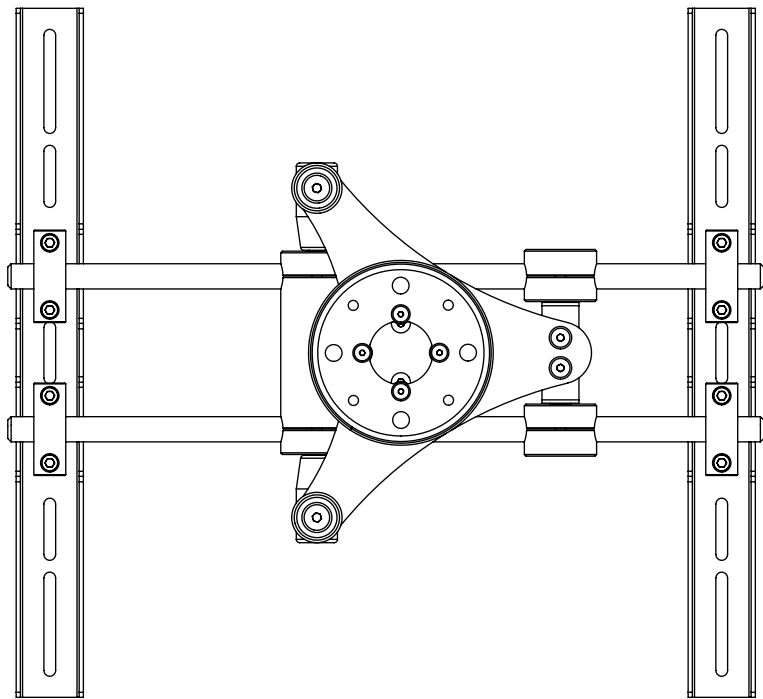
future automation

NPT DIMENSIONS

This mount set up allows for standard 1 1/2" NPT pipe to be used to allow the installer to make their own custom length pole.

The overall length of the pipe is just 6.25" [158mm] less than the overall drop required from ceiling to projector.

Couplings are machined aluminium finish.

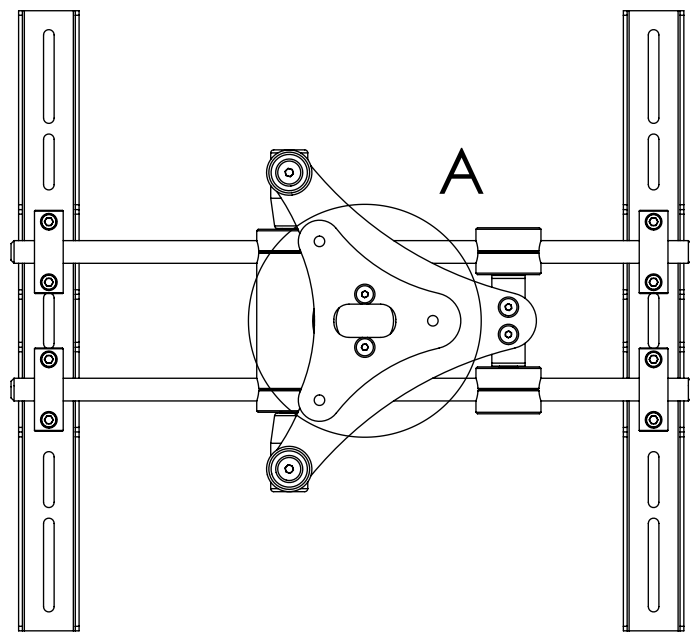


PM XL

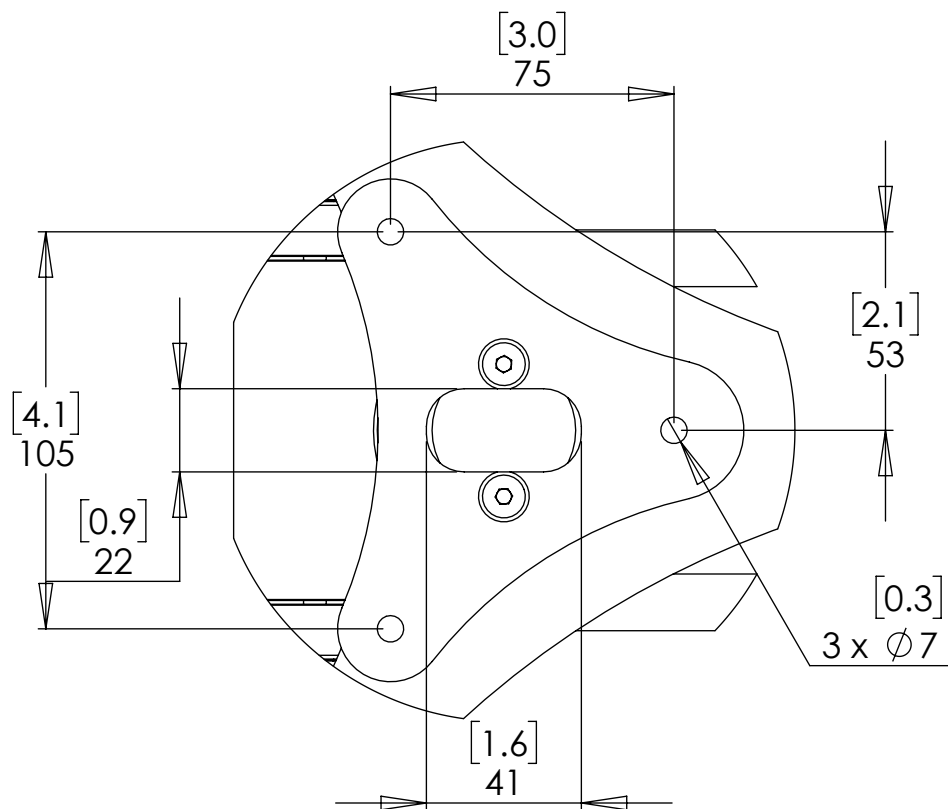
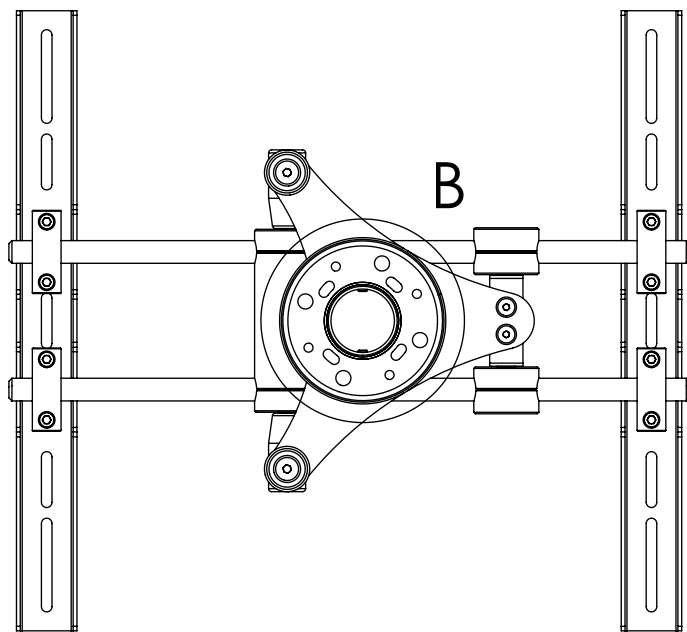
PROJECTOR MOUNT SYSTEM XL

MOUNTING DIMENSIONS

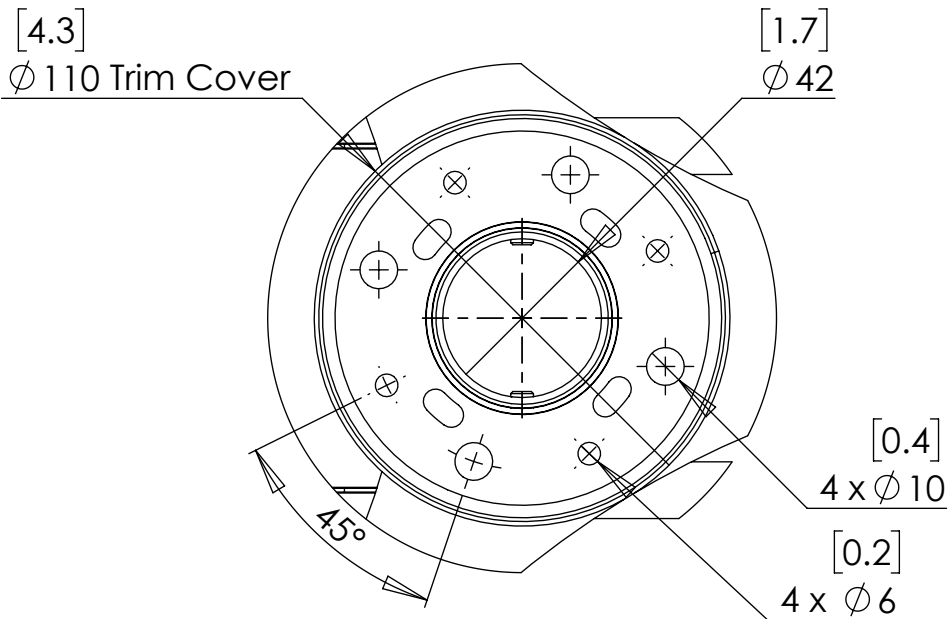
Surface Mount:



Pole Mount:



DETAIL A



DETAIL B