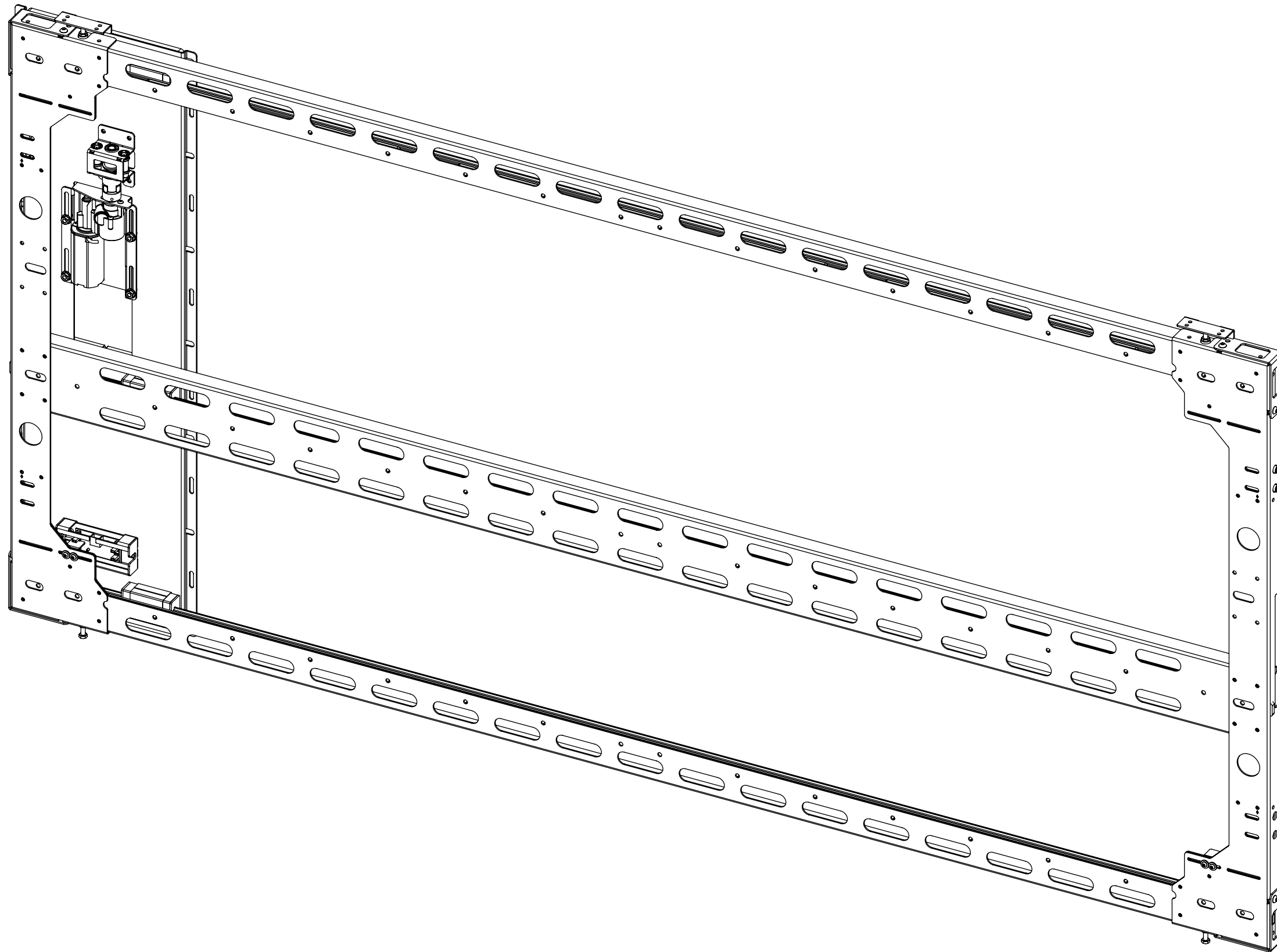


# PIC SD 3

## PICTURE SIDE MECHANISM



future automation



# PIC SD 3

## PICTURE SIDE MECHANISM

SPECIFICATION	MEASUREMENTS
Maximum Screen Size	65" (1651mm)
Maximum Weight Capacity	10Kg (22lb)
Maximum Speed	120mm/s
Maximum Travel	1690mm (66.5")
Depth From Wall	50mm (2.0")
Product Weight	43Kg (94.8lb)
Packaging Dimensions	212cm X 111cm X 30cm (83.4" x 43.7" x 11.8")
Shipping Weight	103Kg (227.1lb)
Movement Type	Motorised
Power Supply Required	110V - 240V AC
Power Consumption Max.	110W
Power Consumption Standby	3W
Control Options	IR Remote, RS232, Contact Closure
Product Options / Features	Custom RAL paint finishes
Package Contents	Mechanism, IR remote control
Marine Suitable	No

# PIC SD 3

## PICTURE SIDE MECHANISM

### RECESS DETAILS

#### CABLES:

During installation, cables between the two mechanisms shall be required to run to a suitable storage location; connecting to the control box (207[8.2] x 150[5.9] x 52[2.1]).

A nominal  $\varnothing 40\text{mm}$ [1.6] cable entry/exit hole is recommended to provide suitable access for cable routing.

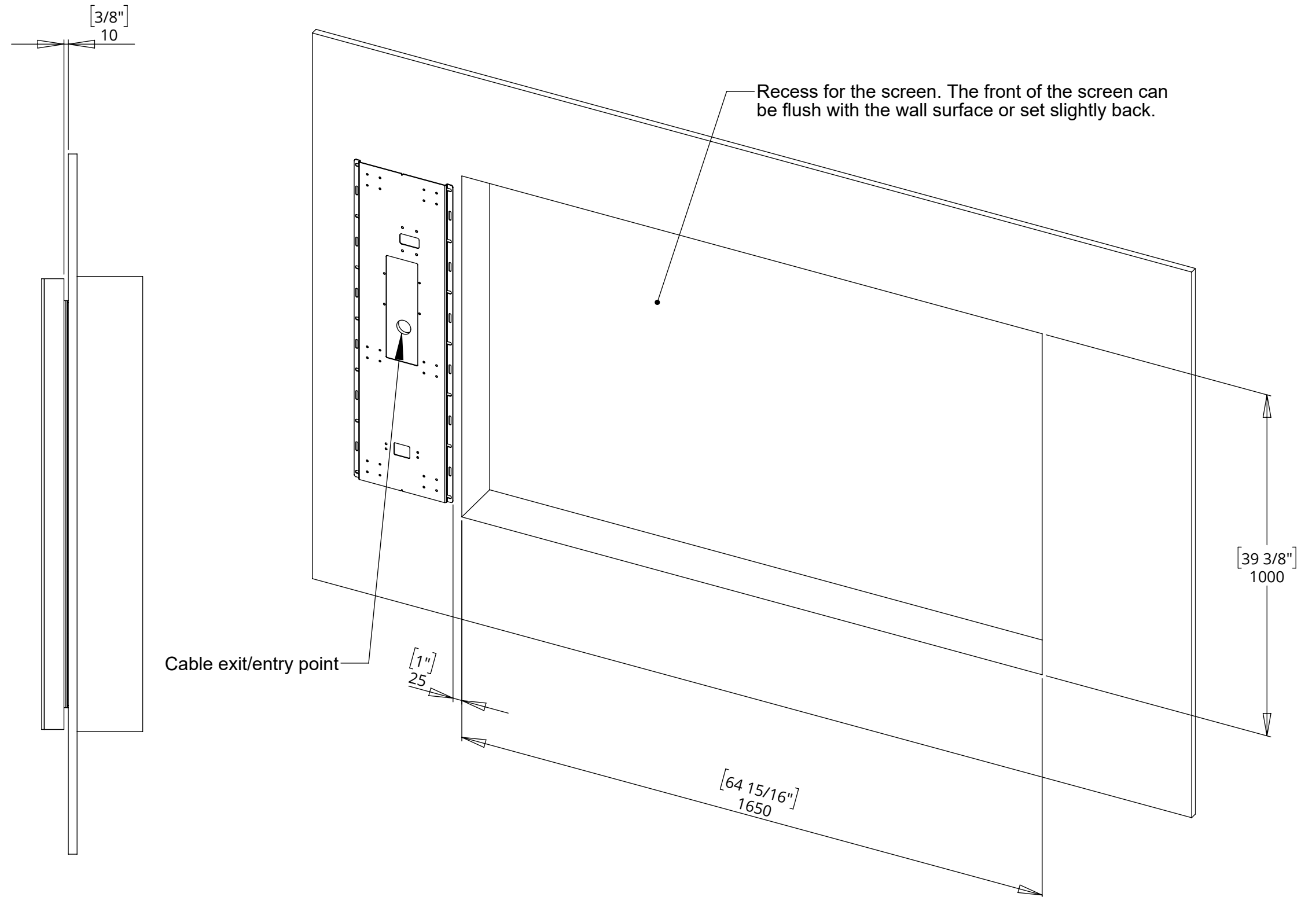
The control box shall need to be connected into a mains (13A) plug socket. An infrared receiver on a 1.5m[59.1] lead is also plugged into the control box.

#### PANELS:

The moving panels shall be 10mm[0.4] proud of the wall surface.

#### NOTE:

1650mm[65] is the widest recess this version of the mechanism can cover. This dimension can be reduced for small recesses but **not** increased.



# PIC SD 3

## PICTURE SIDE MECHANISM

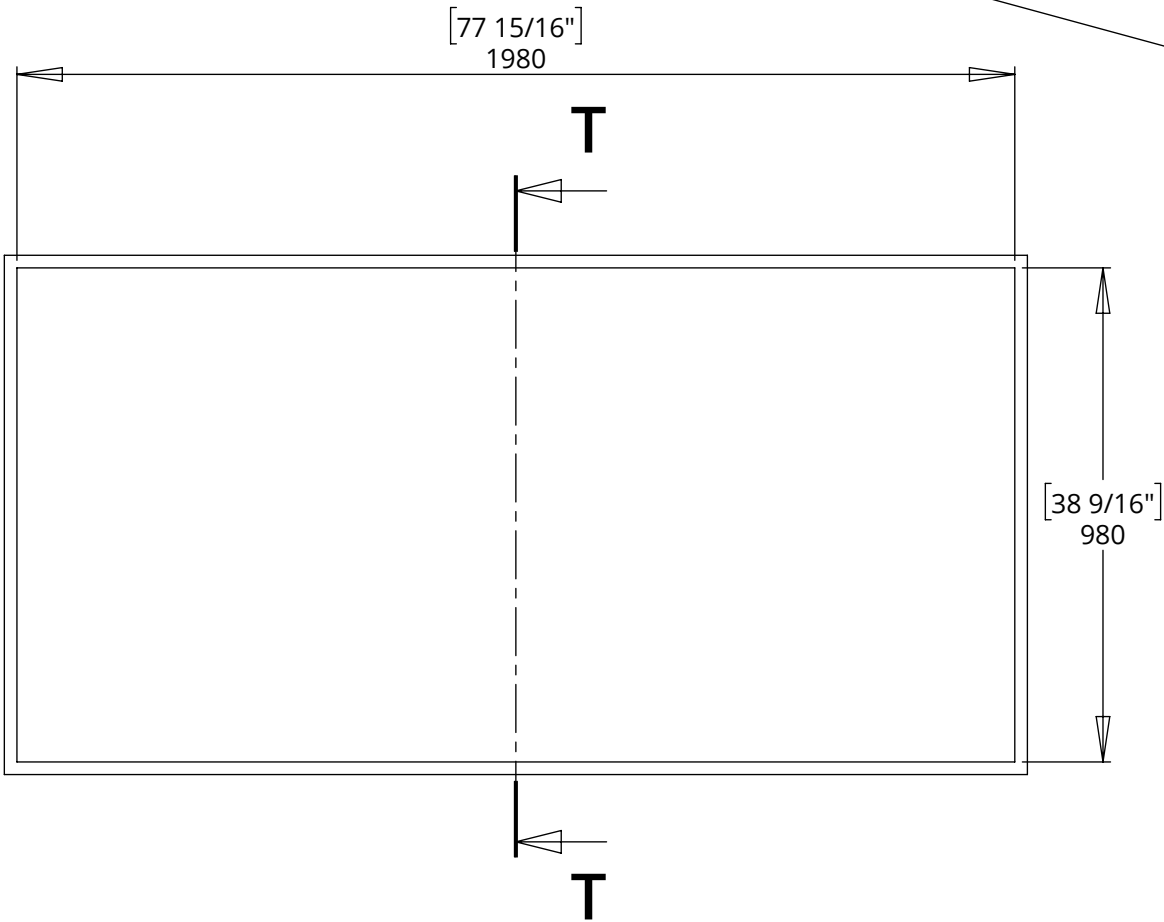
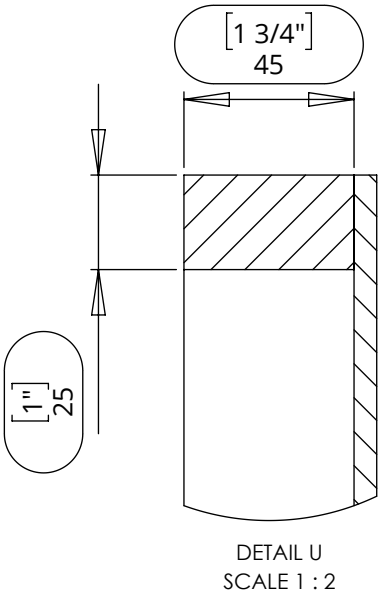


future automation

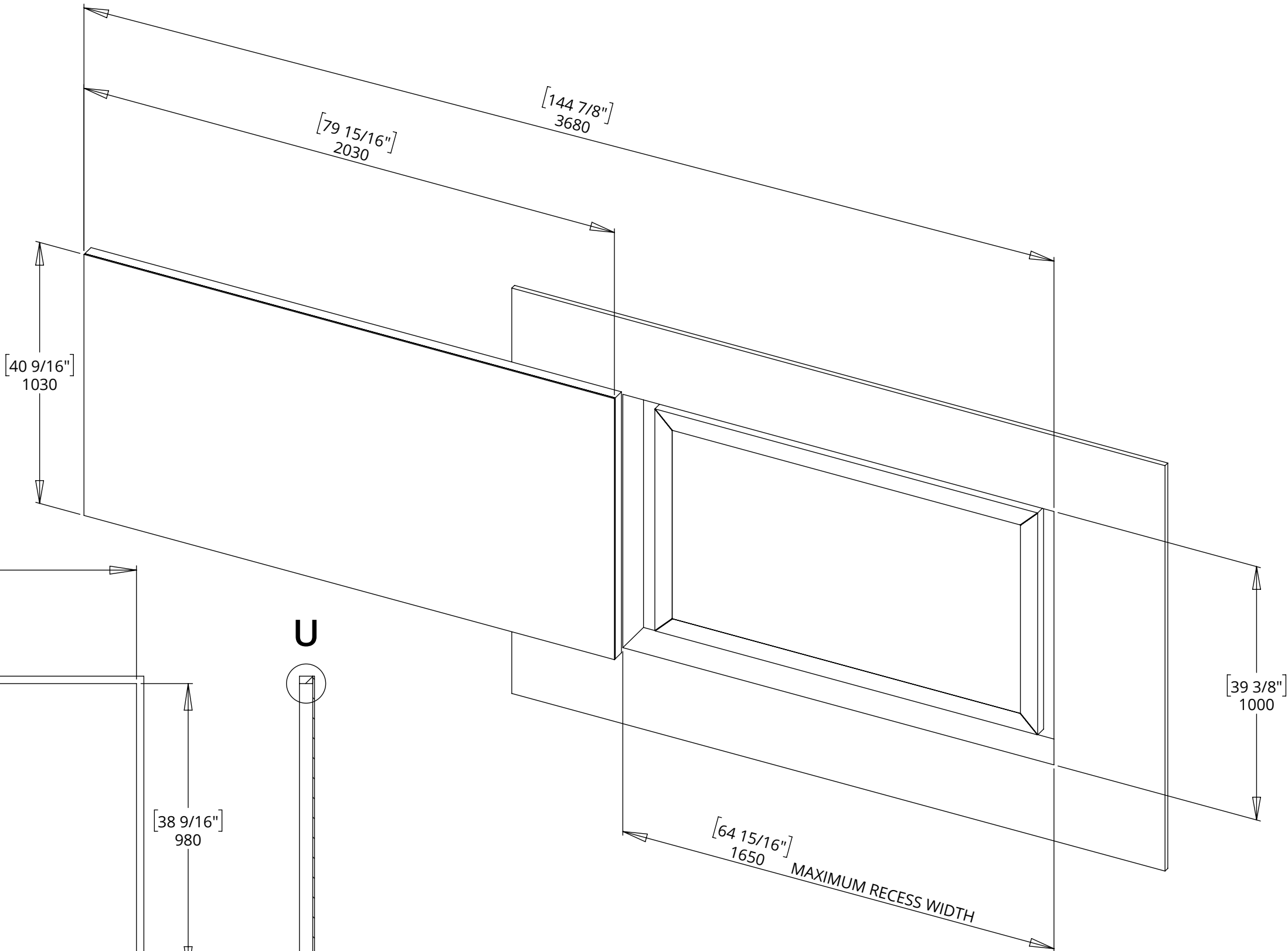
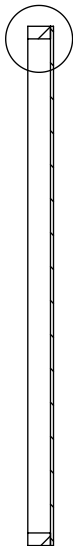
### PANEL DETAILS

These are suggested dimensions for the panels.

The panels must have an **internal depth of 45mm** to conceal the mechanism; as shown in DETAIL U.



U



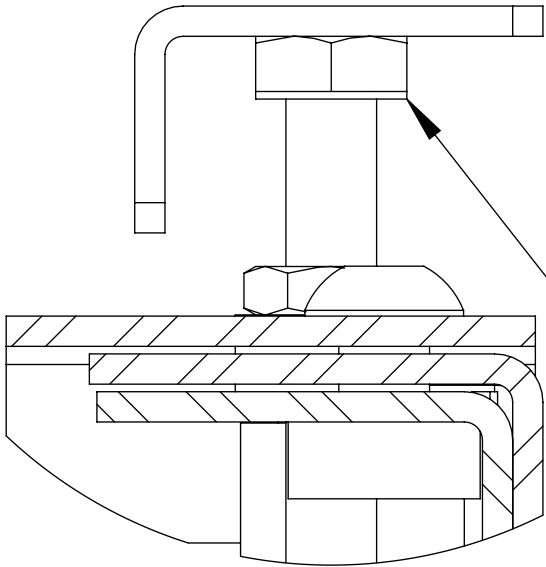
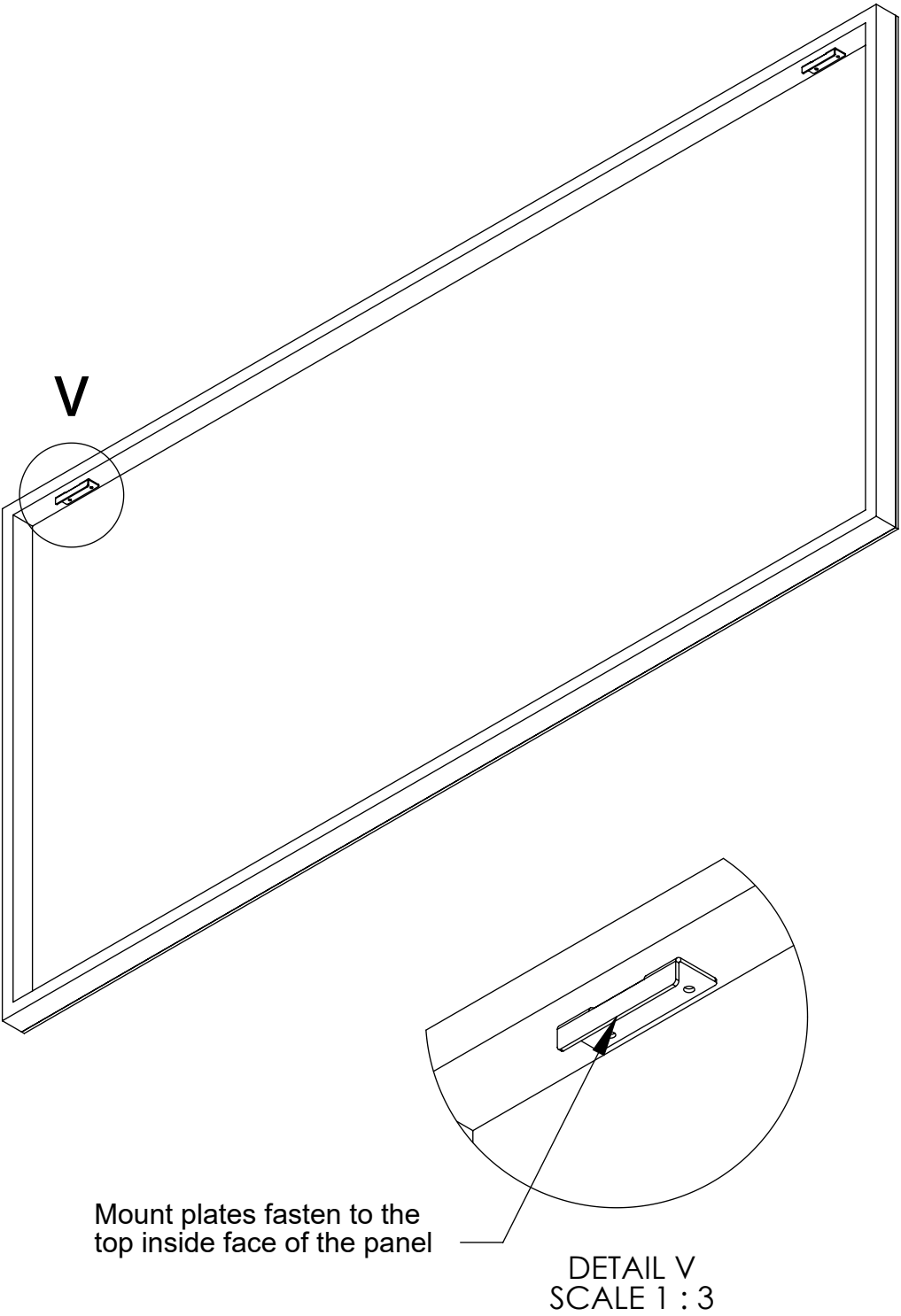
# PIC SD 3

## PICTURE SIDE MECHANISM

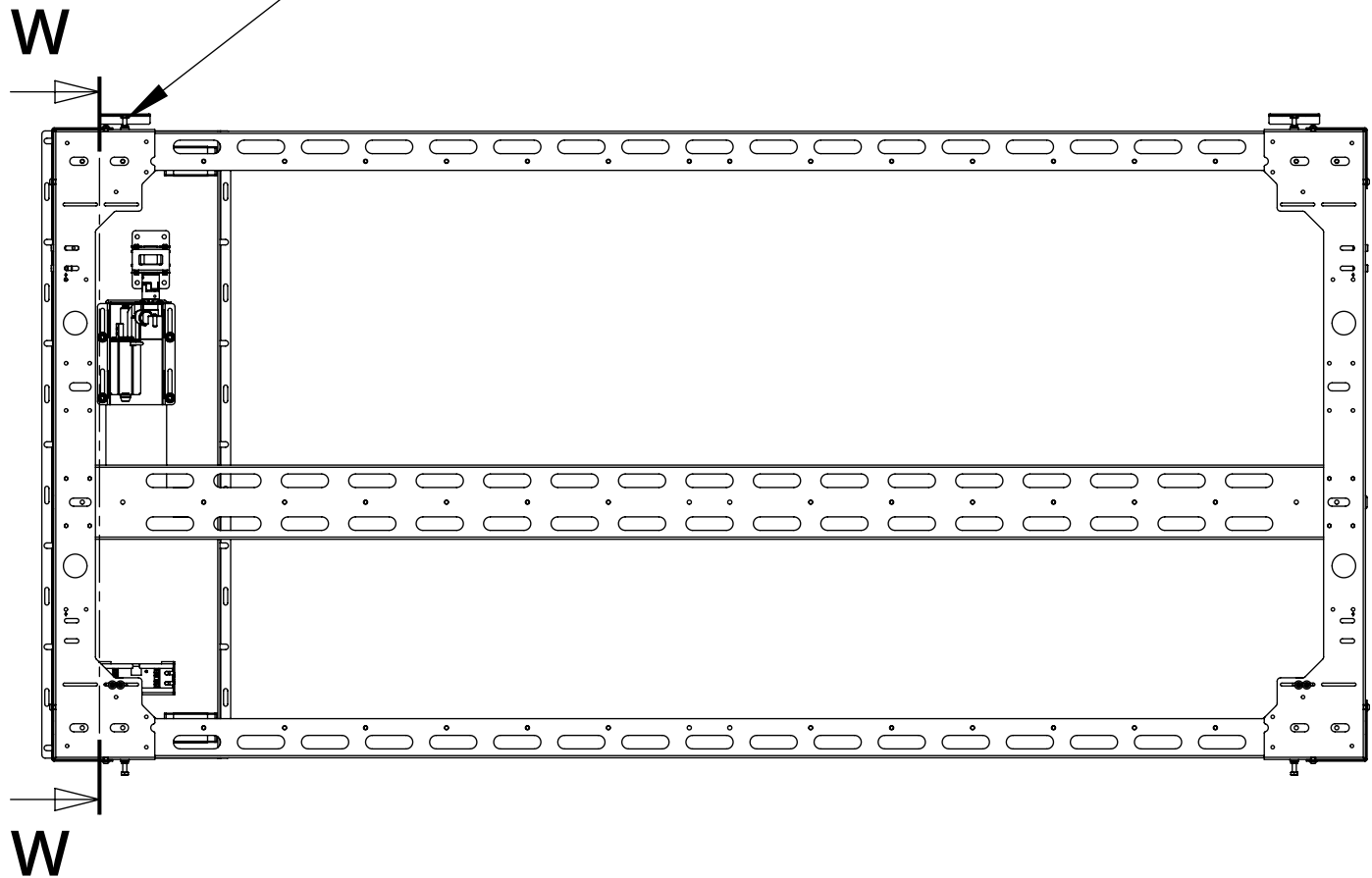
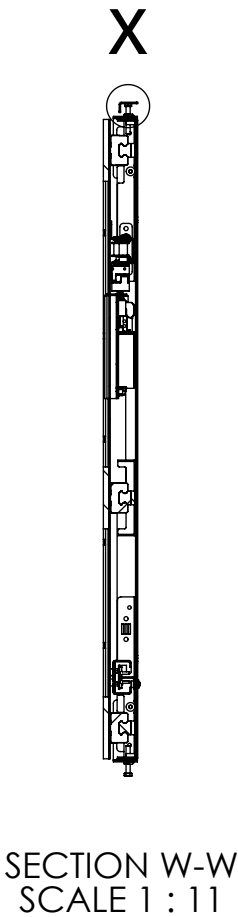


future automation

### PANEL MOUNTING DETAILS



Panel mount plates hook onto two bolts. The height of the bolts can be adjusted to ensure the panels are level.



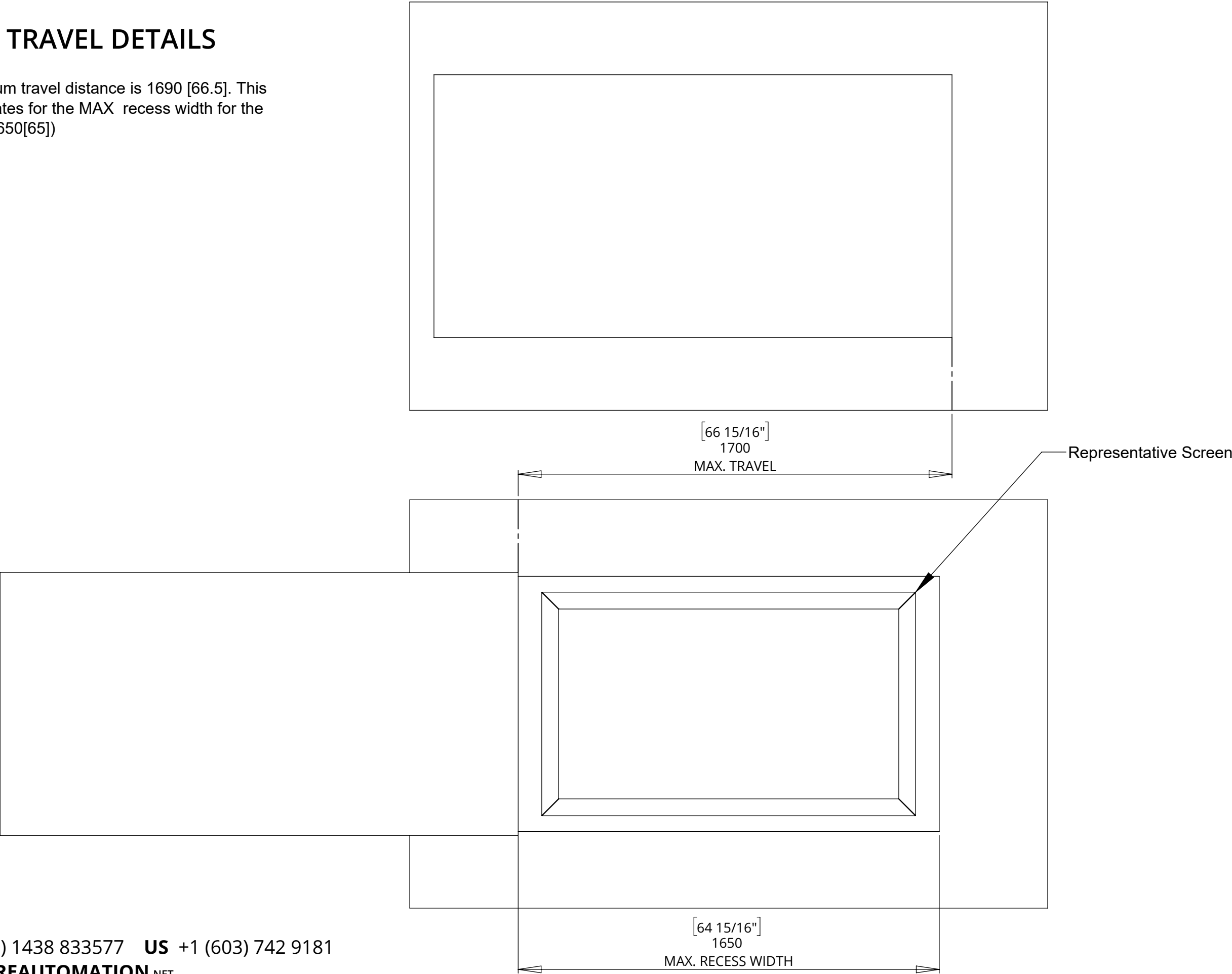
# PIC SD 3

## PICTURE SIDE MECHANISM



### PANEL TRAVEL DETAILS

The maximum travel distance is 1690 [66.5]. This accommodates for the MAX recess width for the PIC SD 3(1650[65])

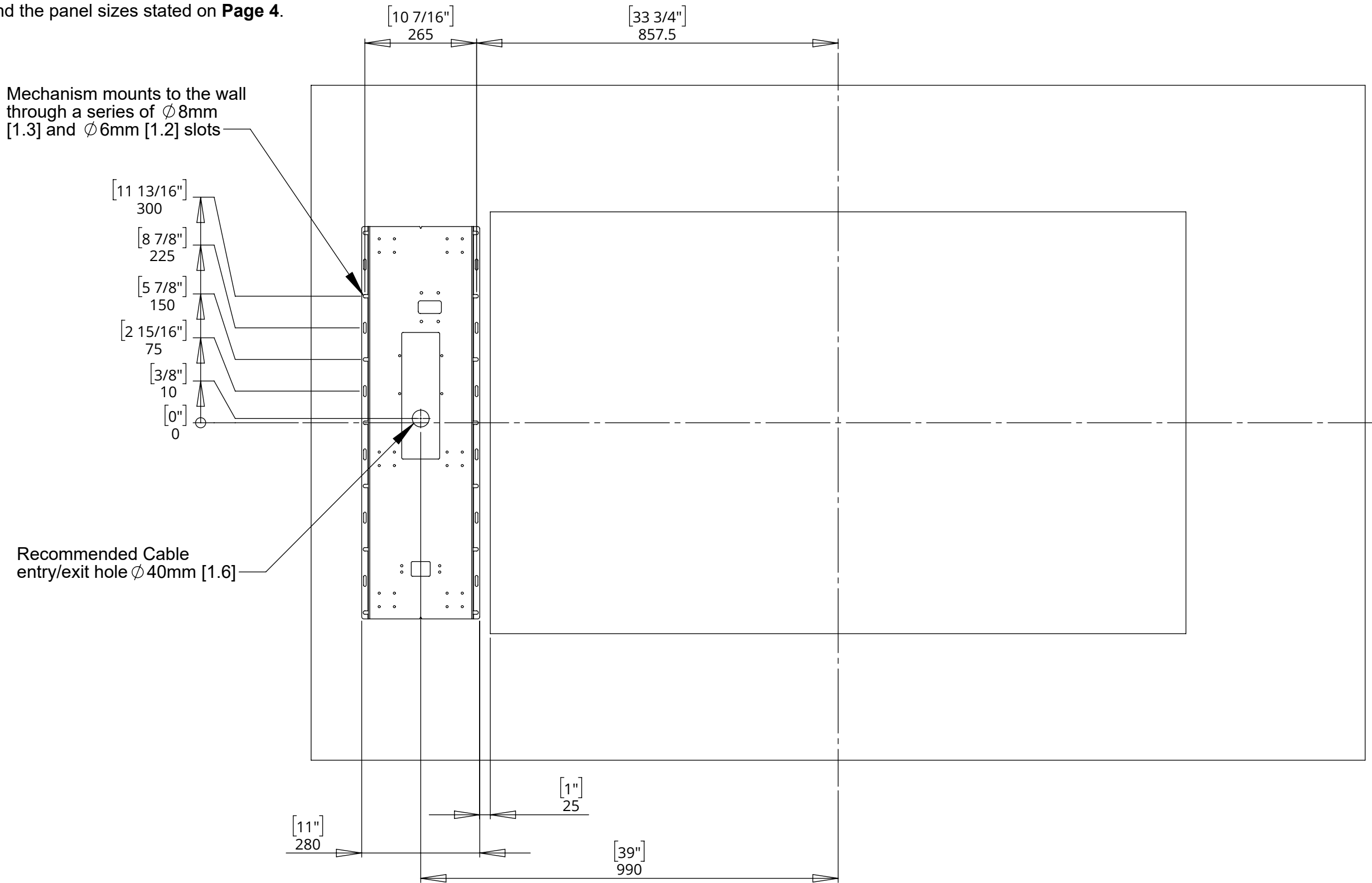


# PIC SD 3

## PICTURE SIDE MECHANISM

### MOUNTING DETAILS

These are suggested dimensions for positioning the mechanisms on the wall. The dimensions are based around the panel sizes stated on **Page 4**.



# PIC SD 3

## PICTURE SIDE MECHANISM

### CONTROL BOX DETAILS

- Power Supply Unit (PSU) will allow 110V or 240V AC input. The same PSU is used for EU or US mains supplies.
- Other than control cables, all cables terminate at the control board via standard phoenix connectors.
- Cable loom length supplied at approx. 4m [158"]. Loom can be extended to a maximum of approx. 10m [400"].
- Minimum cable bend radius 25mm [1"].

