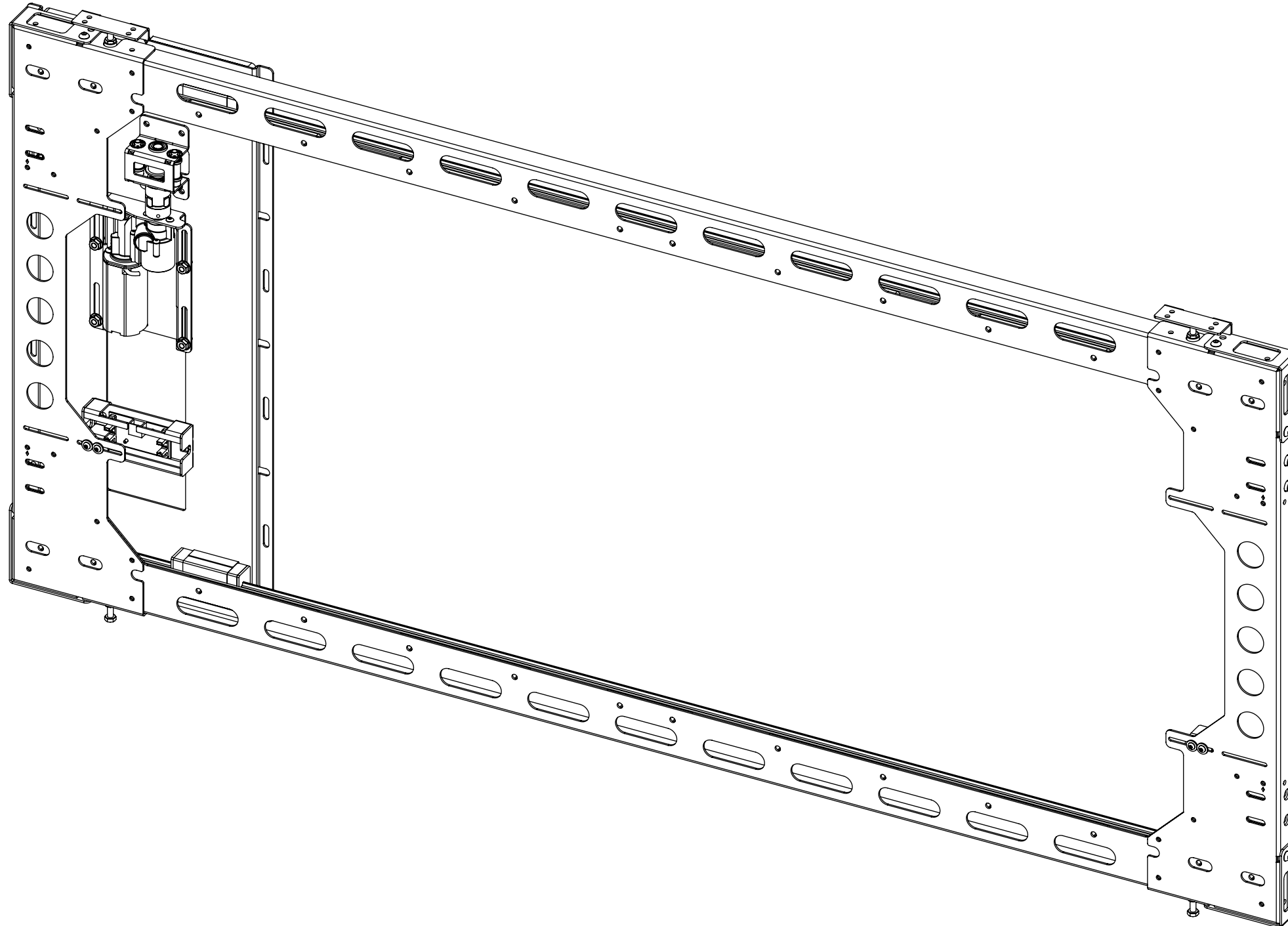


PIC SD 1

PICTURE SIDE MECHANISM



PIC SD 1

PICTURE SIDE MECHANISM

SPECIFICATION	MEASUREMENTS
Maximum Screen Size	42" (1067mm)
Maximum Weight Capacity	10Kg (22lb)
Maximum Speed	120mm/s
Maximum Travel	1184mm (46.6")
Depth From Wall	50mm (2.0")
Product Weight	24Kg (53lb)
Packaging Dimensions	164cm X 81cm X 20cm (64.56" x 31.88" x 7.87")
Shipping Weight	33Kg (73lb)
Movement Type	Motorised
Power Supply Required	110V - 240V AC
Power Consumption Max.	110W
Power Consumption Standby	3W
Control Options	IR Remote, RS232, Contact Closure
Product Options / Features	Custom RAL paint finishes
Package Contents	Mechanism, IR remote control
Marine Suitable	No

PIC SD 1

PICTURE SIDE MECHANISM

RECESS DETAILS

CABLES:

During installation, cables between the two mechanisms shall be required to run to a suitable storage location; connecting to the control box (207[8.2] x 150[5.9] x 52[2.1]).

A nominal $\varnothing 40\text{mm}$ [1.6] cable entry/exit hole is recommended to provide suitable access for cable routing.

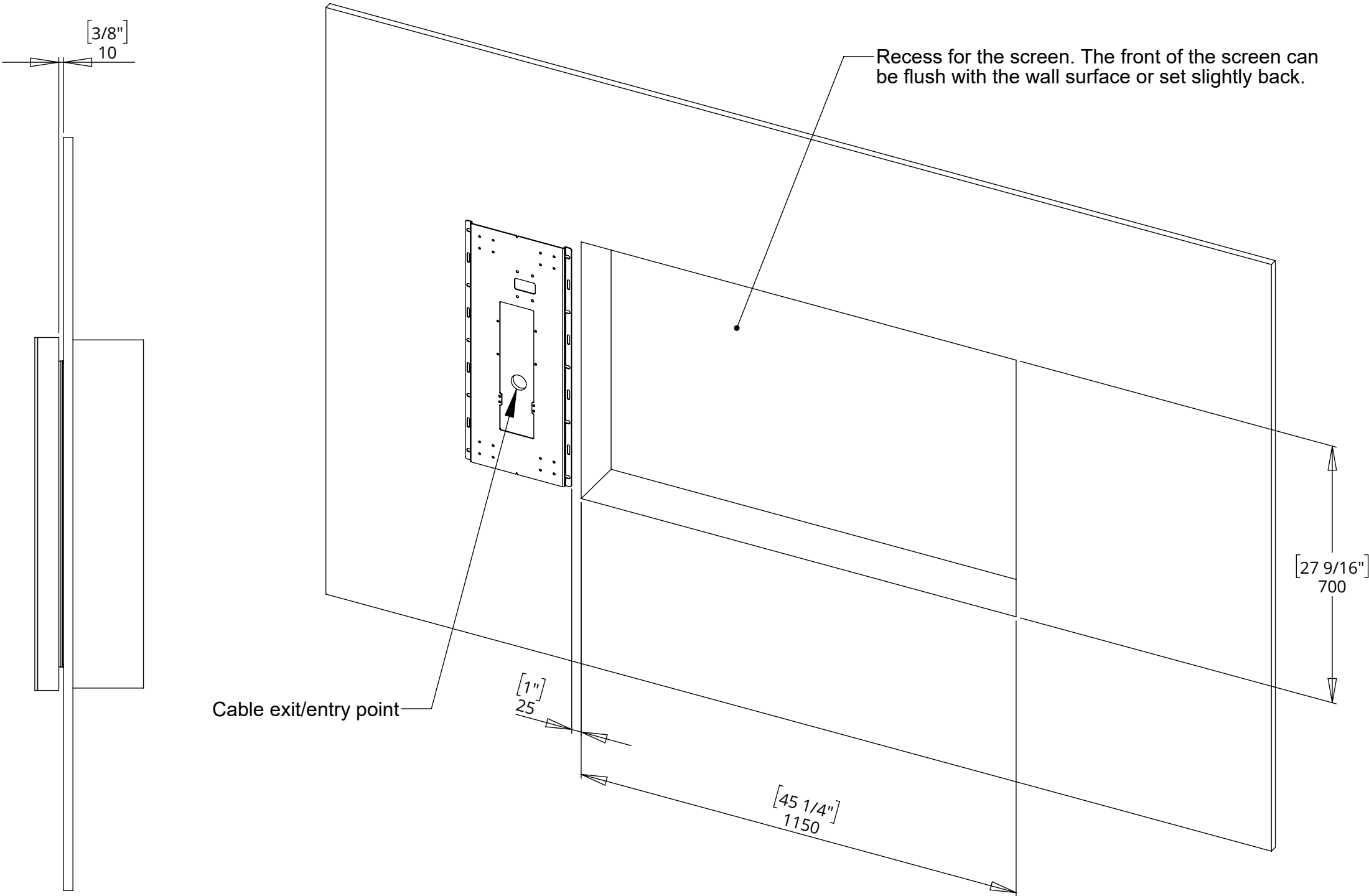
The control box shall need to be connected into a mains (13A) plug socket. An infrared receiver on a 1.5m[59.1] lead is also plugged into the control box.

PANELS:

The moving panels shall be 10mm[0.4] proud of the wall surface.

NOTE:

1150mm[45.3] is the widest recess this version of the mechanism can cover. This dimension can be reduced for small recesses but **not** increased.



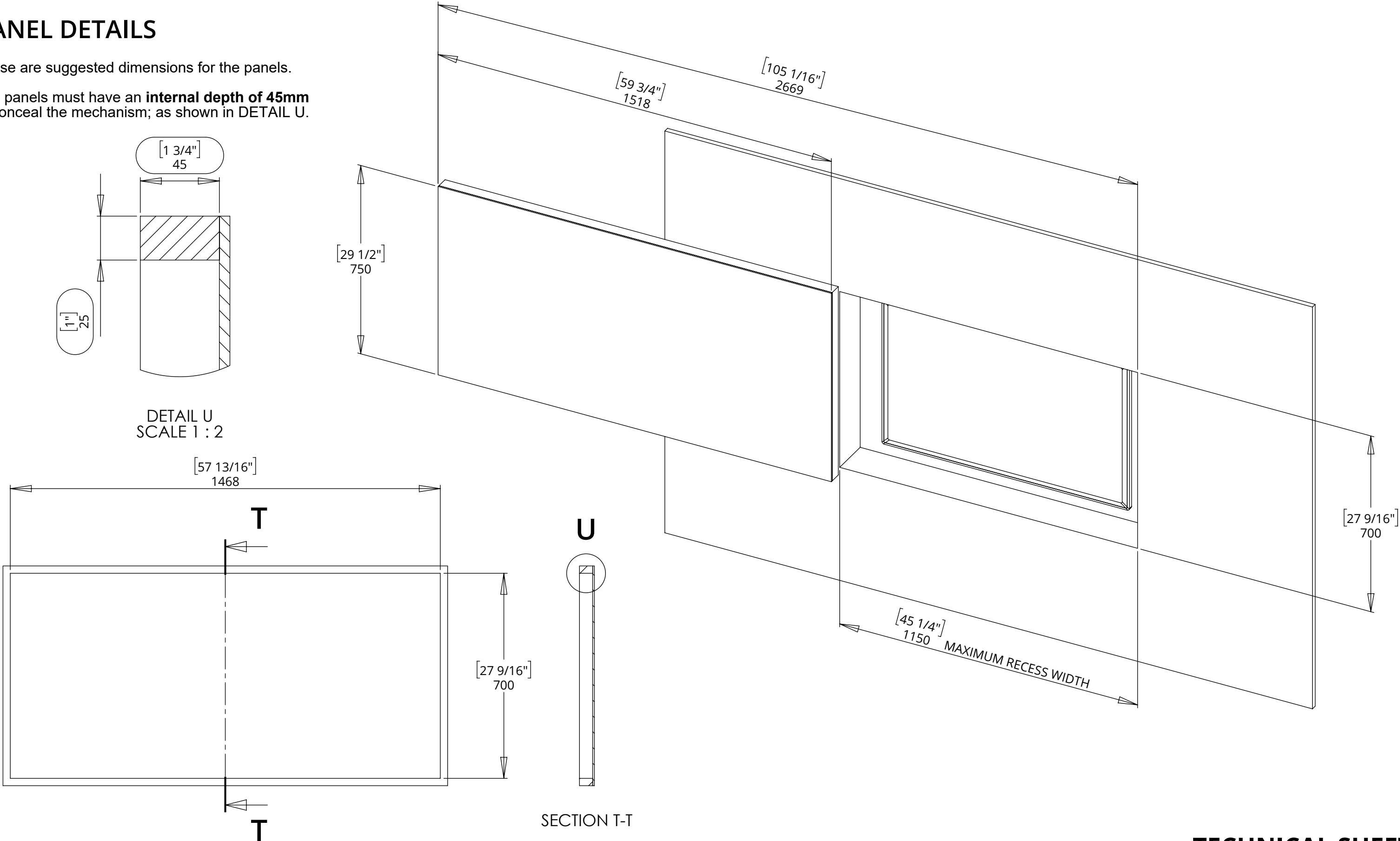
PIC SD 1

PICTURE SIDE MECHANISM

PANEL DETAILS

These are suggested dimensions for the panels.

The panels must have an **internal depth of 45mm** to conceal the mechanism; as shown in DETAIL U.



DETAIL U
SCALE 1 : 2

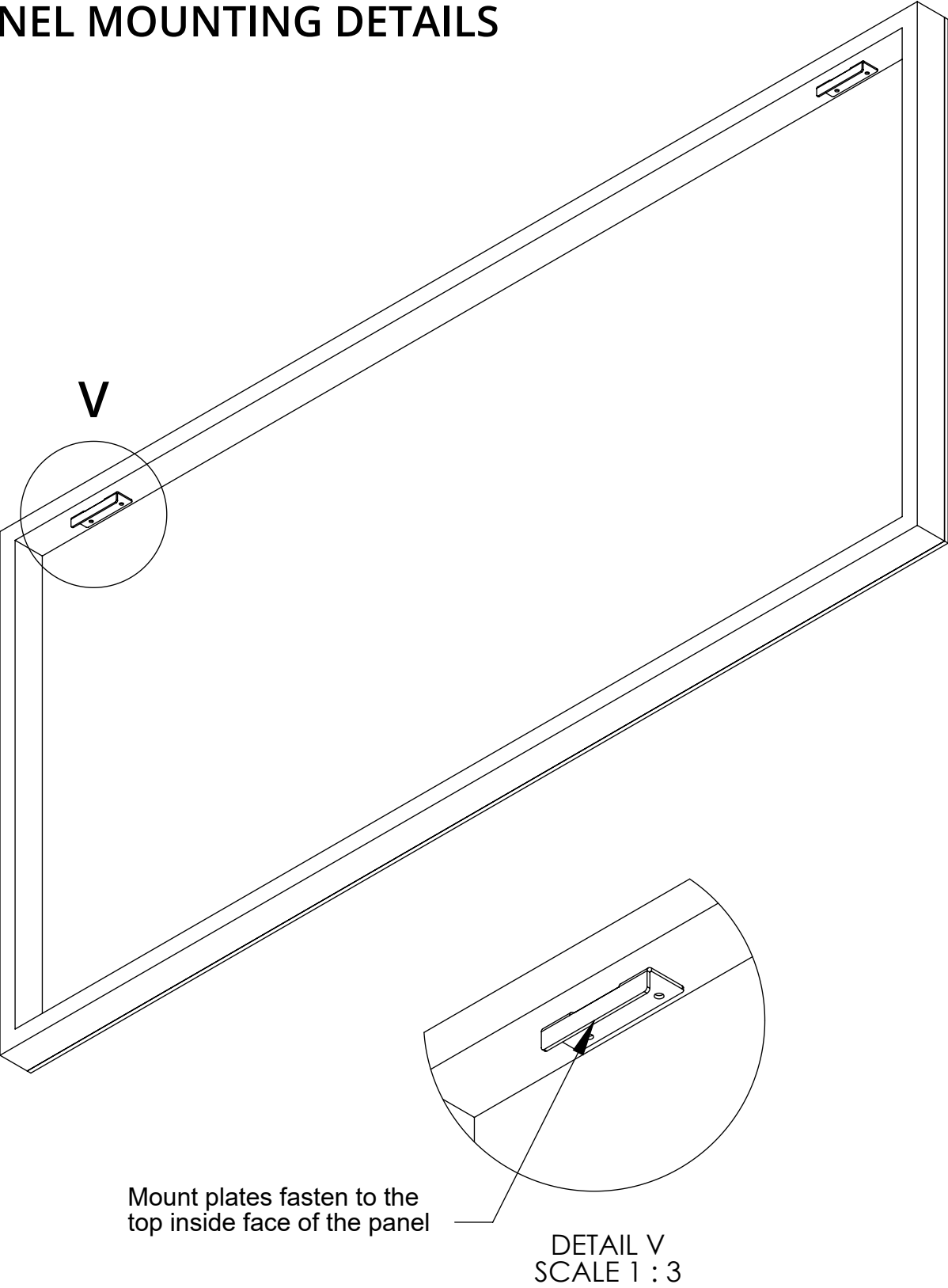
PIC SD 1

PICTURE SIDE MECHANISM



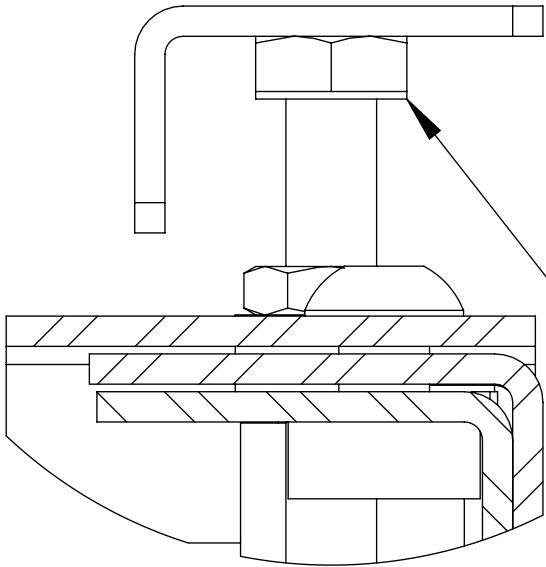
future automation

PANEL MOUNTING DETAILS



Mount plates fasten to the top inside face of the panel

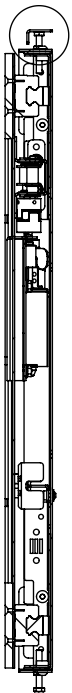
DETAIL V
SCALE 1 : 3



DETAIL X
SCALE 2 : 1

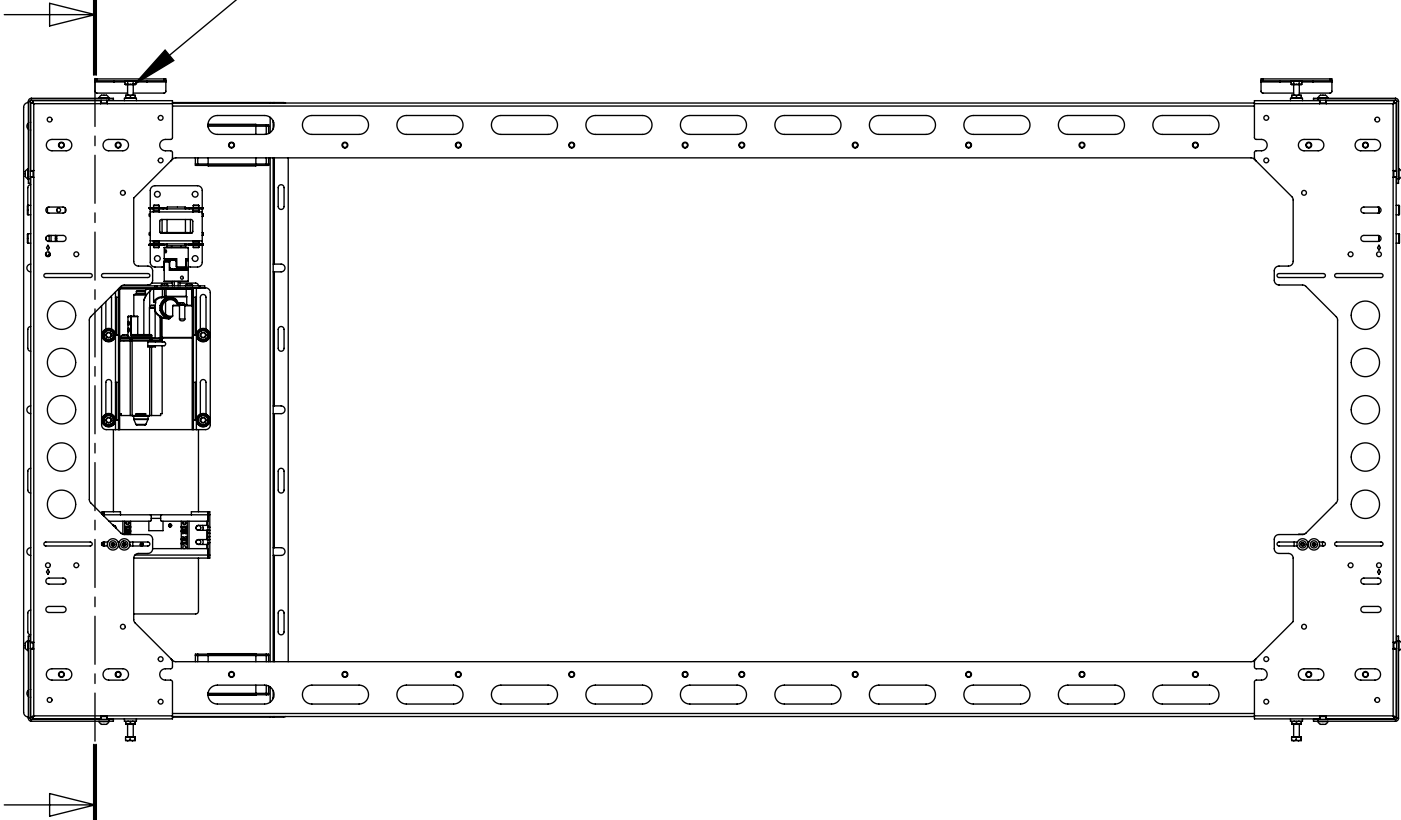
Panel mount plates hook onto two bolts. The height of the bolts can be adjusted to ensure the panels are level.

X



SECTION W-W
SCALE 1 : 8

W



W

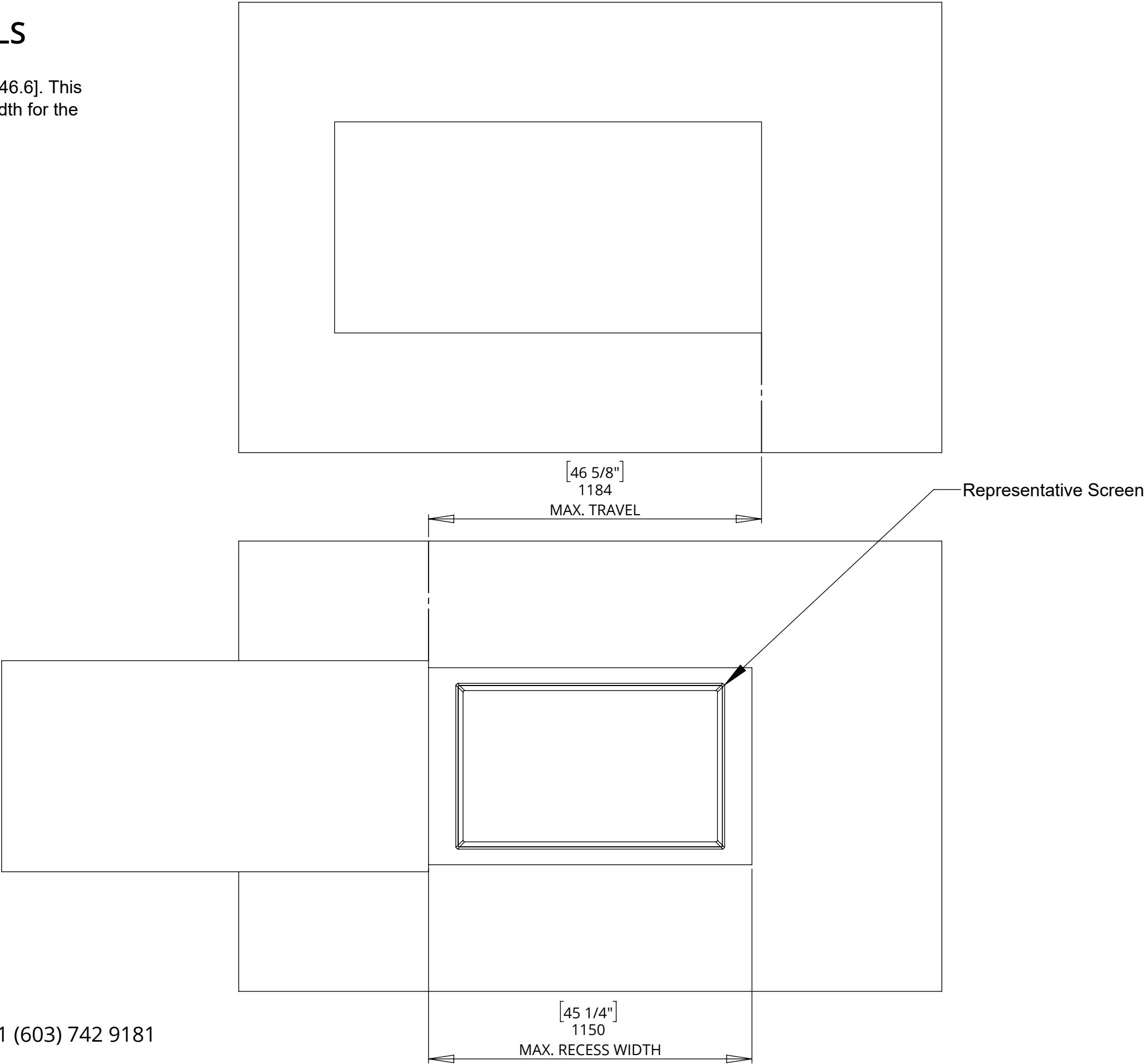
PIC SD 1

PICTURE SIDE MECHANISM



PANEL TRAVEL DETAILS

The maximum travel distance is 1184 [46.6]. This accommodates for the MAX recess width for the PIC SD 1(1150[45.3])



PIC SD 1

PICTURE SIDE MECHANISM

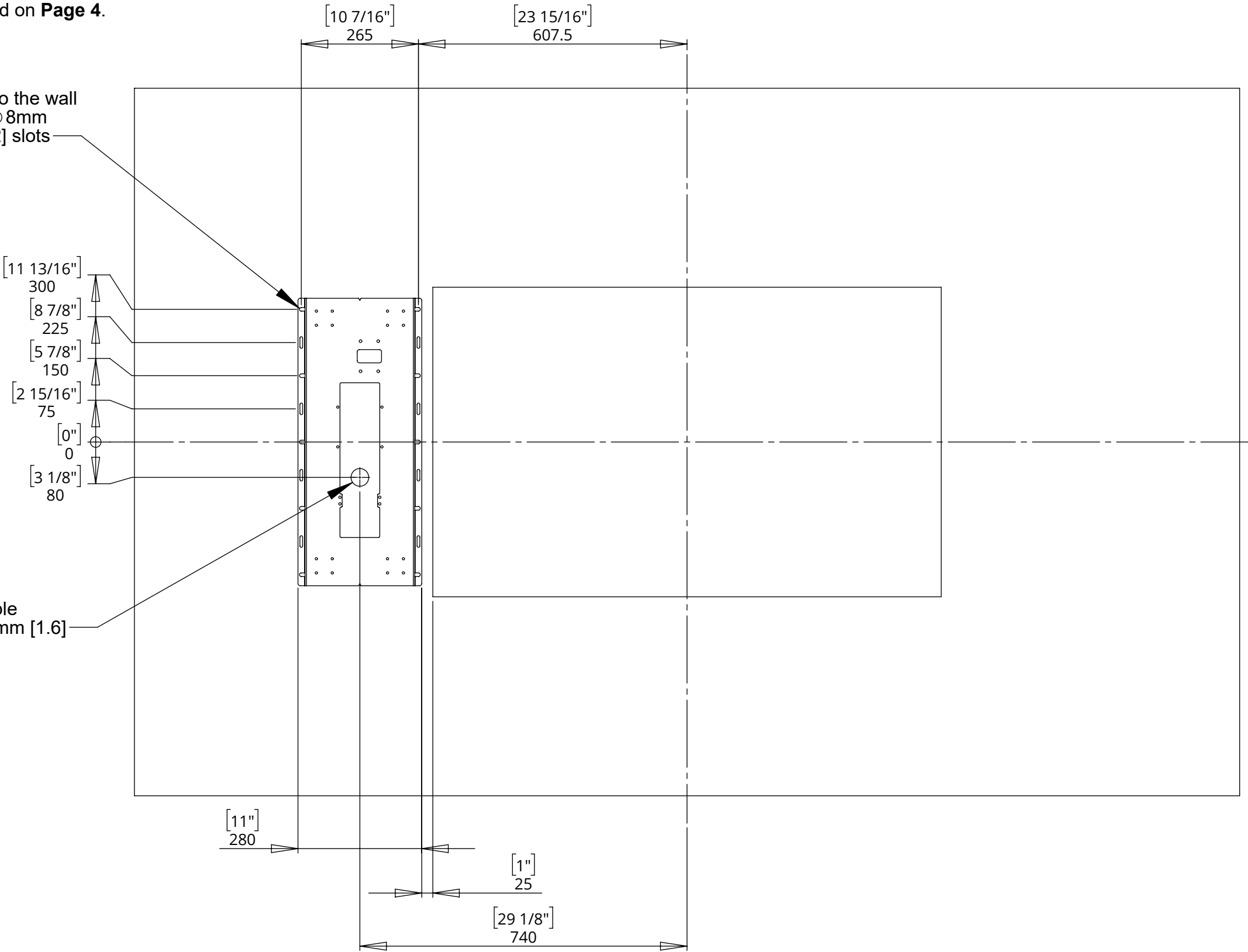


future automation

MOUNTING DETAILS

These are suggested dimensions for positioning the mechanisms on the wall. The dimensions are based around the panel sizes stated on **Page 4**.

Mechanism mounts to the wall through a series of $\phi 8\text{mm}$ [1.3] and $\phi 6\text{mm}$ [1.2] slots



PIC SD 1

PICTURE SIDE MECHANISM

CONTROL BOX DETAILS

- Power Supply Unit (PSU) will allow 110V or 240V AC input. The same PSU is used for EU or US mains supplies.
- Other than control cables, all cables terminate at the control board via standard phoenix connectors.
- Cable loom length supplied at approx. 4m [158"]. Loom can be extended to a maximum of approx. 10m [400"].
- Minimum cable bend radius 25mm [1"].

