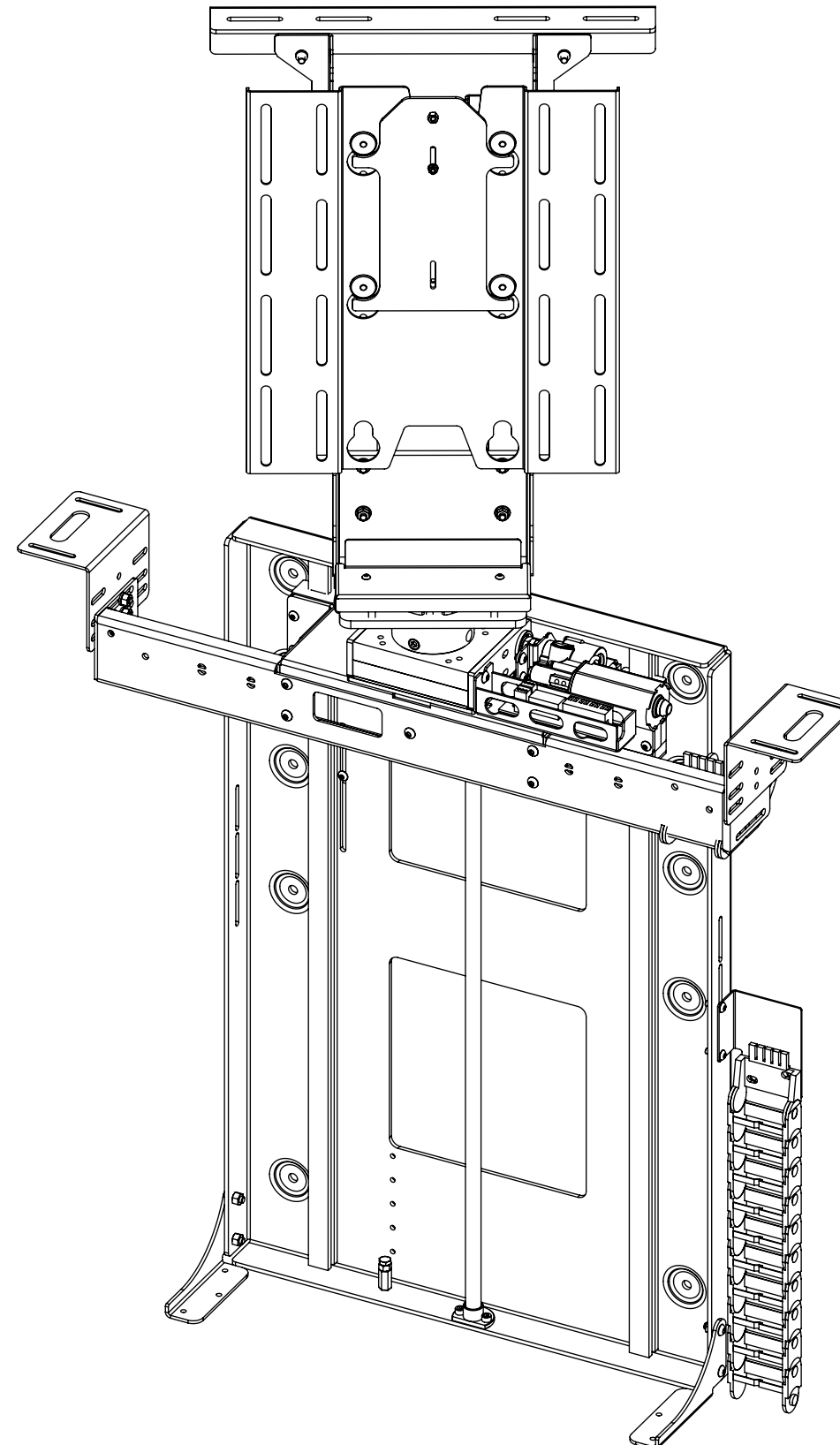


# LSM-S-BE-3

## LIFT SYSTEM SWIVEL FOR BOX ENCLOSURE



future automation



# LSM-S-BE-3

## LIFT SYSTEM SWIVEL FOR BOX ENCLOSURE



future automation

SPECIFICATION	MEASUREMENTS
Maximum Screen Height	555mm (21 7/8")
Maximum Rotation	180 ° in each direction
Maximum Lifting Capacity	50Kg (110lb)
Maximum Lifting Capacity (Marine)	30Kg (66lb)
Internal Cabinet Height	769mm (30 1/4")
Decibel Rating	57 dB
Packaging Dimensions	970 x 850 x 330mm (38 3/16 x 33 7/16 x 13")
Shipping Weight	39Kg (85.8lb)
Movement Type	Motorised
Power Supply Required	110V - 240V AC
Power Consumption	250 - 500W
Power Consumption Standby	3W
Mounting Patterns Supported	VESA 400, 300, 200 W x 400, 300, 200 H
Control Options	IR Remote, RS232, Contact Closure, RF Available
Product Options / Features	Specific B&O and Loewe mounts / adapters, Custom RAL paint finishes
Package Contents	Mechanism, IR remote control
Marine Suitable	Yes

# LSM-S-BE-3

## LIFT SYSTEM SWIVEL FOR BOX ENCLOSURE



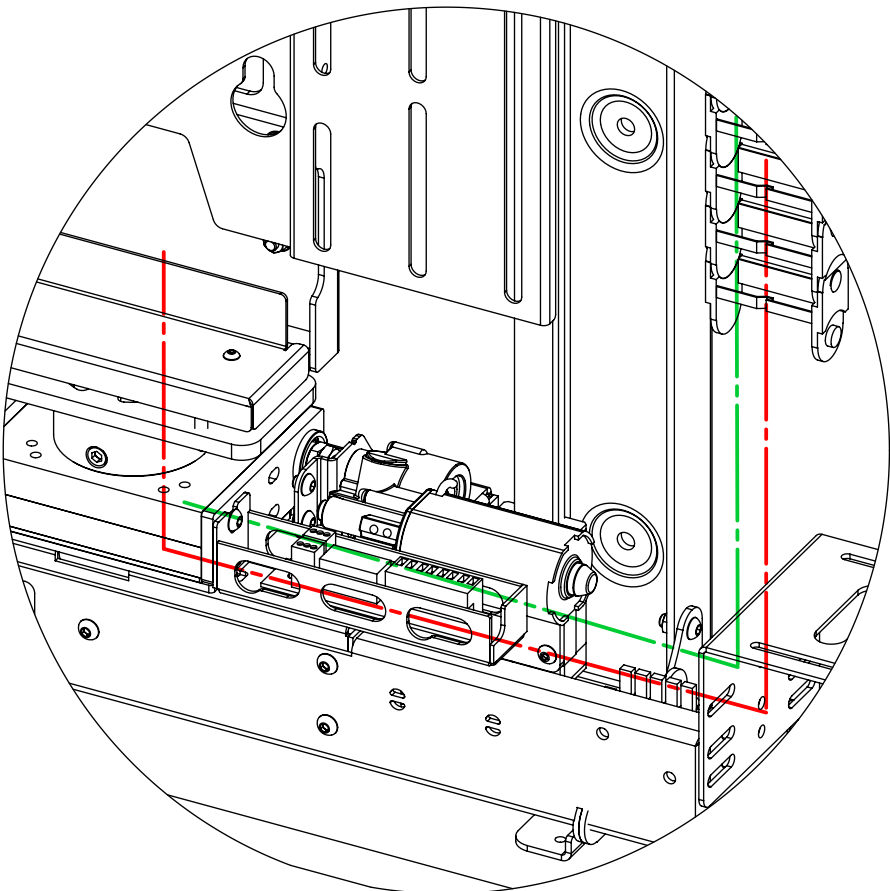
future automation

### CABLE ROUTING

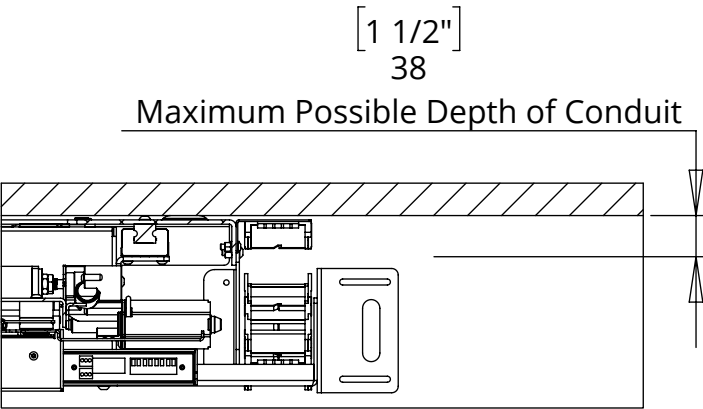
The LSM has an easily removable Mount Cover that cables from the screen can be routed underneath. Cables then travel through the centre of the Mount Boss and into the beam. Cables must be routed carefully to prevent any interference with the LSM beam as it operates.

Screen and Mechanism cables should be routed to a control box outside of the cabinet via an opening in the back of the cabinet or a conduit leading to the bottom.

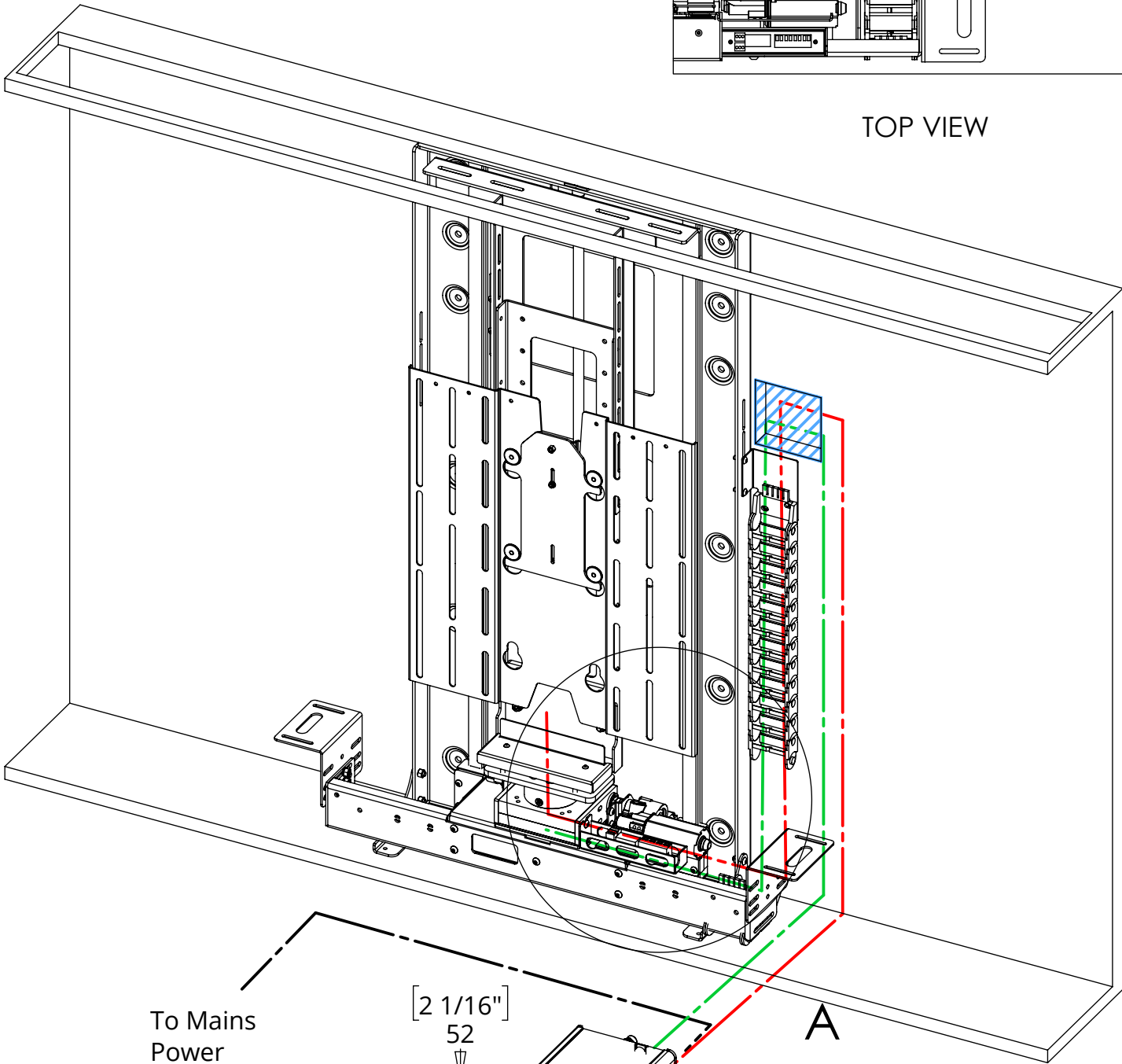
- SCREEN CABLES
- MECHANISM CABLES
- POWER CABLE



DETAIL A



TOP VIEW



To Mains Power

[2 1/16"]  
52

A

[8 1/8"]  
207

[5 7/8"]  
150

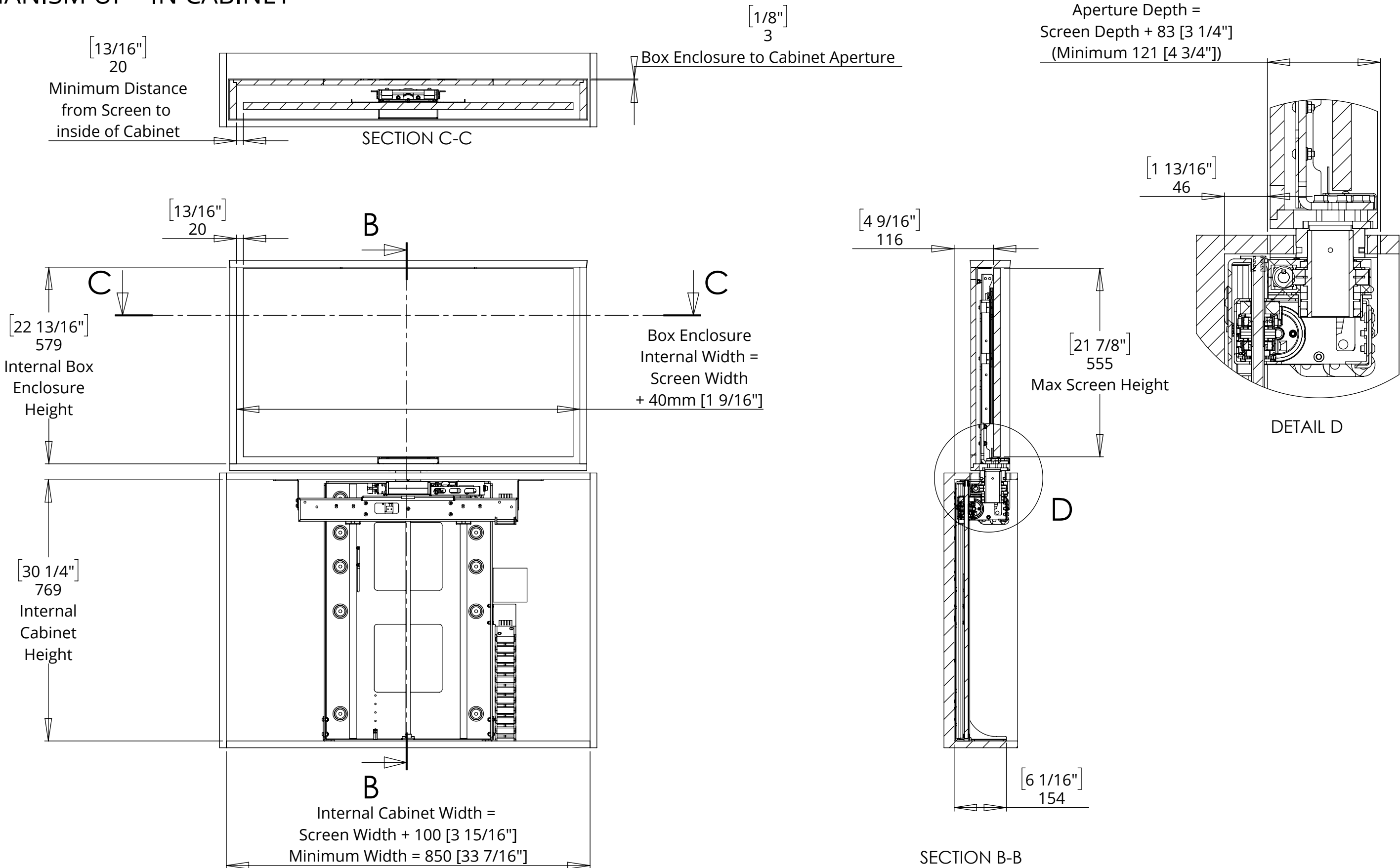
# LSM-S-BE-3

## LIFT SYSTEM SWIVEL FOR BOX ENCLOSURE

MECHANISM UP - IN CABINET



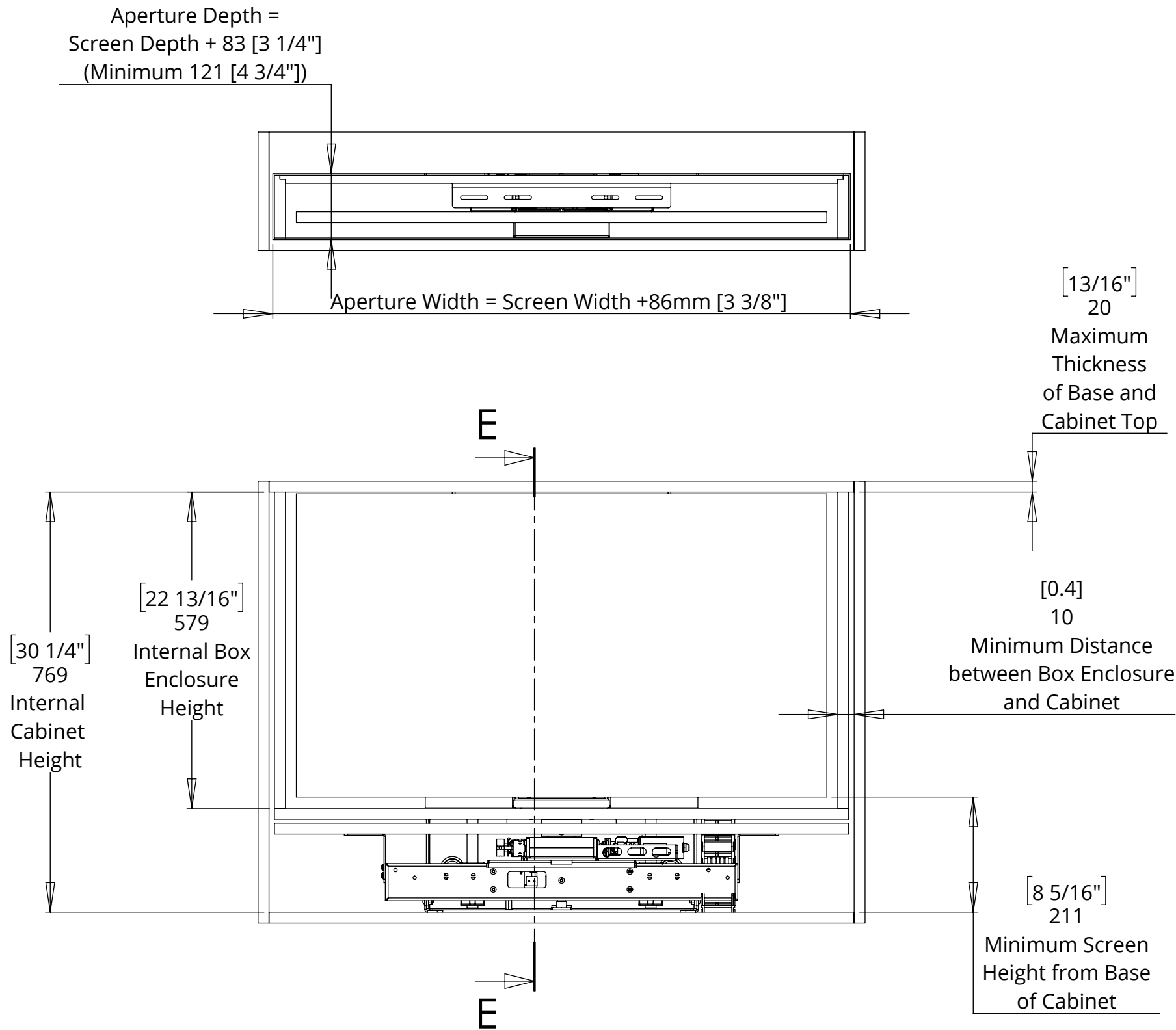
future automation



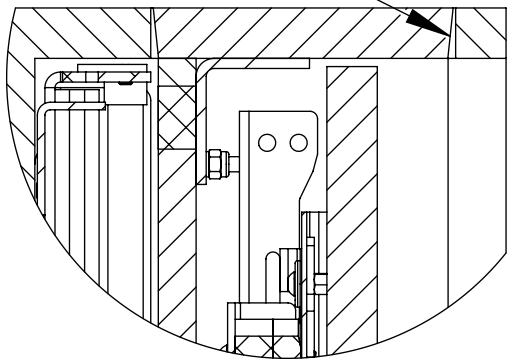
# LSM-S-BE-3

## LIFT SYSTEM SWIVEL FOR BOX ENCLOSURE

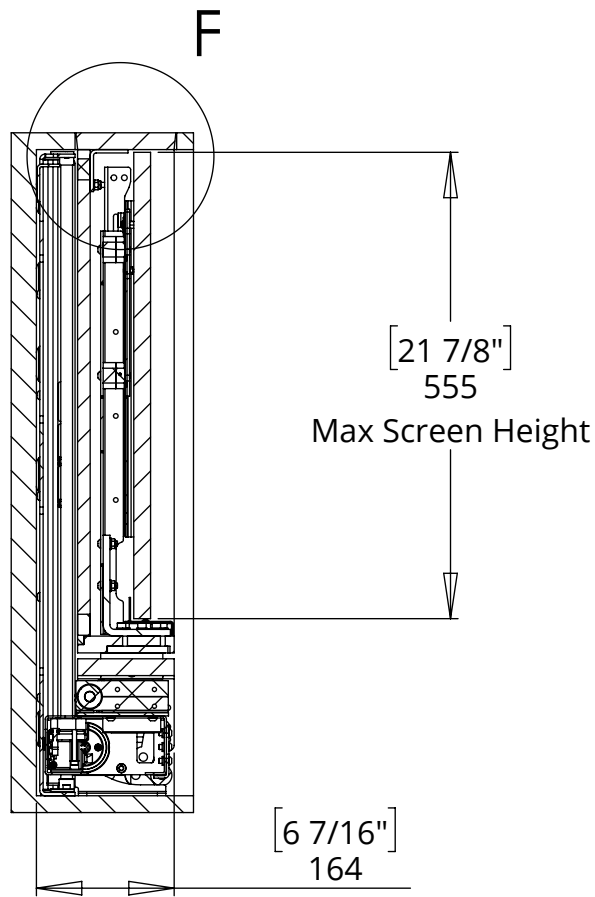
### MECHANISM DOWN - IN CABINET



Shown with tapered Box Enclosure  
Lid in square Cabinet Aperture.  
A tapered Cabinet Aperture can be  
used to improve the fit.



DETAIL F



SECTION E-E

# LSM-S-BE-3

## LIFT SYSTEM SWIVEL FOR BOX ENCLOSURE

### BASE PANEL AND BOX ENCLOSURE LID DETAILS



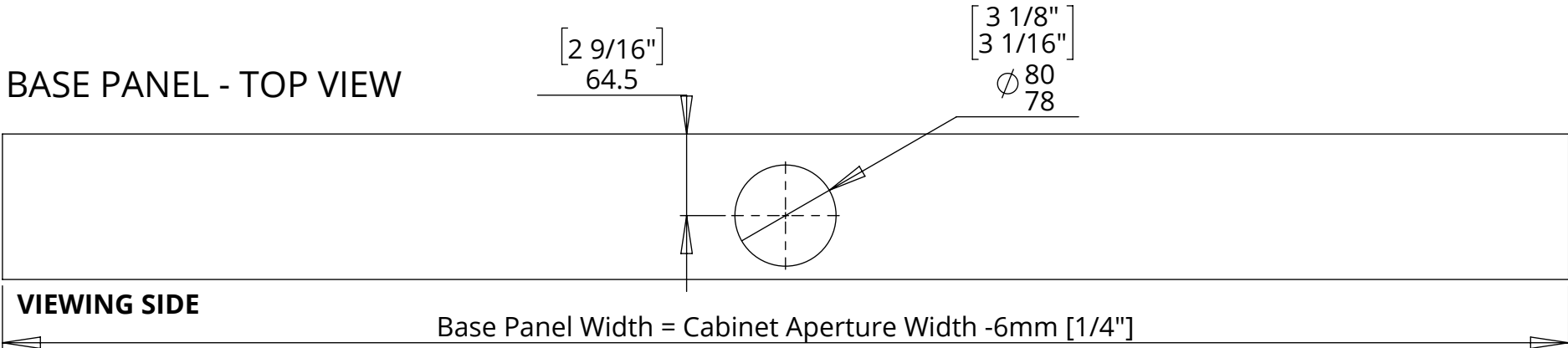
future automation

NOTE: A tapered Box Enclosure Lid creates a good fit in the Cabinet Aperture and helps the Box Enclosure to locate within the cabinet.

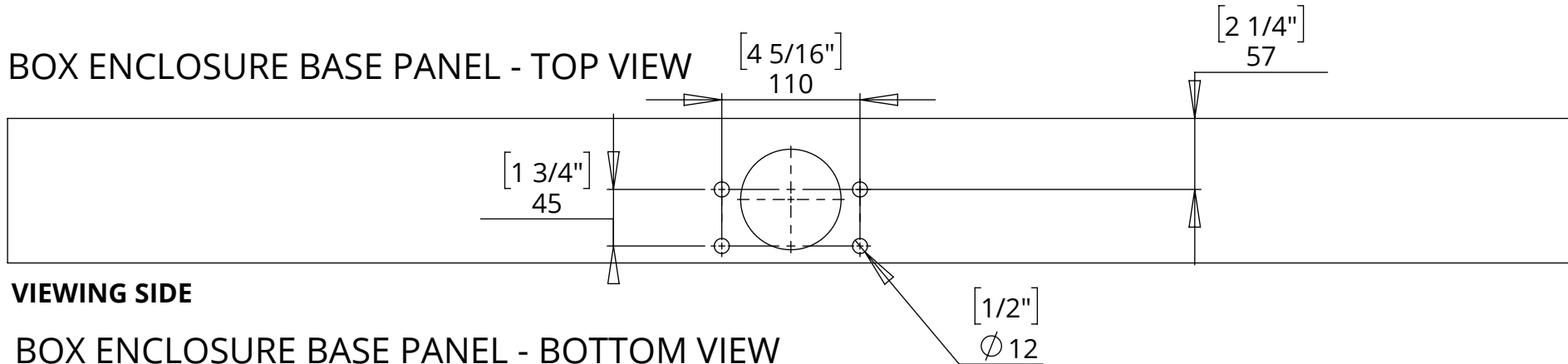
BOX ENCLOSURE LID (TAPERED) - TOP VIEW



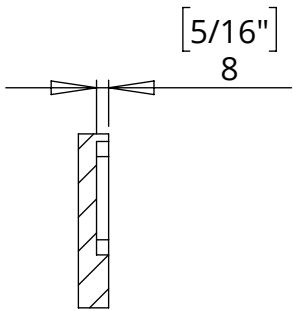
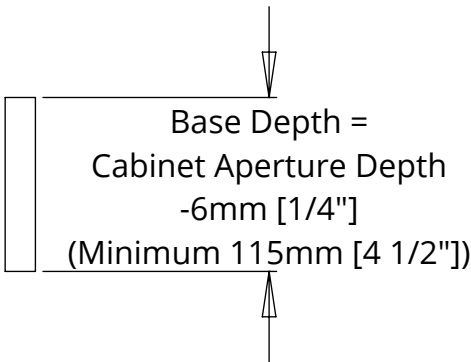
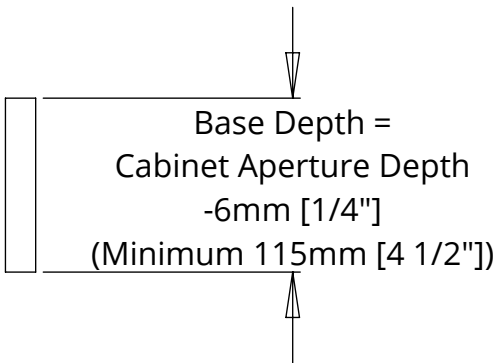
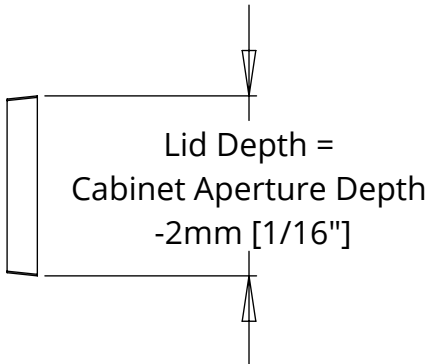
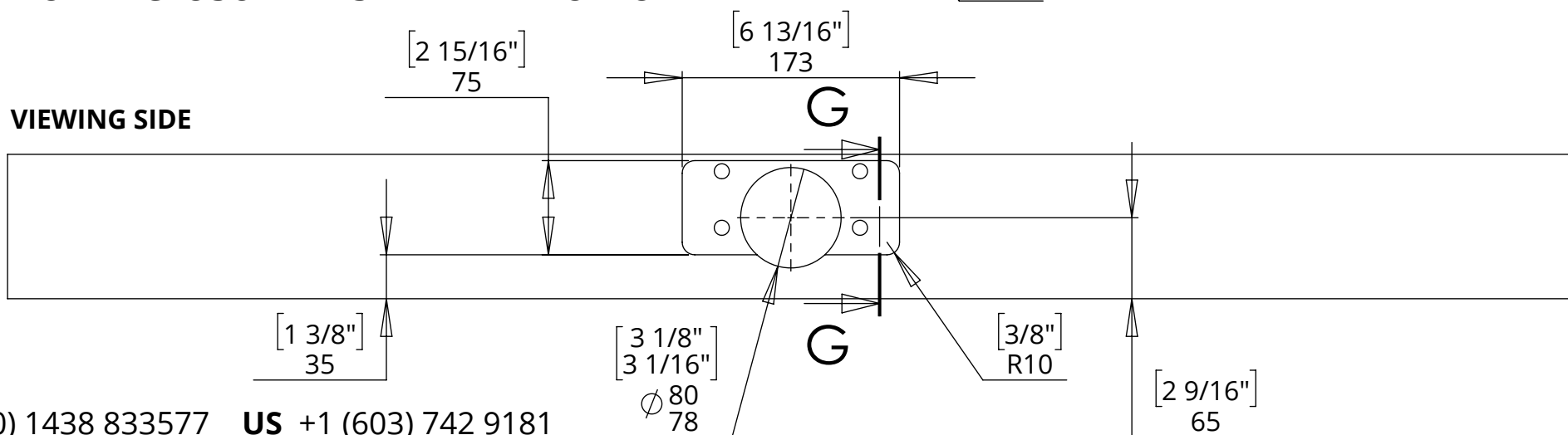
BASE PANEL - TOP VIEW



BOX ENCLOSURE BASE PANEL - TOP VIEW



BOX ENCLOSURE BASE PANEL - BOTTOM VIEW



SECTION G-G

TECHNICAL SHEET

ISSUE 013  
SHEET 6

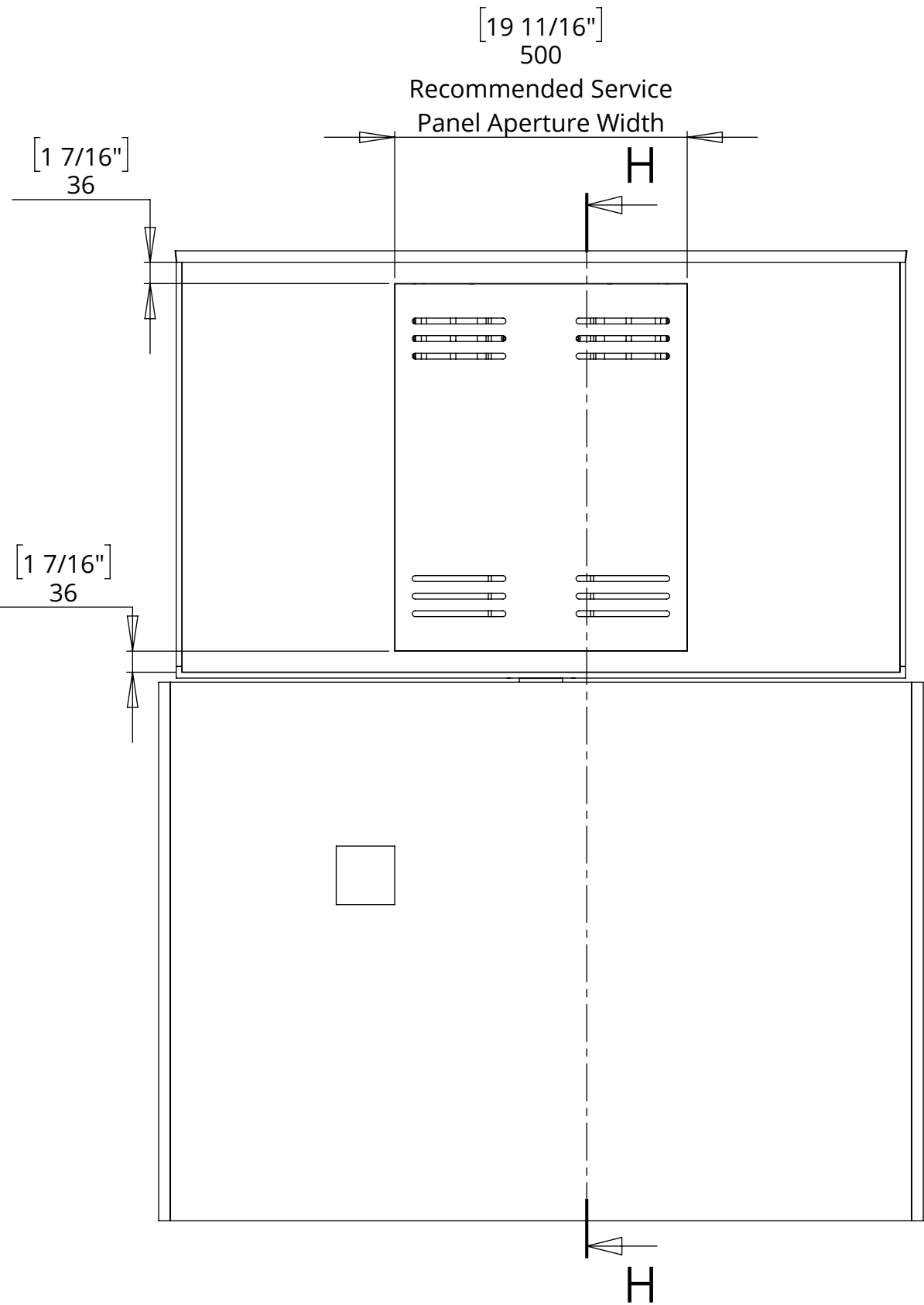
# LSM-S-BE-3

## LIFT SYSTEM SWIVEL FOR BOX ENCLOSURE

### BOX ENCLOSURE POSITION ADJUSTMENT

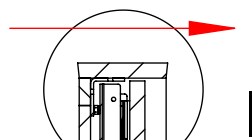


future automation

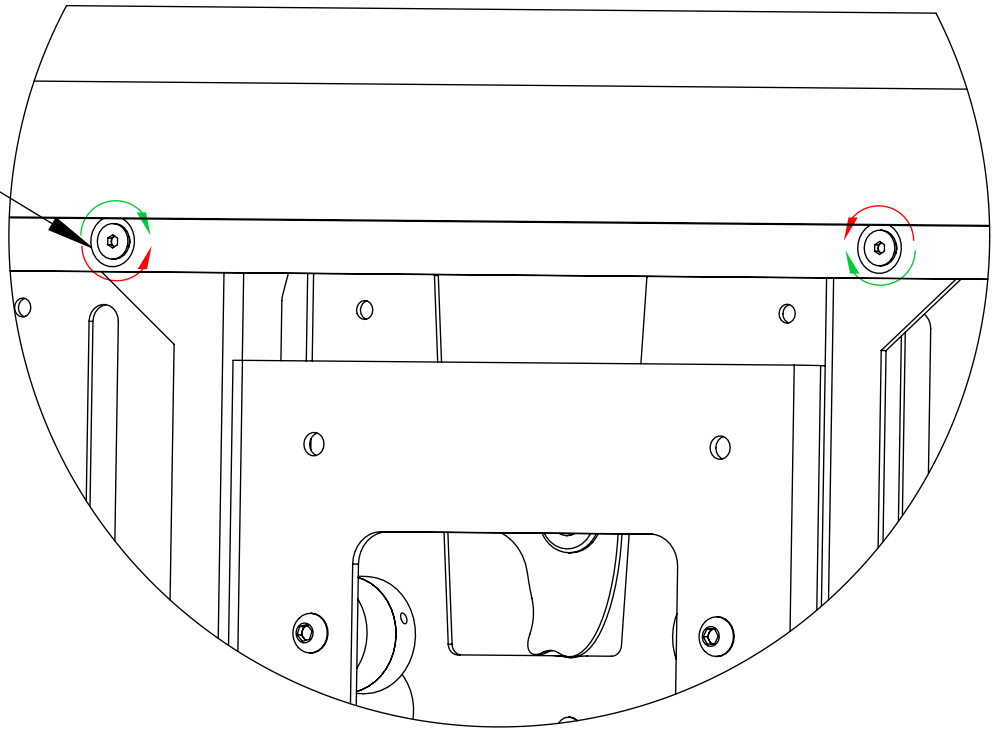


The countersink bolts enable fine tuning the position of the box enclosure relative to the uprights

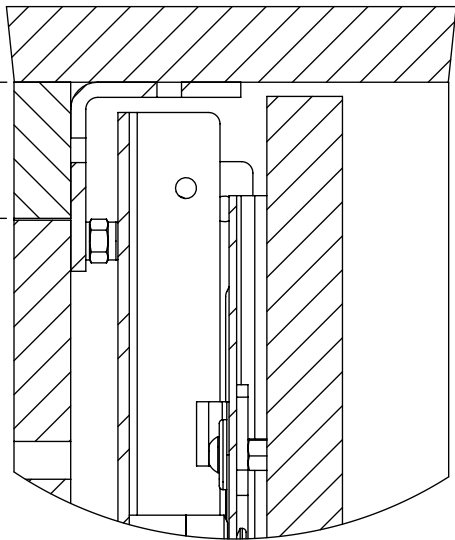
$\pm 5\text{mm}$  Adjustment



SECTION H-H



$1 \frac{7}{16}"$   
36  
Required distance  
between top of aperture  
and bottom of lid



DETAIL I

# LSM-S-BE-3

## LIFT SYSTEM SWIVEL FOR BOX ENCLOSURE

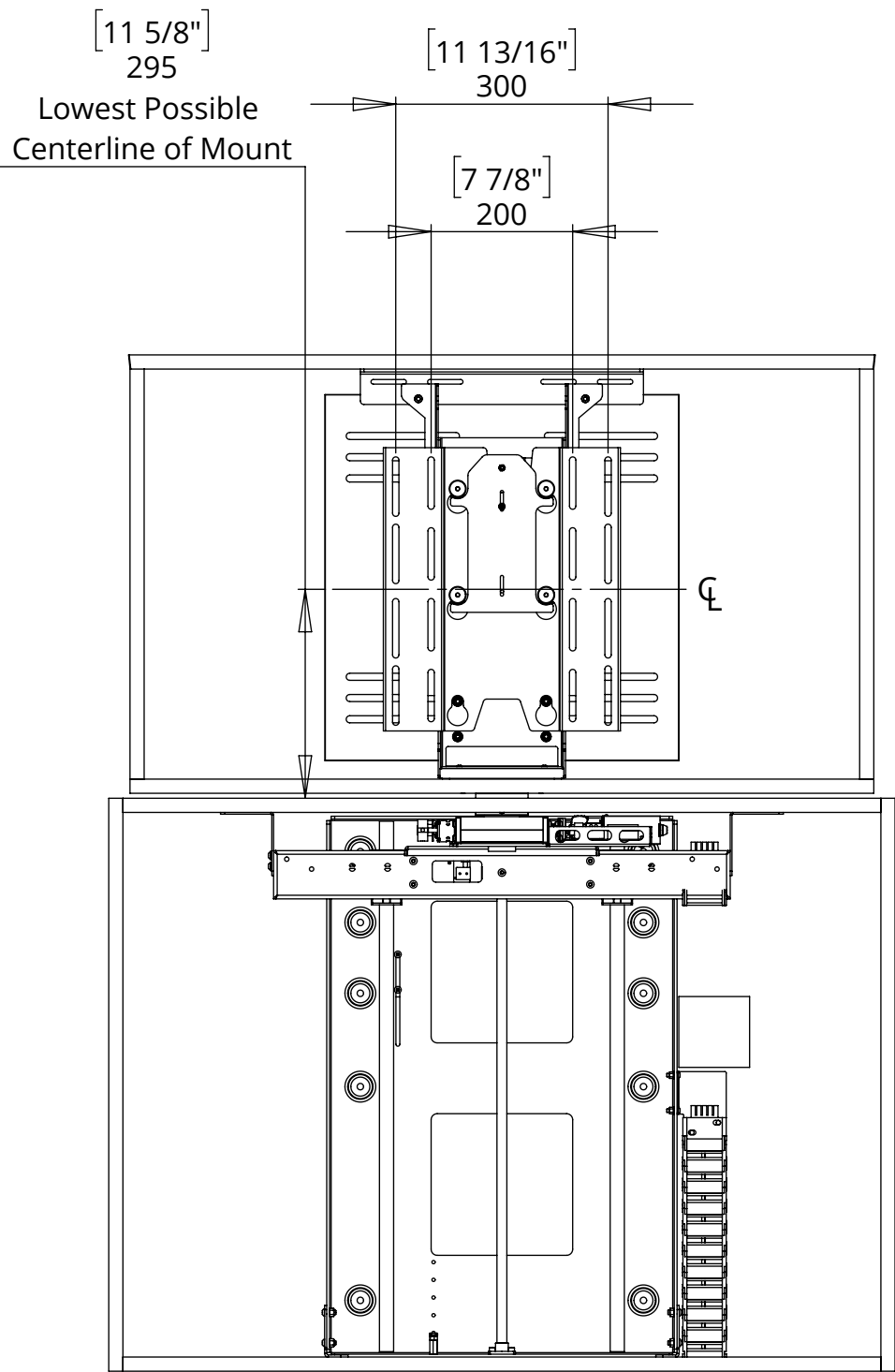
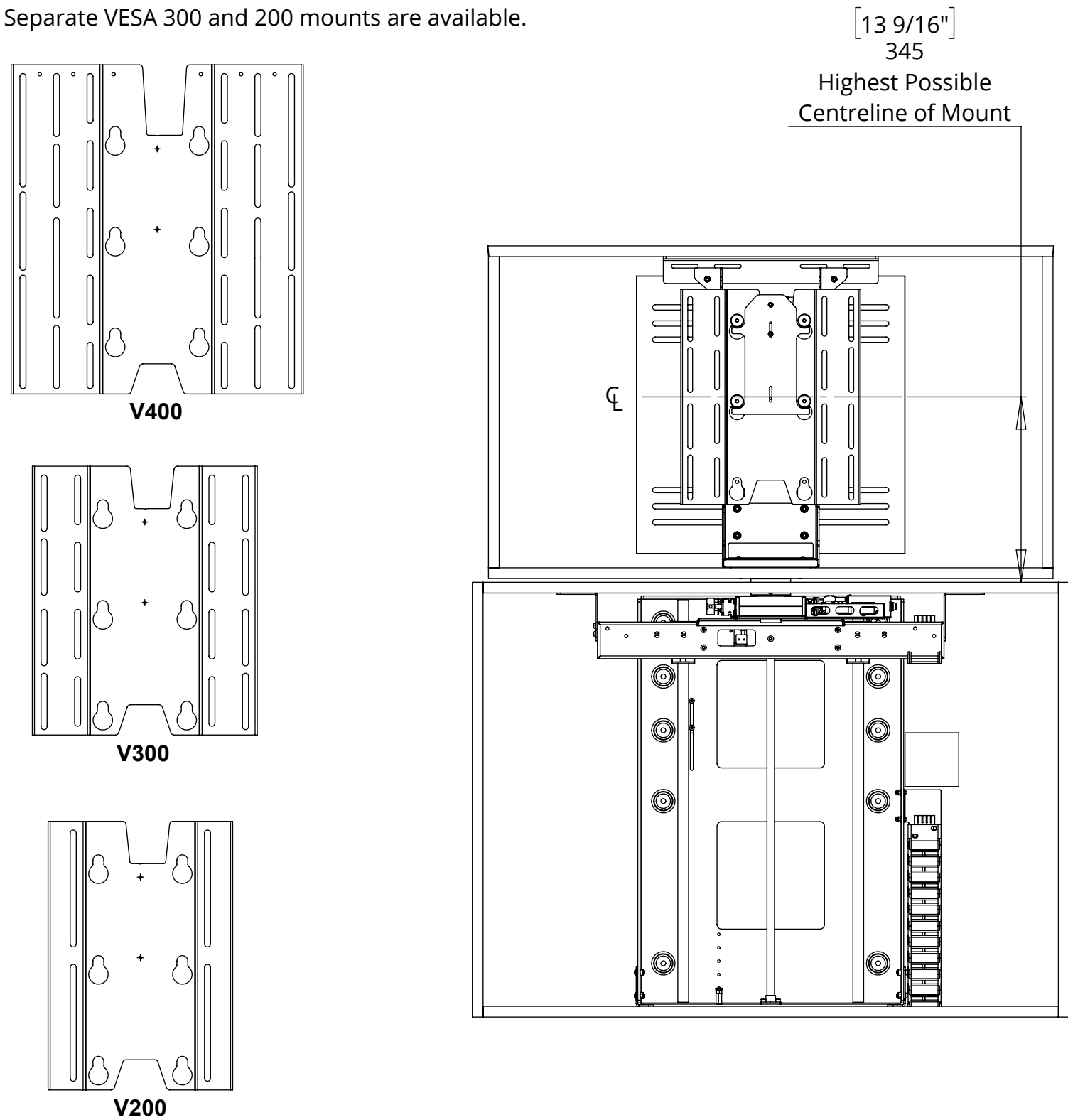


future automation

### SCREEN MOUNT ADJUSTABILITY

A standard adjustable height VESA 400 mount is included. This is also compatible with VESA 300 and 200 mounting patterns

Separate VESA 300 and 200 mounts are available.





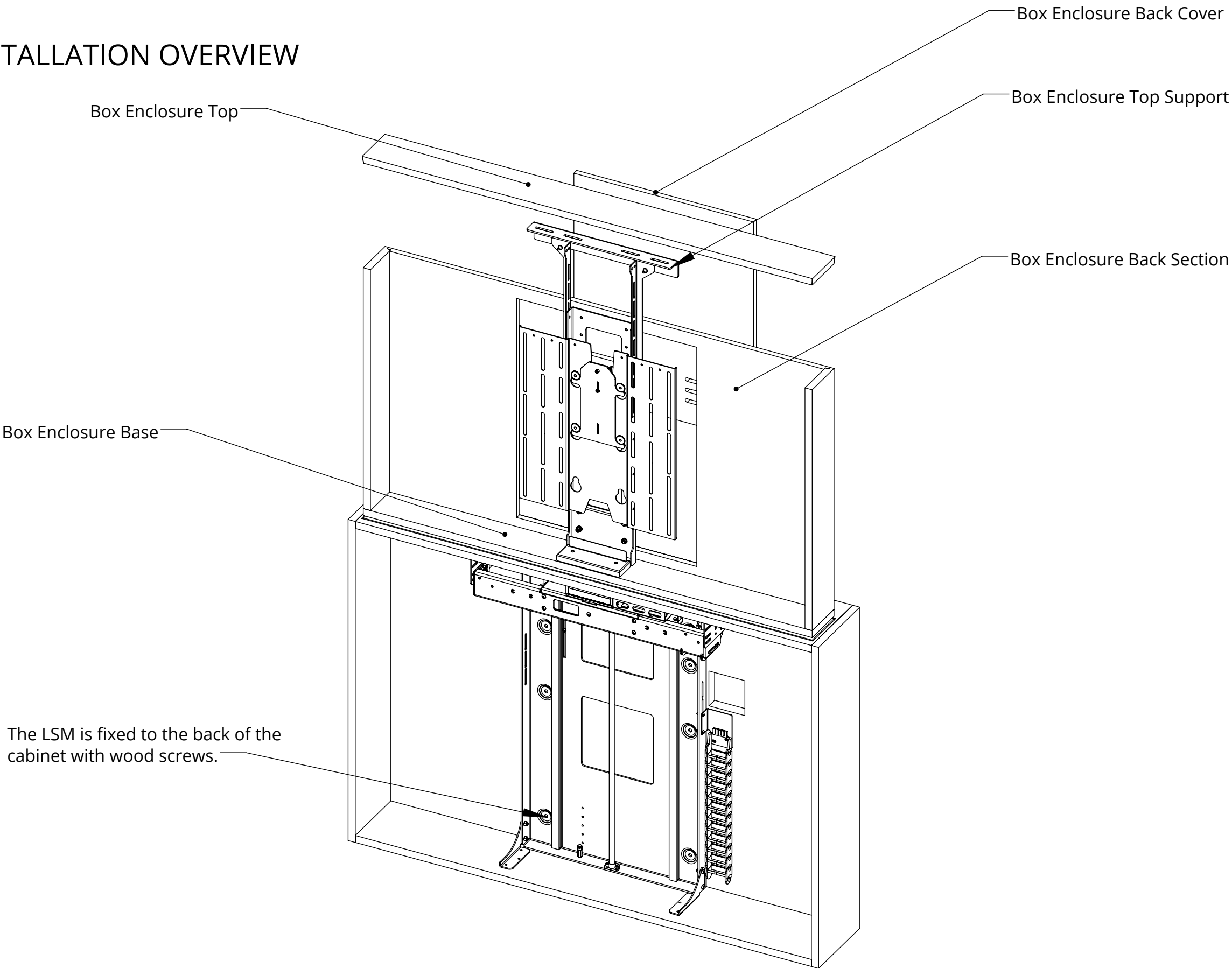
# LSM-S-BE-3

## LIFT SYSTEM SWIVEL FOR BOX ENCLOSURE



future automation

### MECHANISM INSTALLATION OVERVIEW



# LSM-S-BE-3

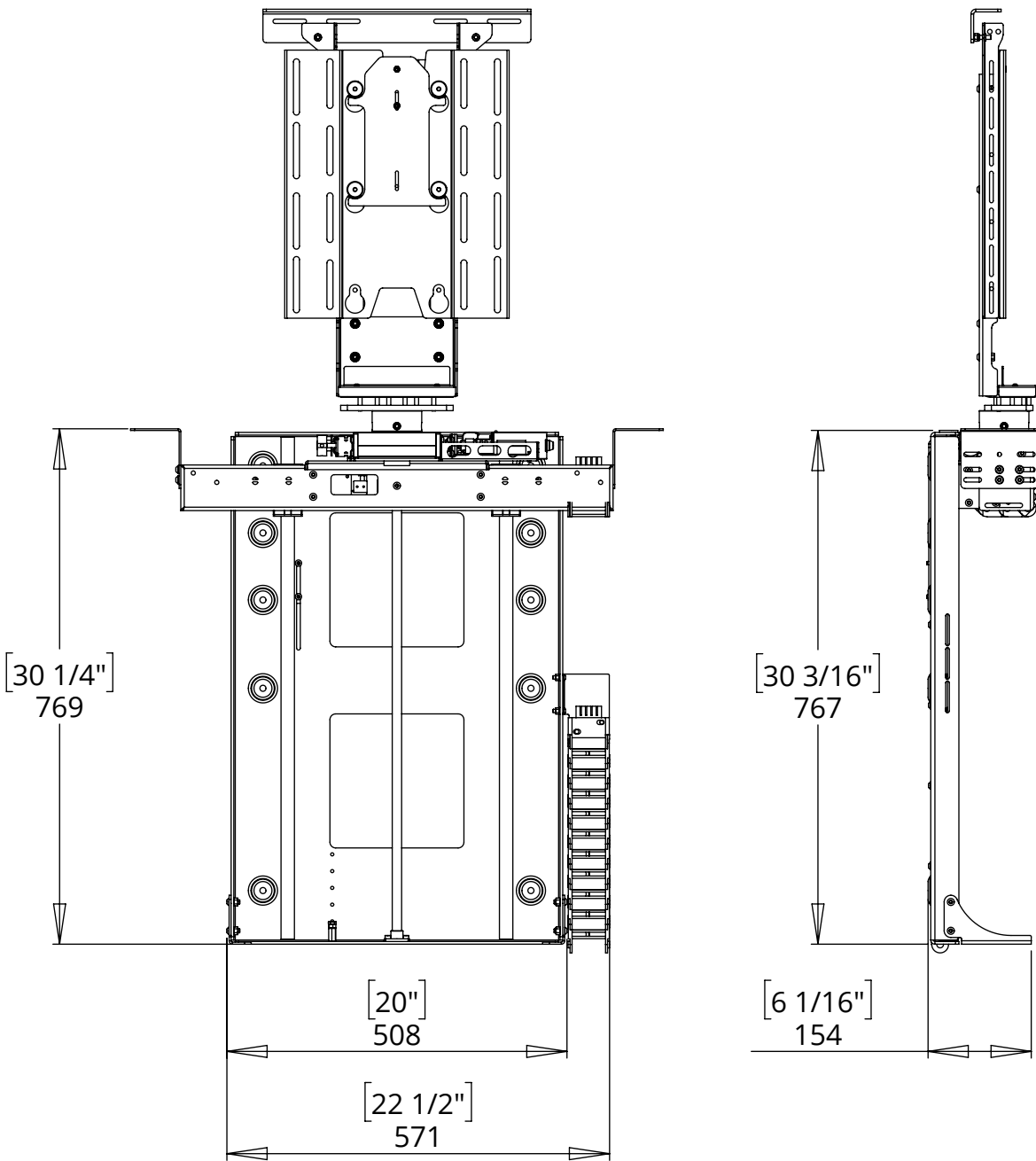
## LIFT SYSTEM SWIVEL FOR BOX ENCLOSURE



future automation

### OVERALL MECHANISM DIMENSIONS

MECHANISM - UP POSITION



MECHANISM - DOWN POSITION

