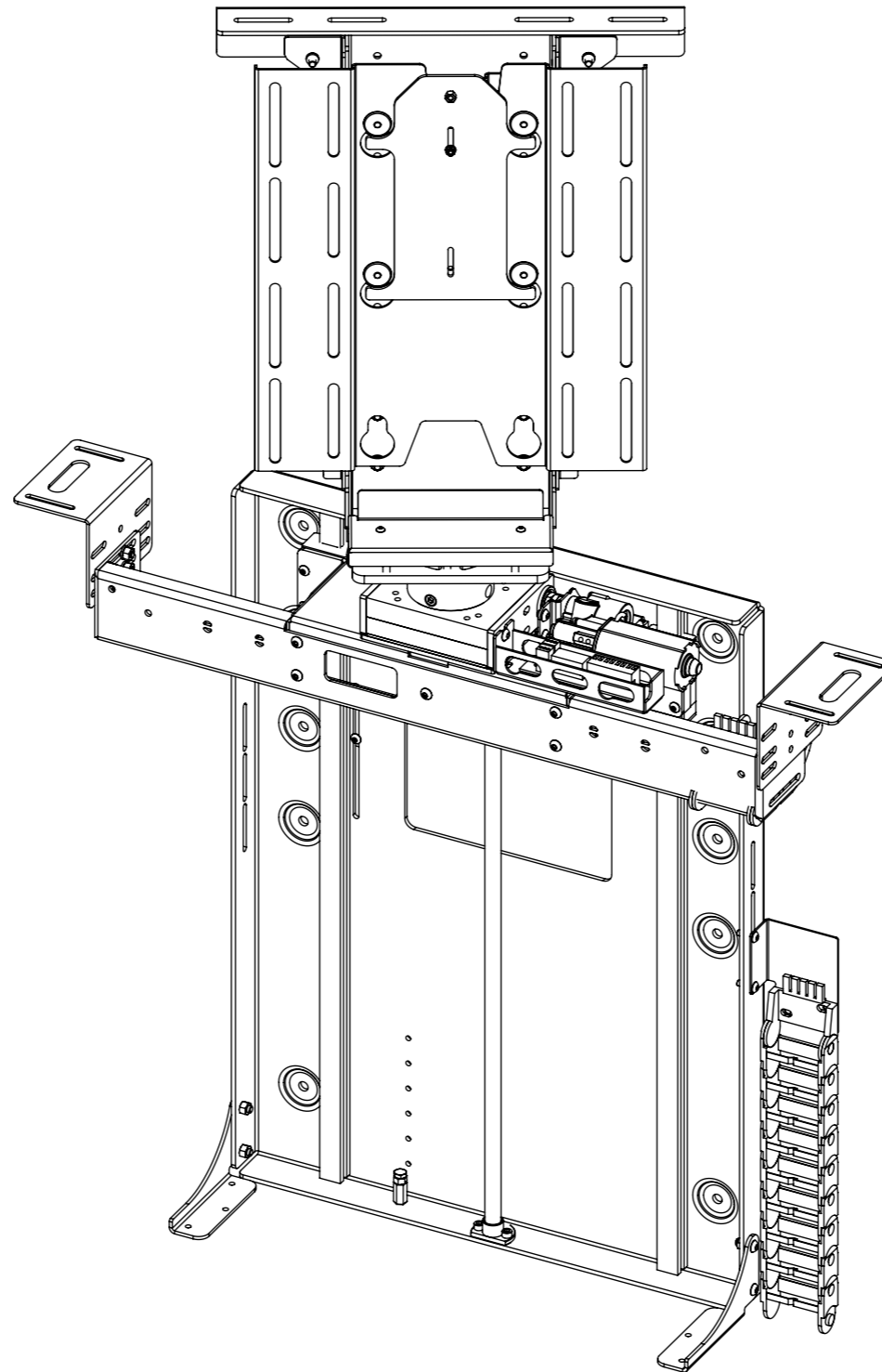


LSM-S-BE-2

LIFT SYSTEM SWIVEL FOR BOX ENCLOSURE



future automation



LSM-S-BE-2

LIFT SYSTEM SWIVEL FOR BOX ENCLOSURE



future automation

SPECIFICATION	MEASUREMENTS
Maximum Screen Height	480mm (18 7/8")
Maximum Rotation	180 ° in each direction
Maximum Lifting Capacity	50Kg (110lb)
Maximum Lifting Capacity (Marine)	30Kg (66lb)
Internal Cabinet Height	694mm (27 5/16")
Decibel Rating	57 dB
Packaging Dimensions	900 x 850 x 330mm (35 7/16 x 33 7/16 x 13")
Shipping Weight	39Kg (86lb)
Movement Type	Motorised
Power Supply Required	110V - 240V AC
Power Consumption	250 - 500W
Power Consumption Standby	3W
Mounting Patterns Supported	VESA 400, 300, 200 W x 400, 300, 200 H
Control Options	IR Remote, RS232, Contact Closure, RF Available
Product Options / Features	Specific B&O and Loewe mounts / adapters, Custom RAL paint finishes
Package Contents	Mechanism, IR remote control
Marine Suitable	Yes

LSM-S-BE-2

LIFT SYSTEM SWIVEL FOR BOX ENCLOSURE



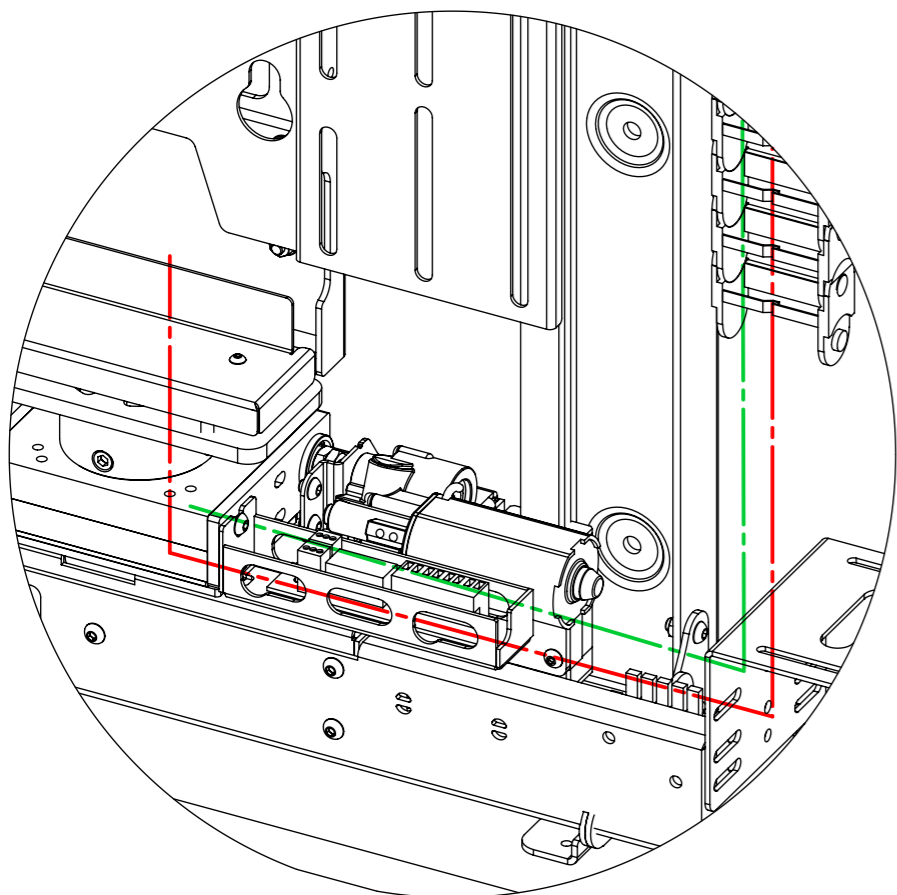
future automation

CABLE ROUTING

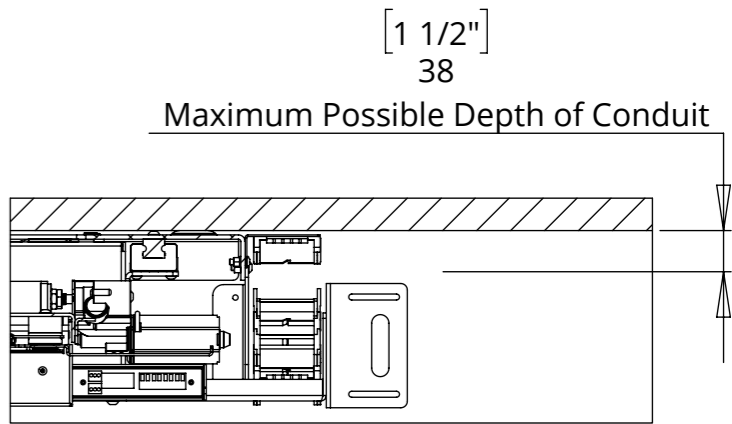
The LSM has an easily removable Mount Cover that cables from the screen can be routed underneath. Cables then travel through the centre of the Mount Boss and into the beam. Cables must be routed carefully to prevent any interference with the LSM beam as it operates.

Screen and Mechanism cables should be routed to a control box outside of the cabinet via an opening in the back of the cabinet or a conduit leading to the bottom.

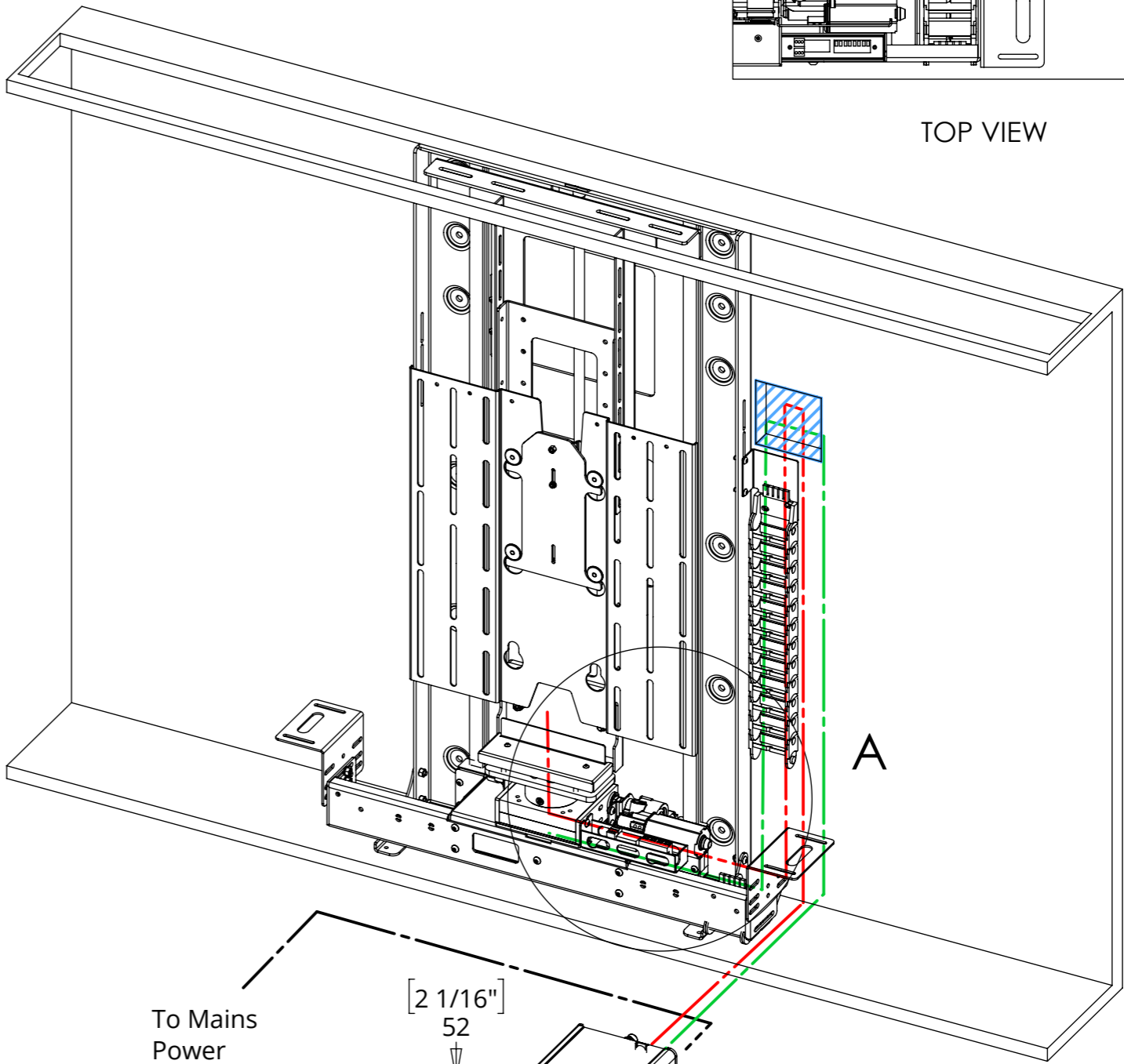
- SCREEN CABLES
- MECHANISM CABLES
- POWER CABLE



DETAIL A



TOP VIEW



To Mains Power

[2 1/16"]
52

[5 7/8"]
150

[8 1/8"]
207

TECHNICAL SHEET

ISSUE 013
SHEET 3

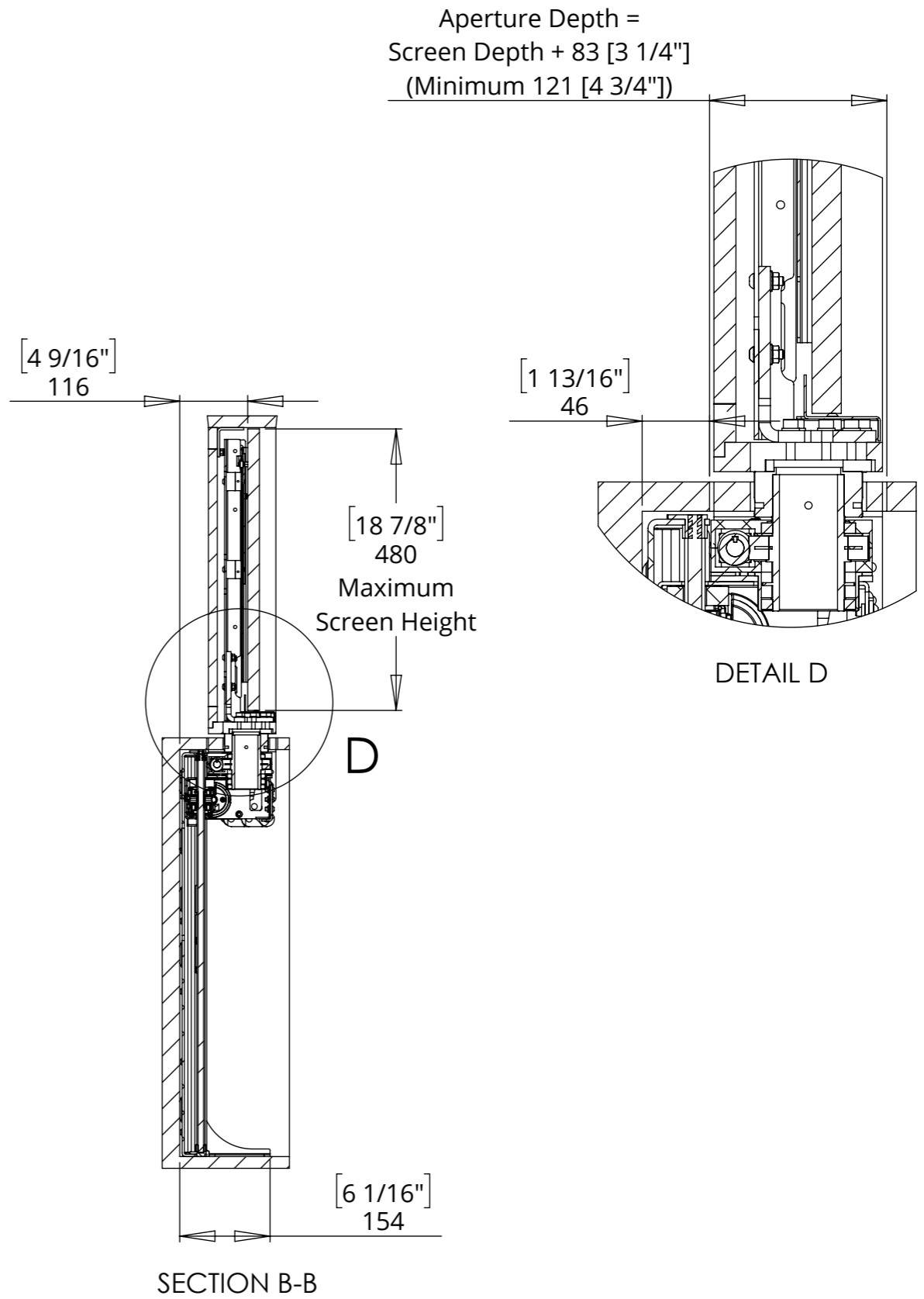
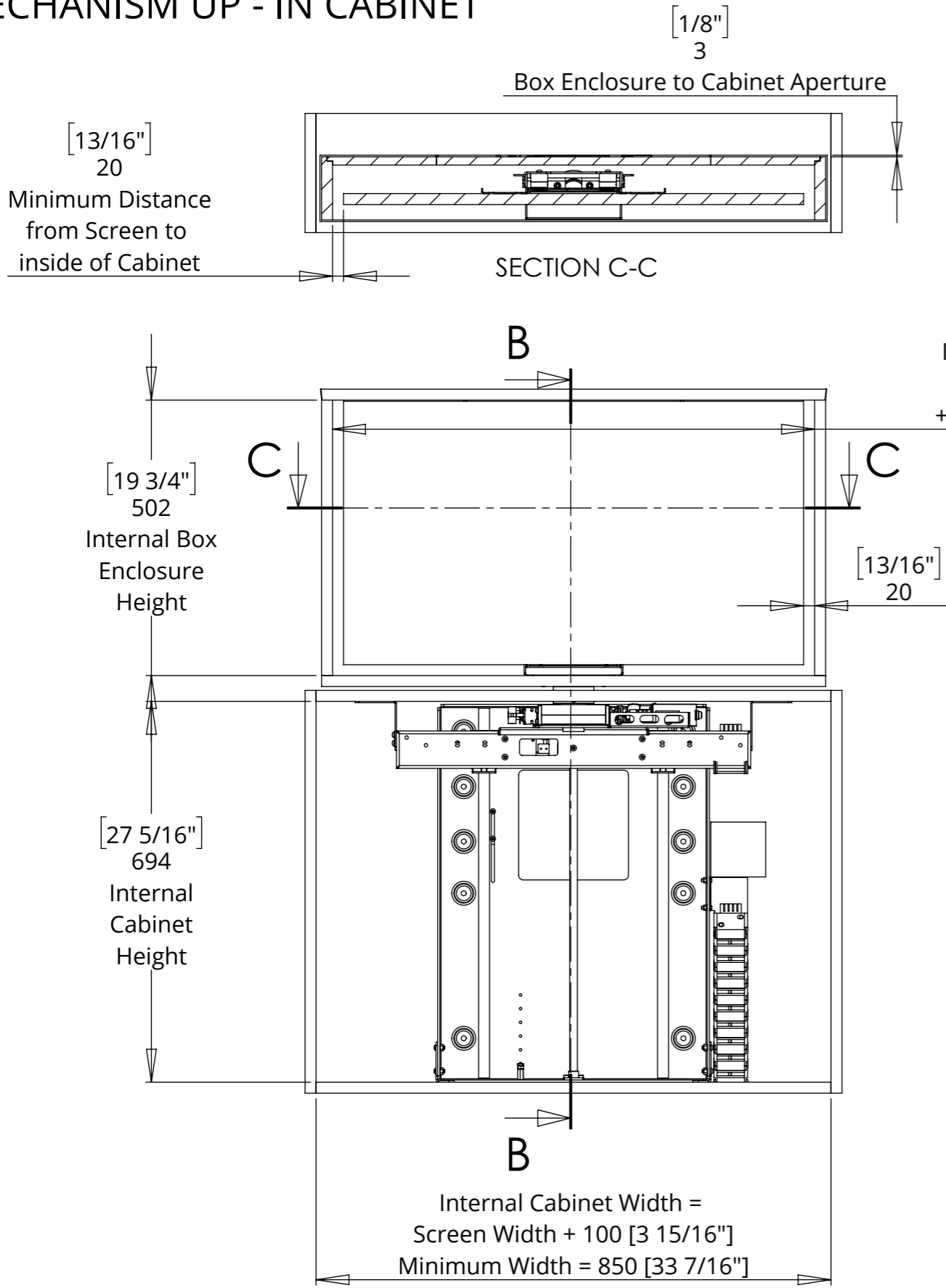
LSM-S-BE-2

LIFT SYSTEM SWIVEL FOR BOX ENCLOSURE

MECHANISM UP - IN CABINET



future automation

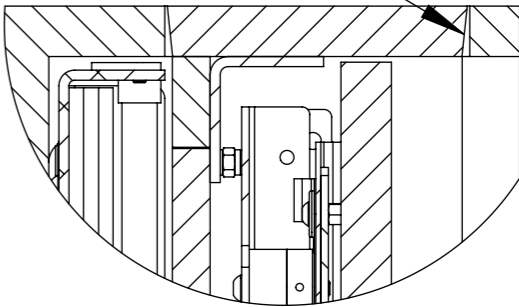


LSM-S-BE-2

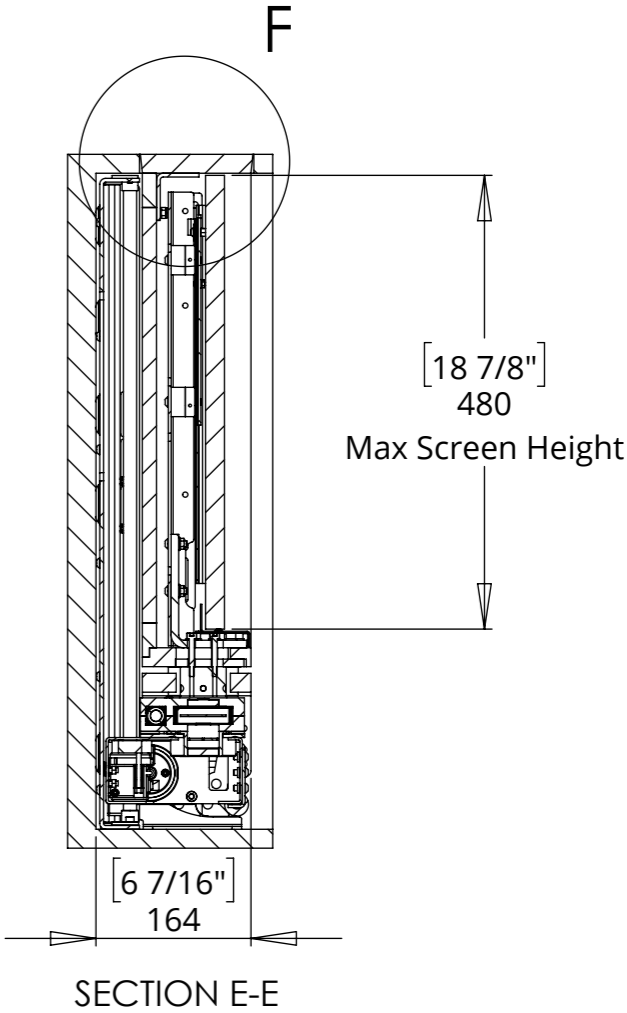
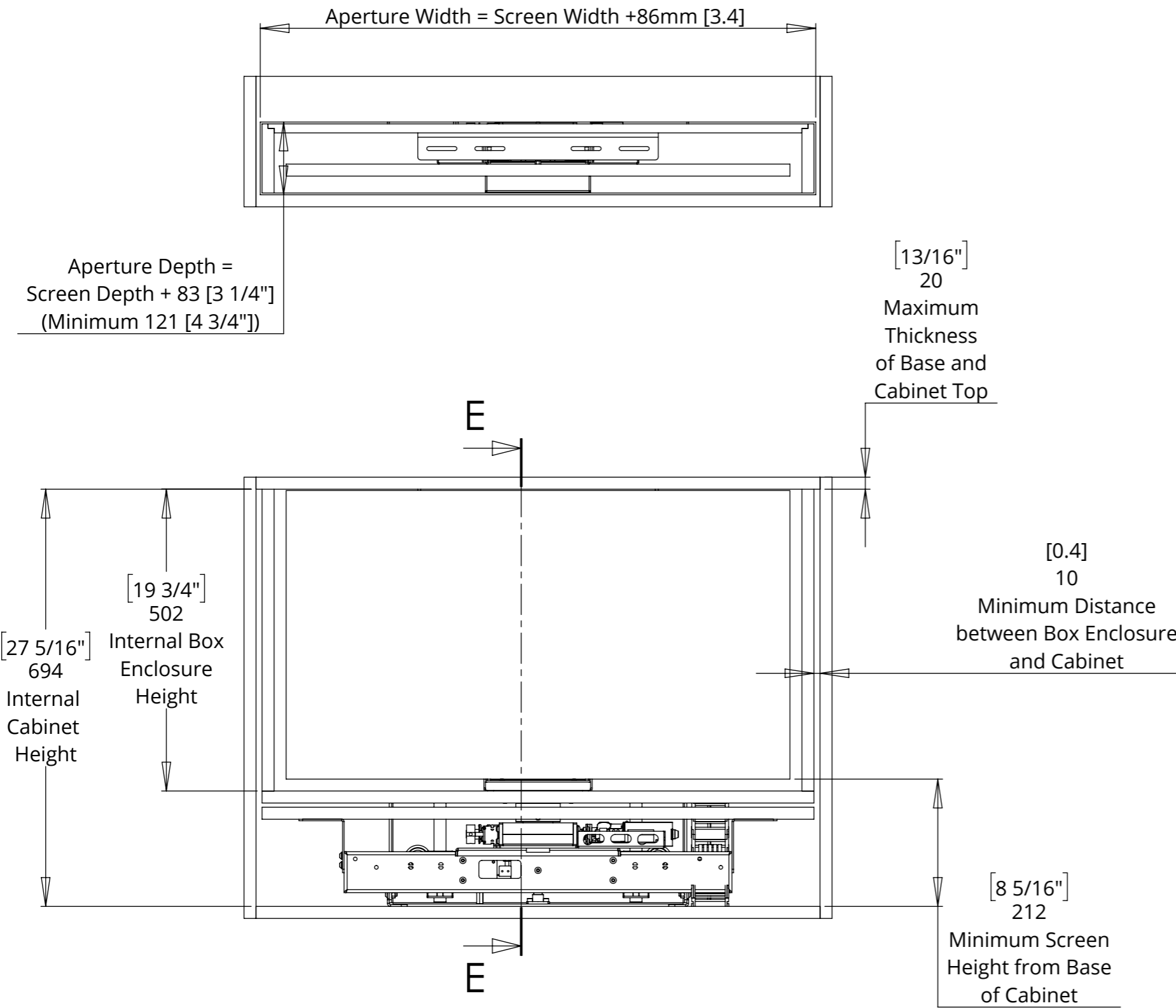
LIFT SYSTEM SWIVEL FOR BOX ENCLOSURE

MECHANISM DOWN - IN CABINET

Shown with tapered Box Enclosure Lid in square Cabinet Aperture.
A tapered Cabinet Aperture can be used to improve the fit.



DETAIL F



LSM-S-BE-2

LIFT SYSTEM SWIVEL FOR BOX ENCLOSURE

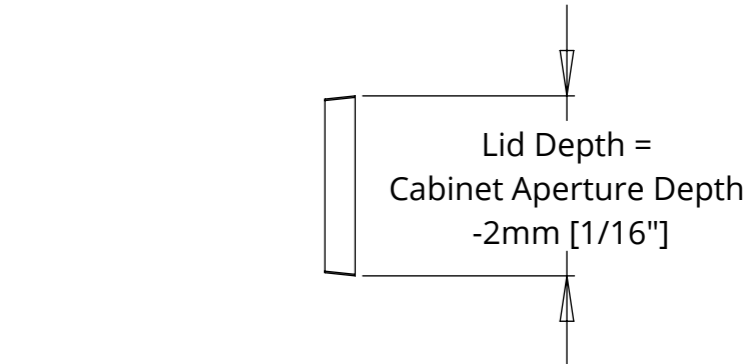
BASE PANEL AND BOX ENCLOSURE LID DETAILS



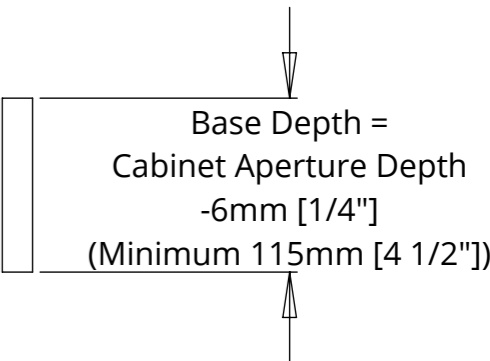
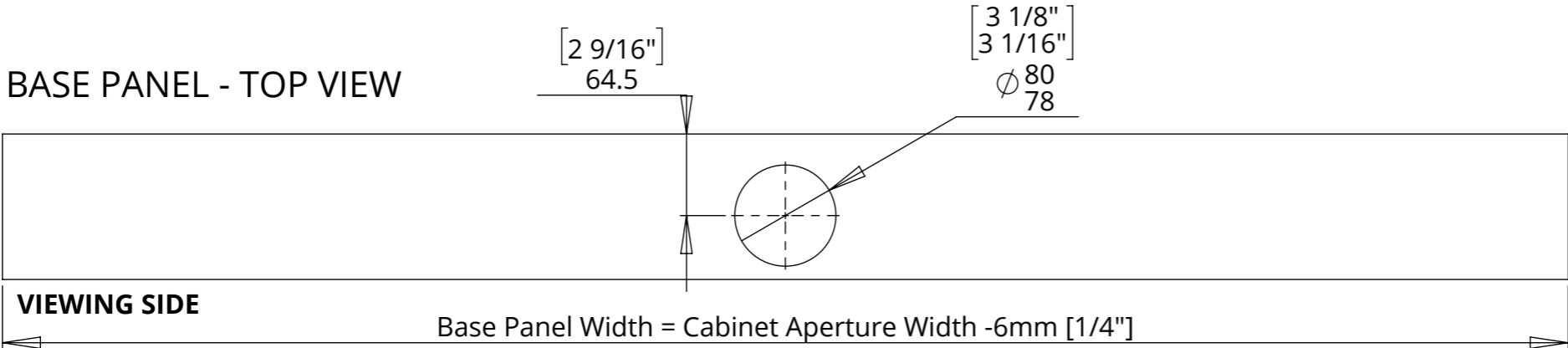
future automation

NOTE: A tapered Box Enclosure Lid creates a good fit in the Cabinet Aperture and helps the Box Enclosure to locate within the cabinet.

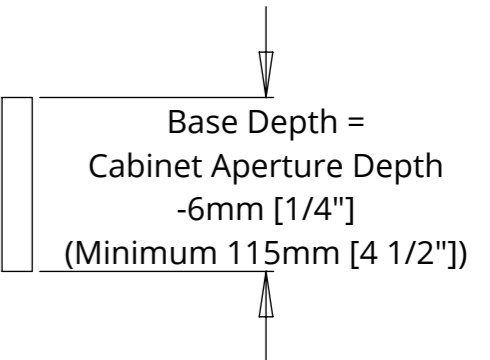
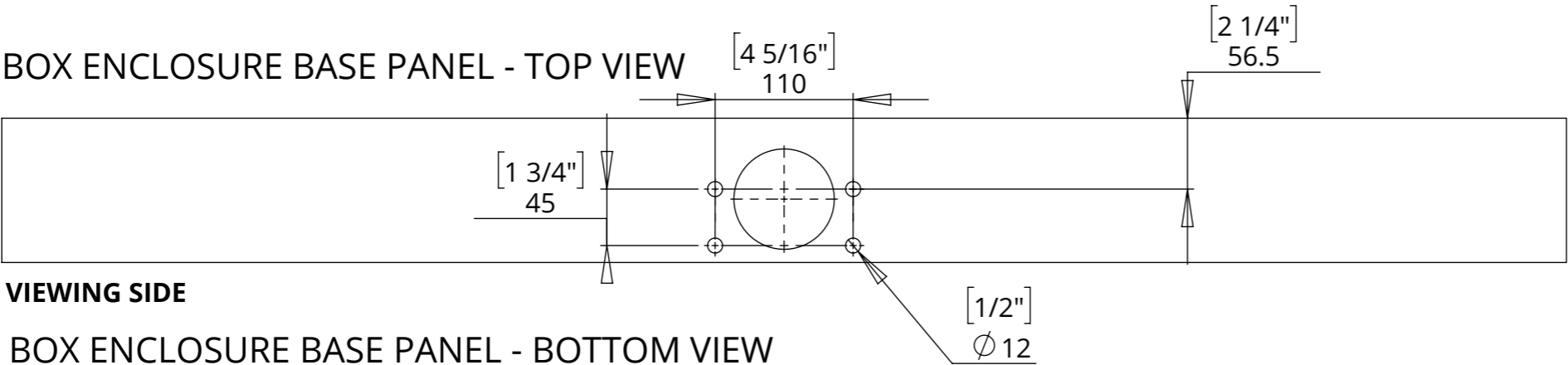
BOX ENCLOSURE LID (TAPERED) - TOP VIEW



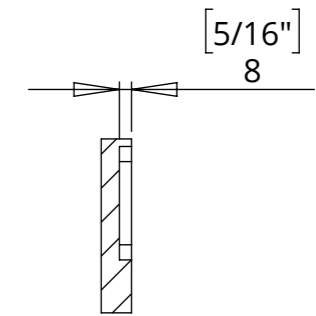
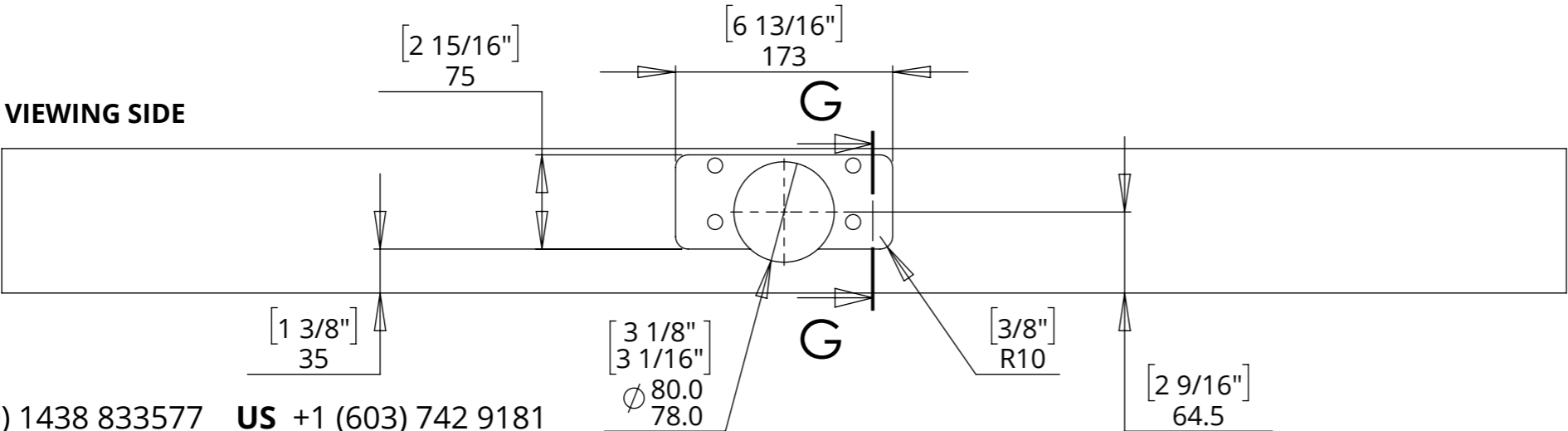
BASE PANEL - TOP VIEW



BOX ENCLOSURE BASE PANEL - TOP VIEW



BOX ENCLOSURE BASE PANEL - BOTTOM VIEW

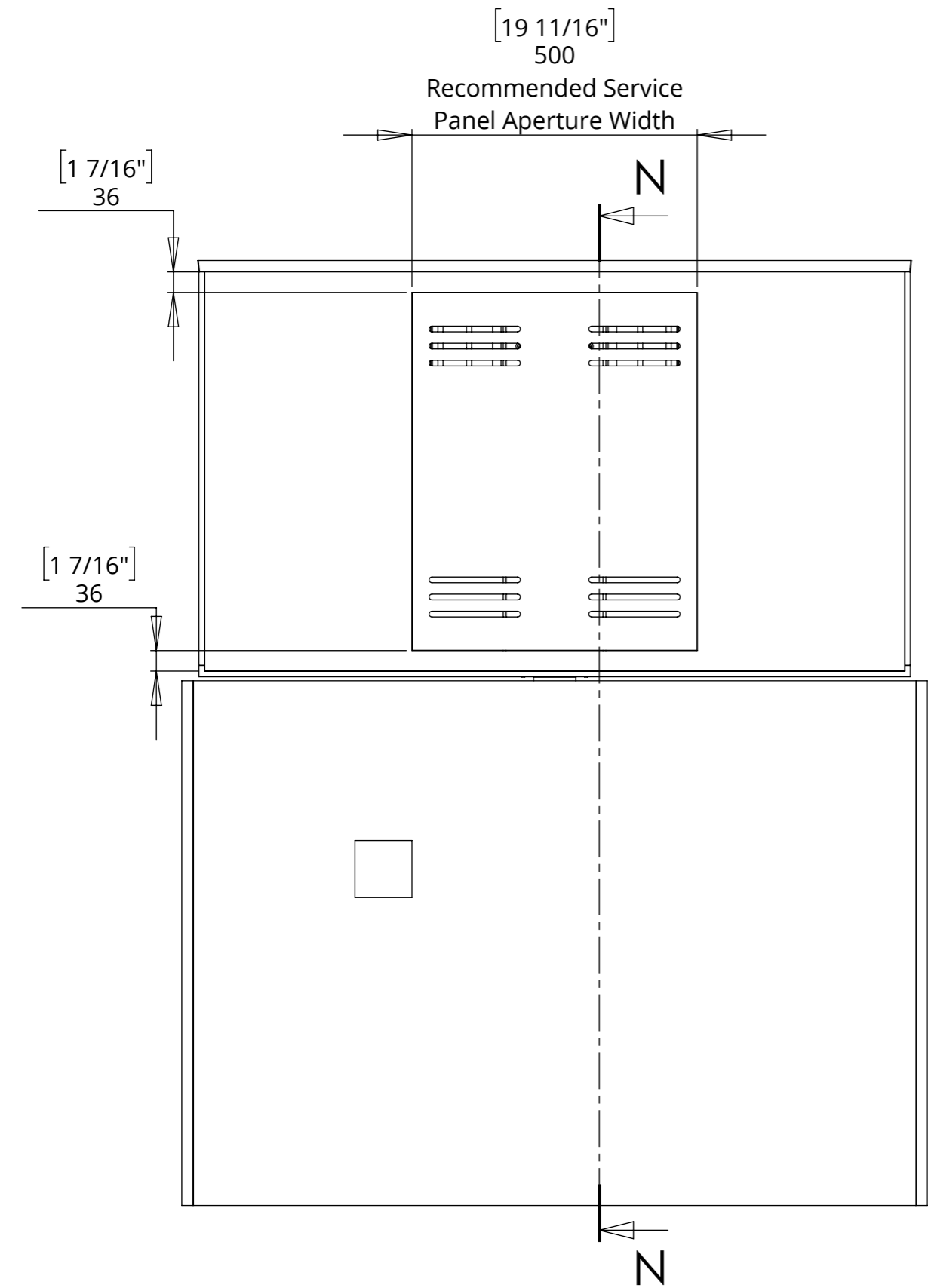


SECTION G-G

LSM-S-BE-2

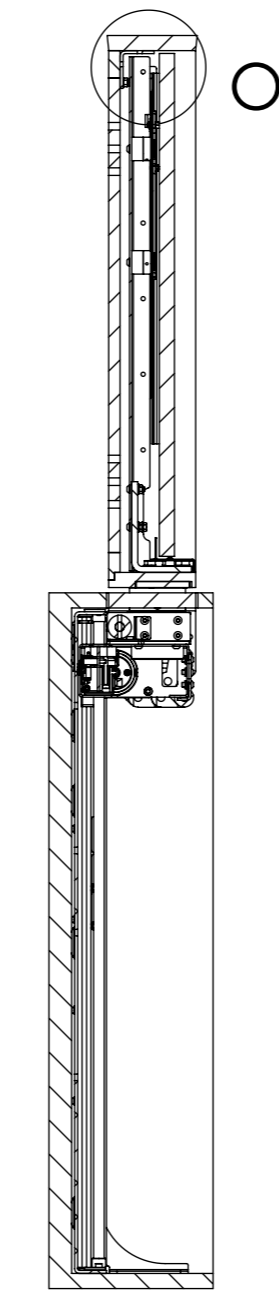
LIFT SYSTEM SWIVEL FOR BOX ENCLOSURE

BOX ENCLOSURE POSITION ADJUSTMENT

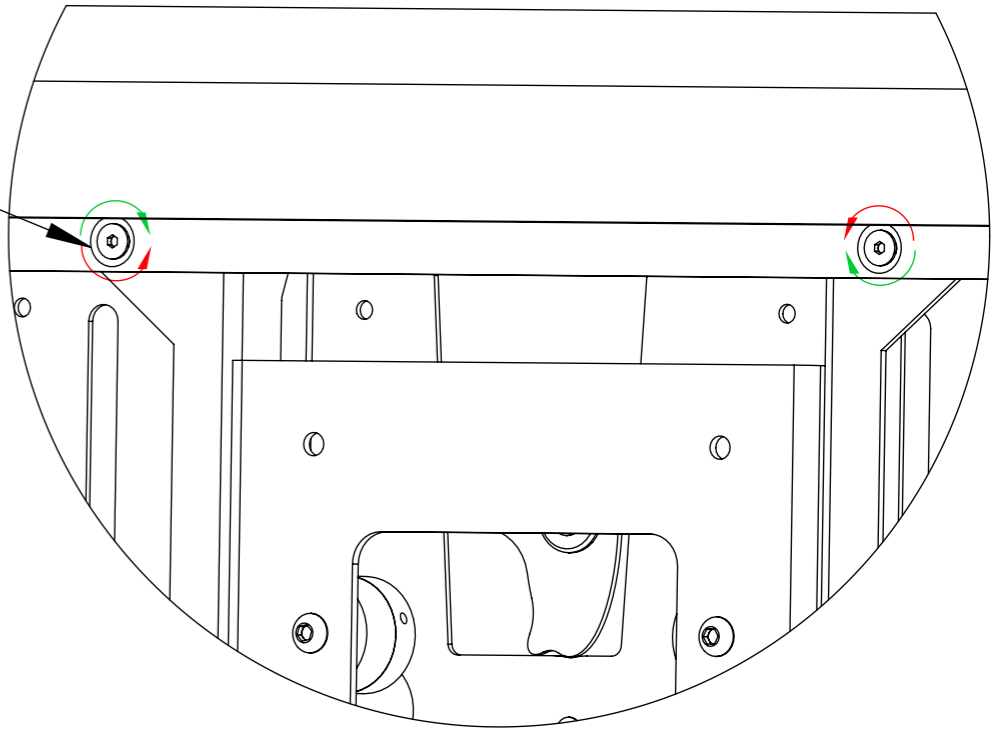


The countersink bolts enable fine tuning the position of the box enclosure relative to the uprights

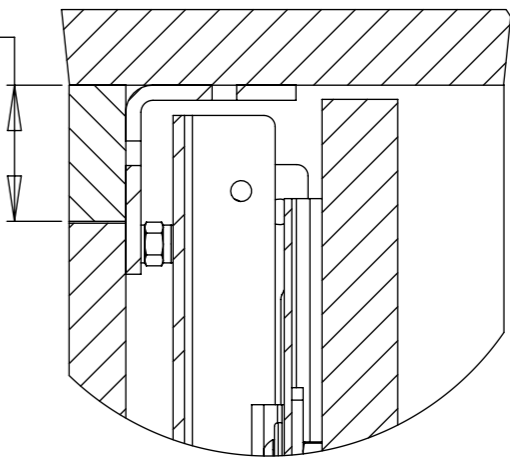
$\pm 5\text{mm}$ Adjustment



SECTION N-N



$1 \frac{7}{16}"$
36
Required distance
between top of aperture
and bottom of lid



DETAIL O

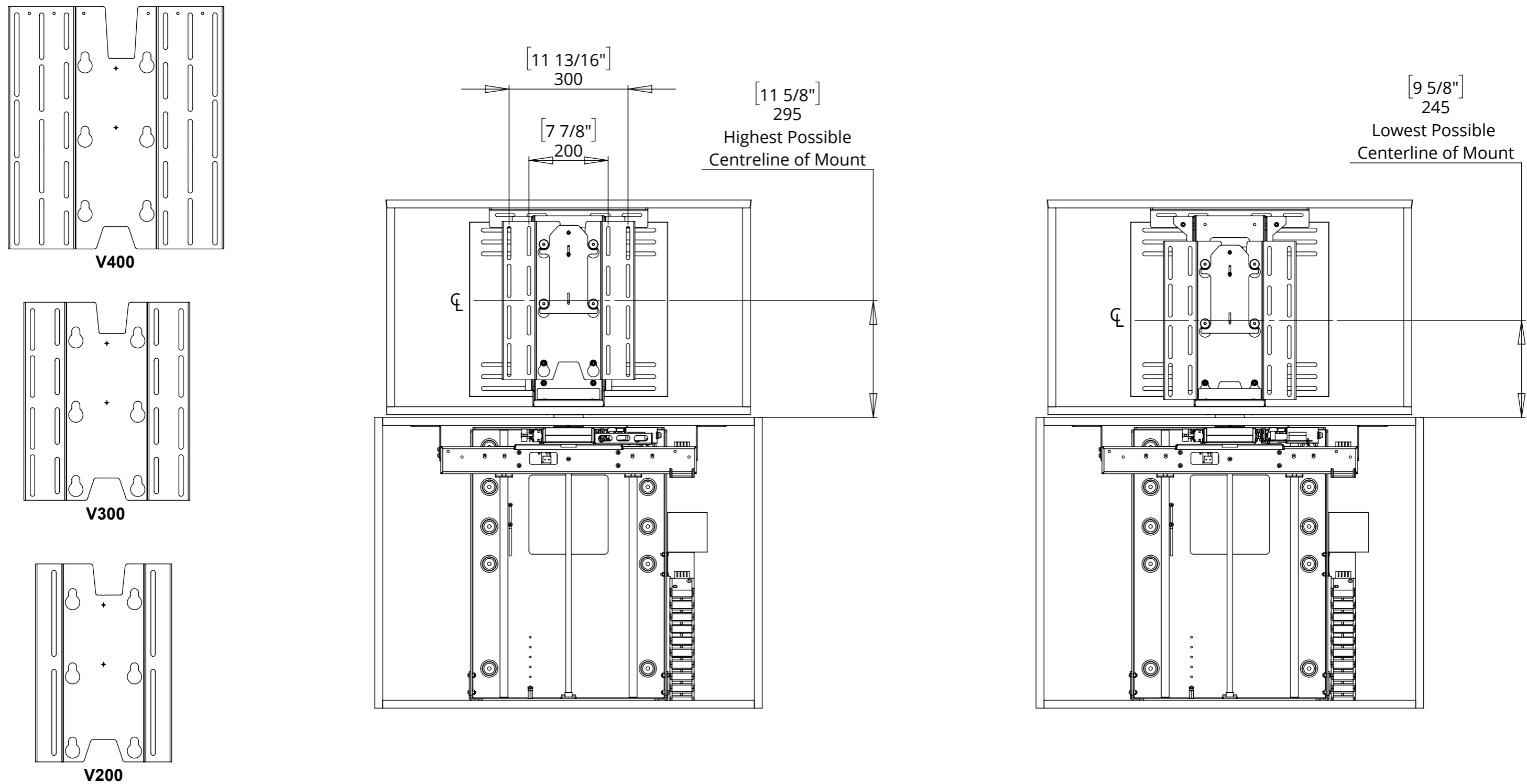
LSM-S-BE-2

LIFT SYSTEM SWIVEL FOR BOX ENCLOSURE

SCREEN MOUNT ADJUSTABILITY

A standard adjustable height VESA 400 mount is included. This is also compatible with VESA 300 and 200 mounting patterns

Separate VESA 300 and 200 mounts are available.



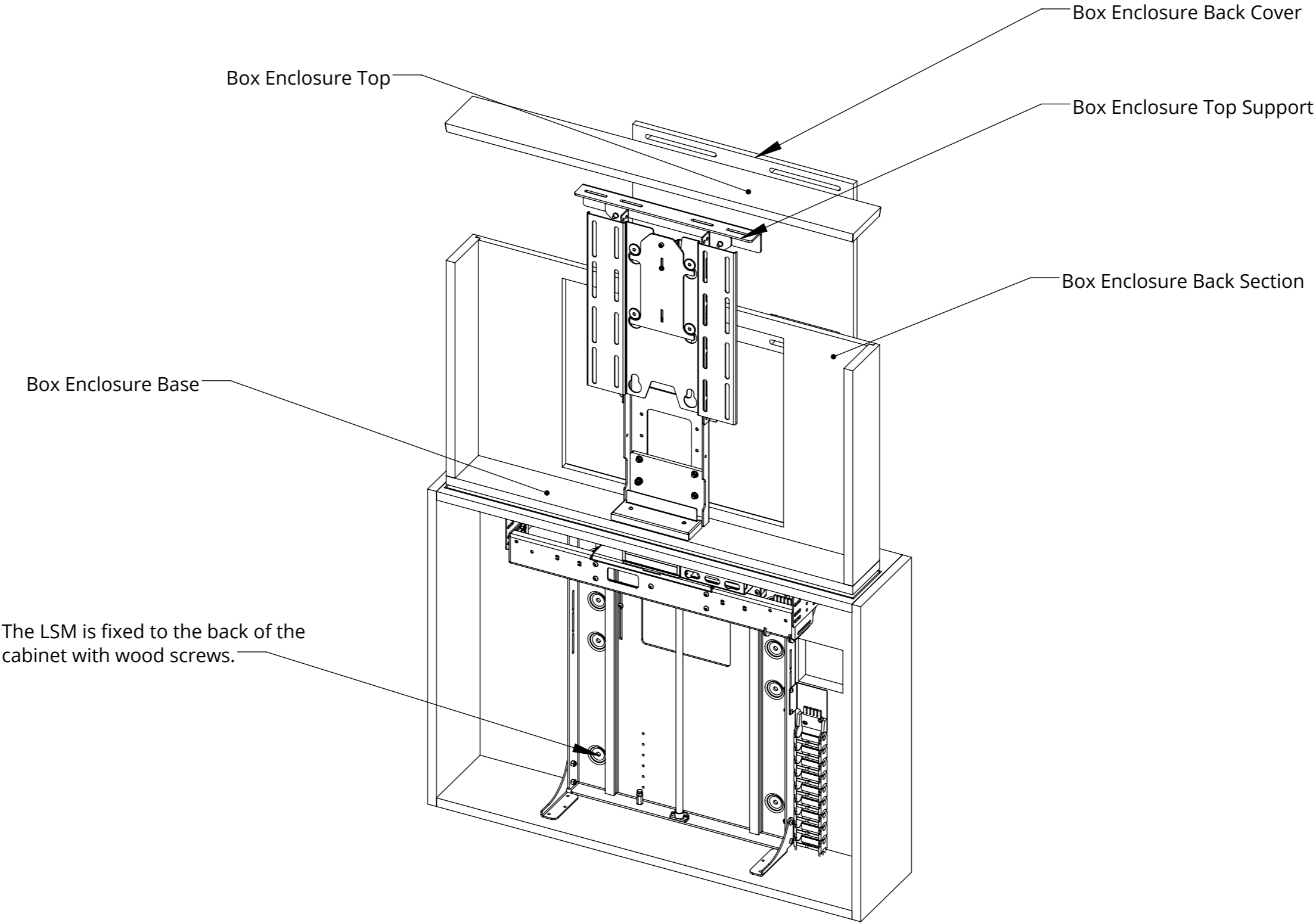
LSM-S-BE-2

LIFT SYSTEM SWIVEL FOR BOX ENCLOSURE



future automation

MECHANISM INSTALLATION OVERVIEW

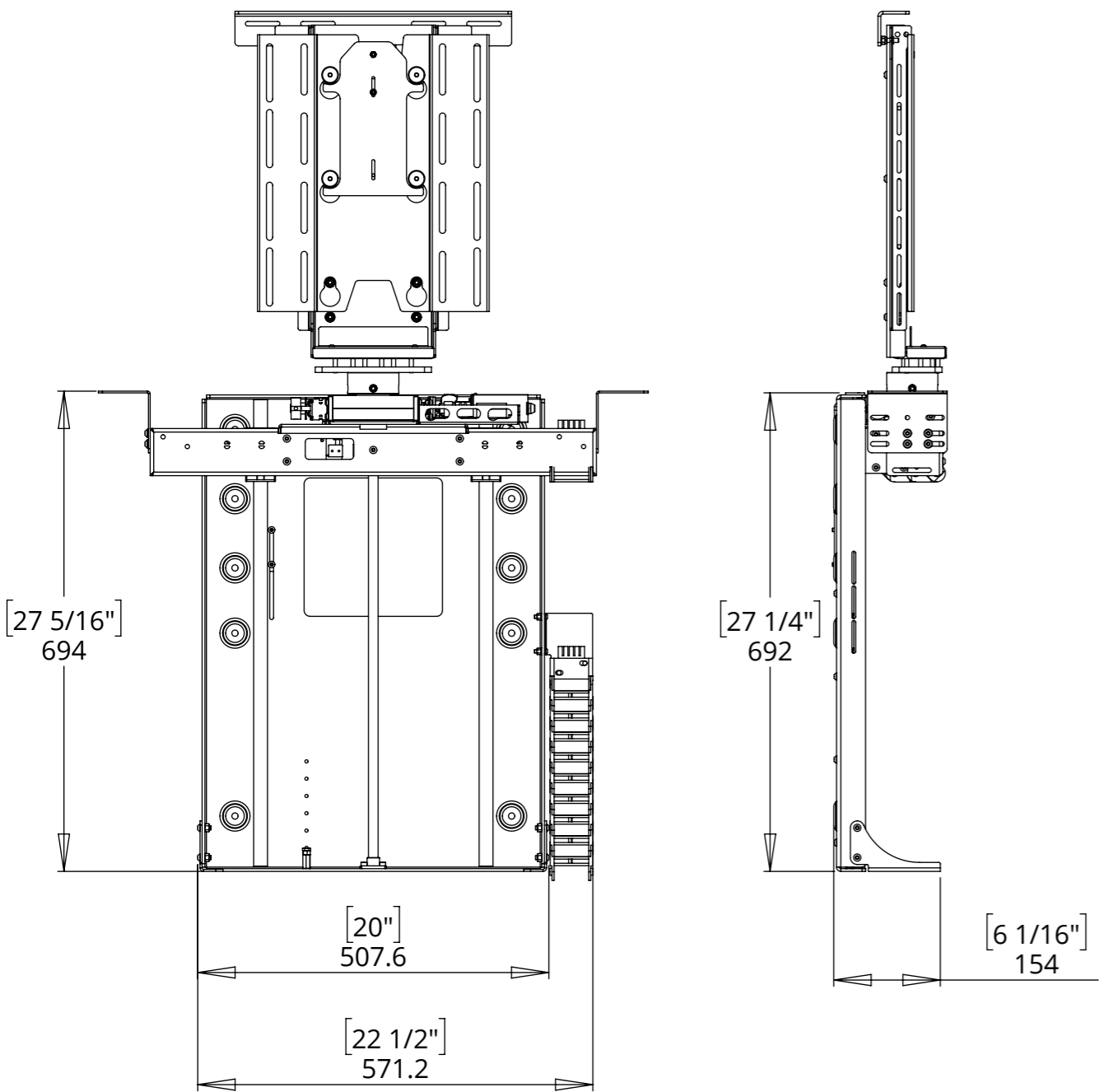


LSM-S-BE-2

LIFT SYSTEM SWIVEL FOR BOX ENCLOSURE

OVERALL MECHANISM DIMENSIONS

MECHANISM - UP POSITION



MECHANISM - DOWN POSITION

