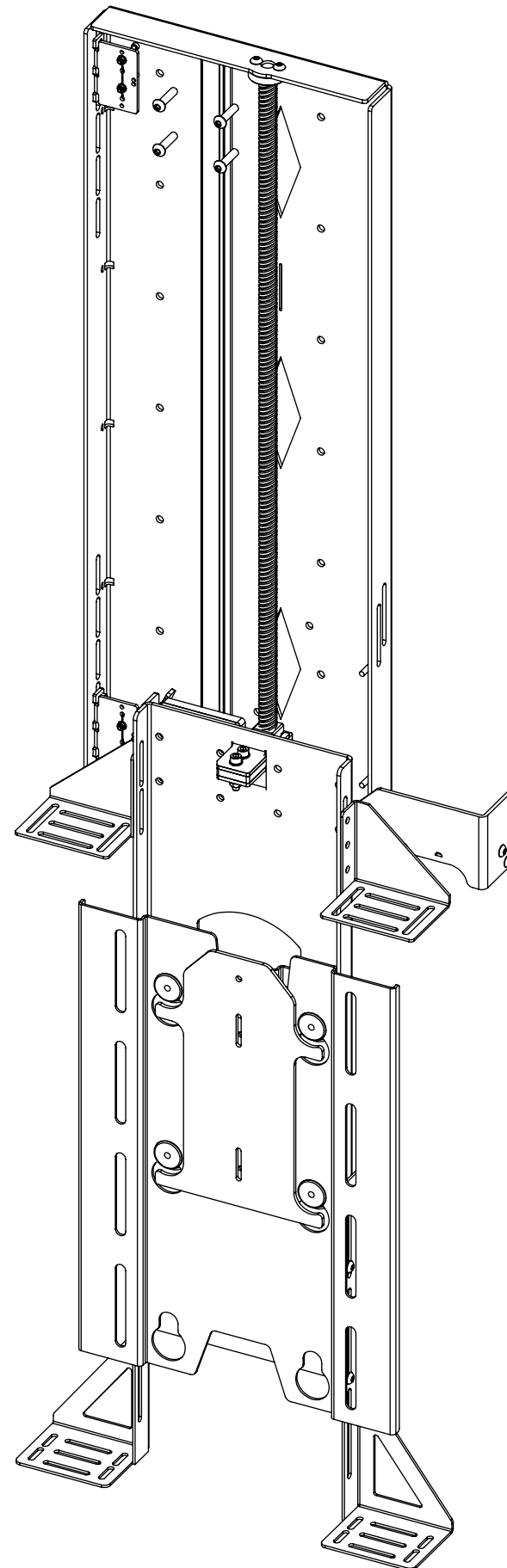


# I-LSL-BE 2

## INVERTED LIFT SYSTEM FOR BOX ENCLOSURE



future automation



# I-LSL-BE 2

## INVERTED LIFT SYSTEM FOR BOX ENCLOSURE



future automation

SPECIFICATION	MEASUREMENTS
Screen Sizes (Approx)	32" - 40"
Maximum Weight Capacity	25Kg (55lb)
Maximum Weight Capacity (Marine)	16Kg (35lb)
Maximum Screen Height	524mm (20.6")
Packaging Dimensions	920mm (36.2") x 550mm (21.7") x 250mm (9.8")
Shipping Weight	18Kg (40lb)
Movement Type	Motorised
Power Supply Required	110V or 240V AC
Power Consumption	250-500W
Power Consumption Standby	3W
Decibel Rating	58dB
Mounting Patterns Supported	VESA 200 W x 300, 200 H
Control Options	IR Remote, RS232, Contact Closure
Product Options / Features	Specific B&O and Loewe mounts / adapters, Custom RAL paint finishes, Outdoor version
Package Contents	Mechanism, IR remote control
Marine Suitable	Yes (Indoor)

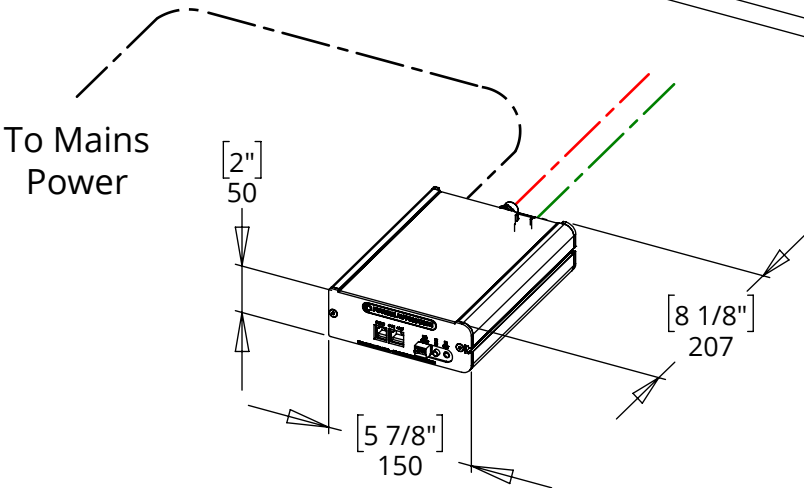
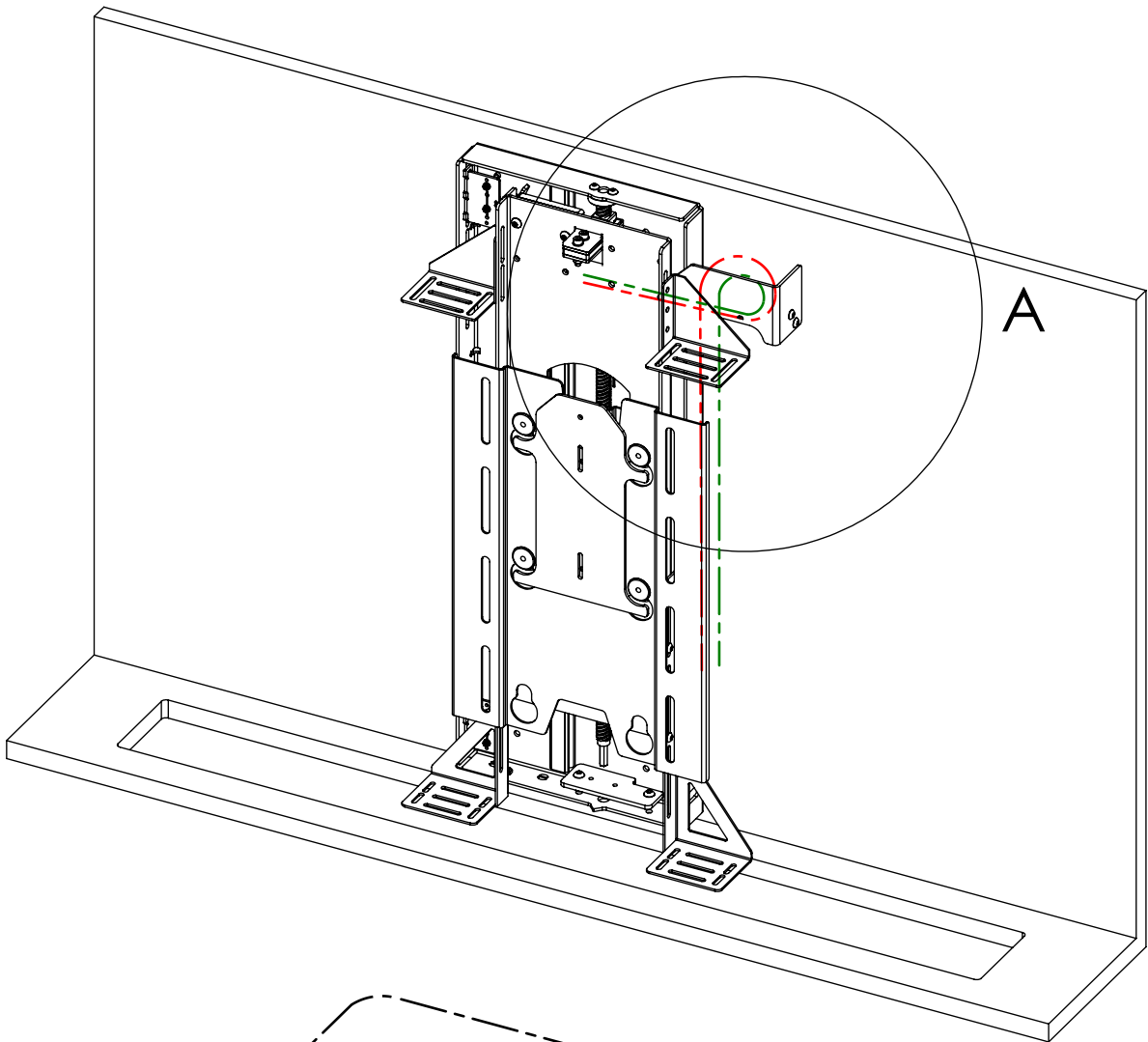
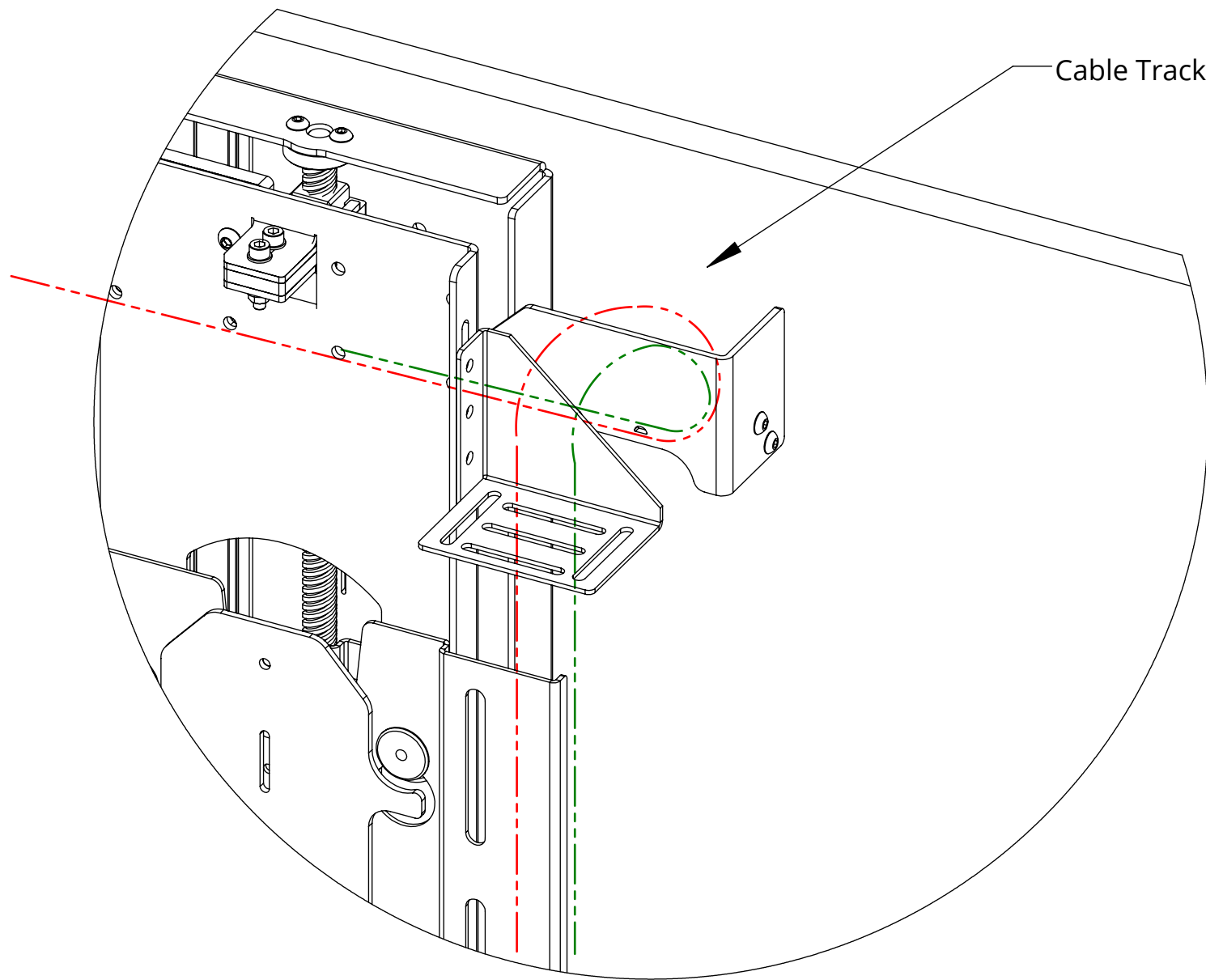
# I-LSL-BE 2

## INVERTED LIFT SYSTEM FOR BOX ENCLOSURE

### CABLE ROUTING

Screen cables are routed behind the Base Panel and out the right side of the Beam into the Cable Track. Cables must be routed carefully to prevent any interference with the LSL beam as it operates.

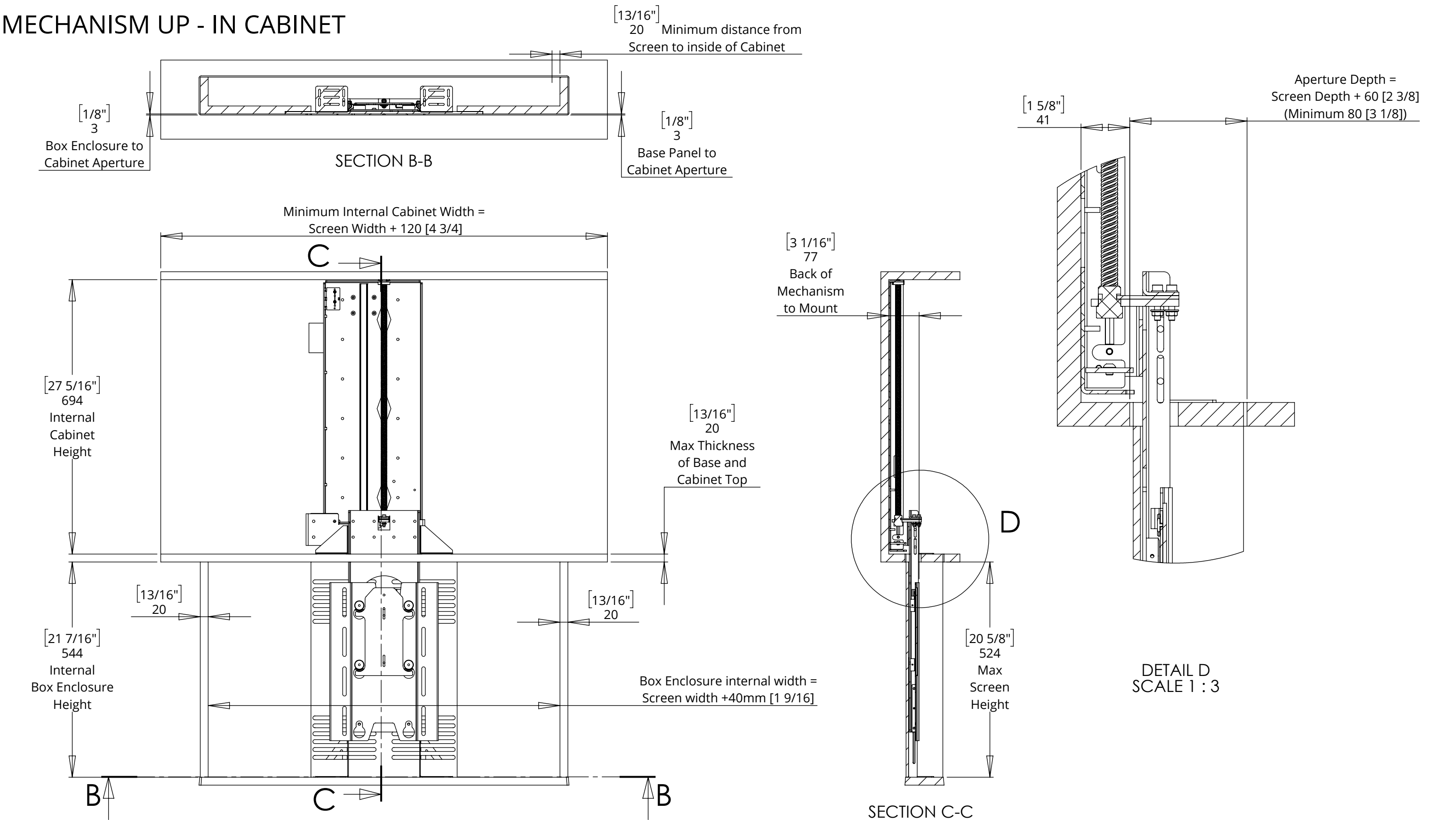
Screen and Mechanism cables should be routed to a control box in the bottom of the cabinet.



# I-LSL-BE 2

## INVERTED LIFT SYSTEM FOR BOX ENCLOSURE

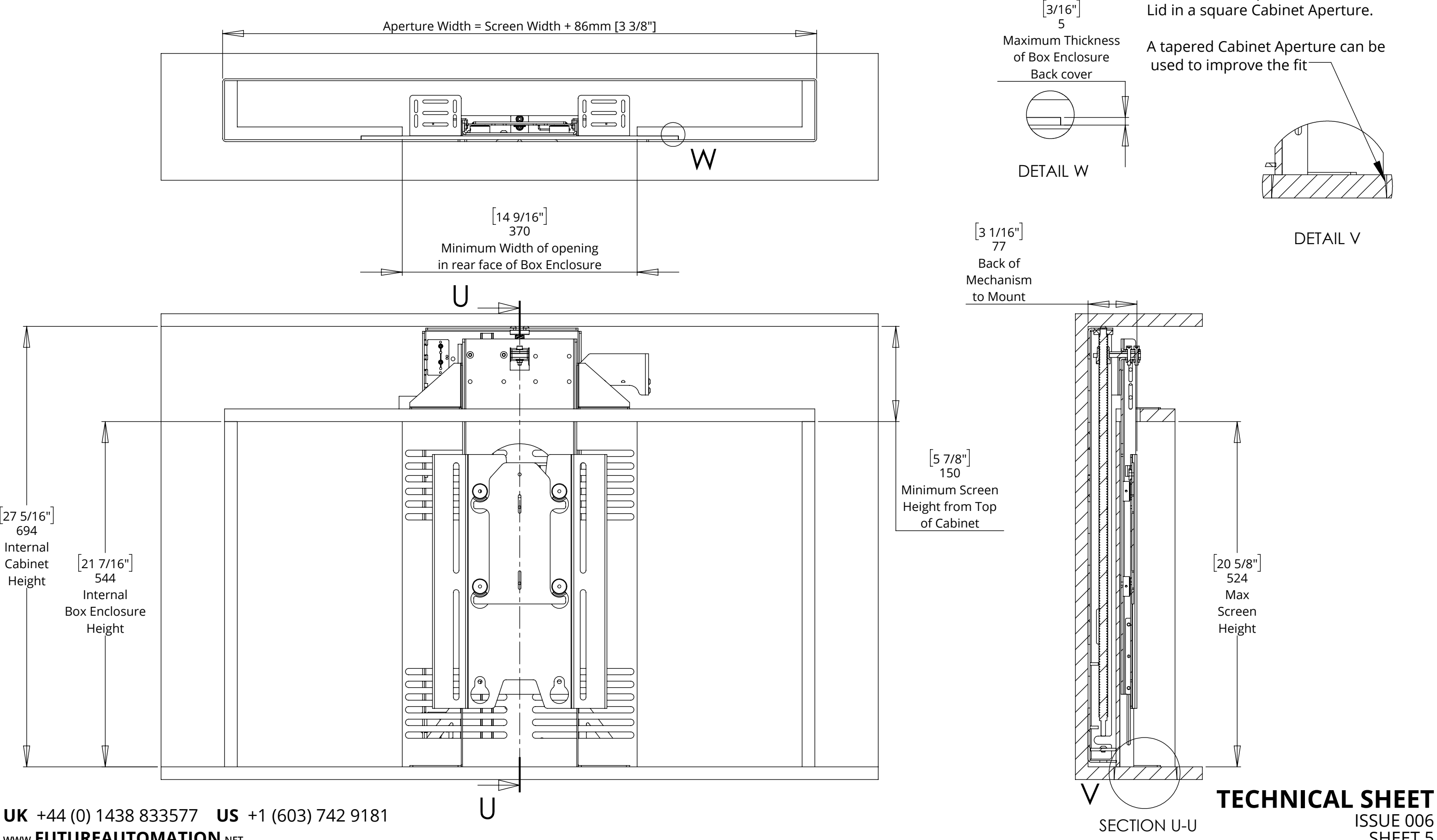
### MECHANISM UP - IN CABINET



# I-LSL-BE 2

## INVERTED LIFT SYSTEM FOR BOX ENCLOSURE

### MECHANISM DOWN - IN CABINET



# I-LSL-BE 2

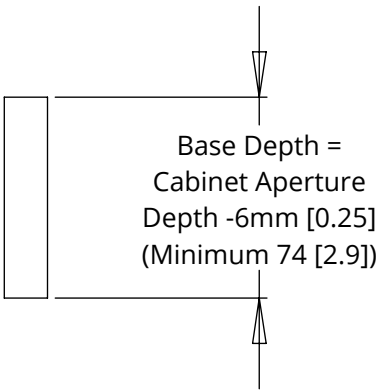
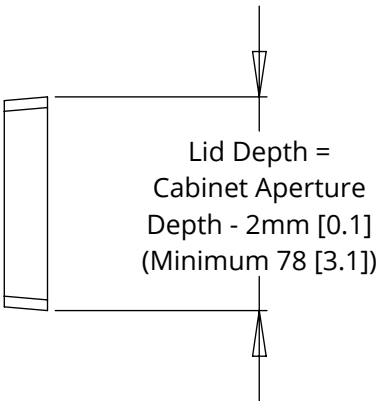
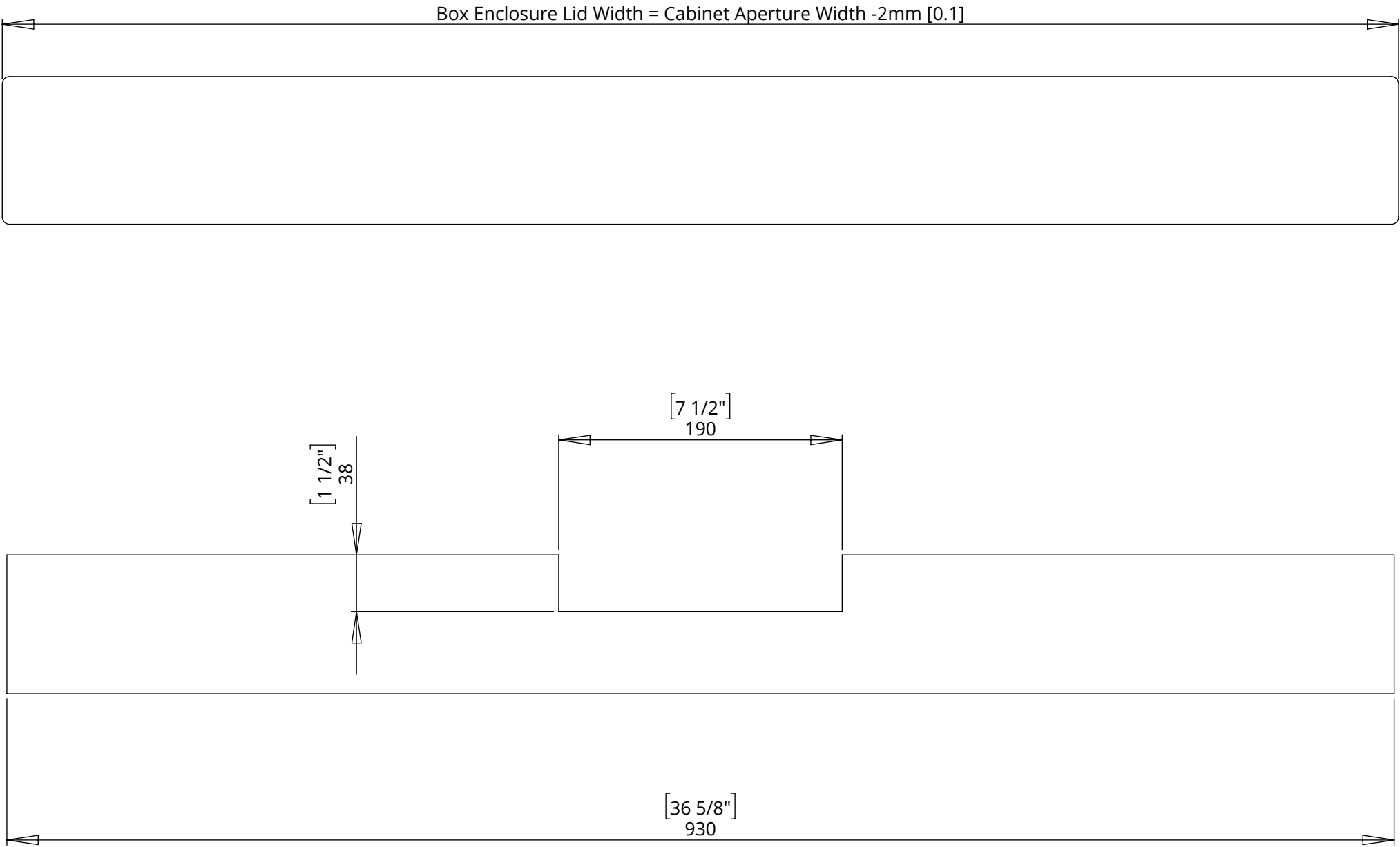
## INVERTED LIFT SYSTEM FOR BOX ENCLOSURE



future automation

### BASE PANEL & ENCLOSURE LID DETAILS

NOTE: A tapered Box Enclosure Lid creates a good fit in the Cabinet Aperture and helps the Box Enclosure to locate within the Cabinet.

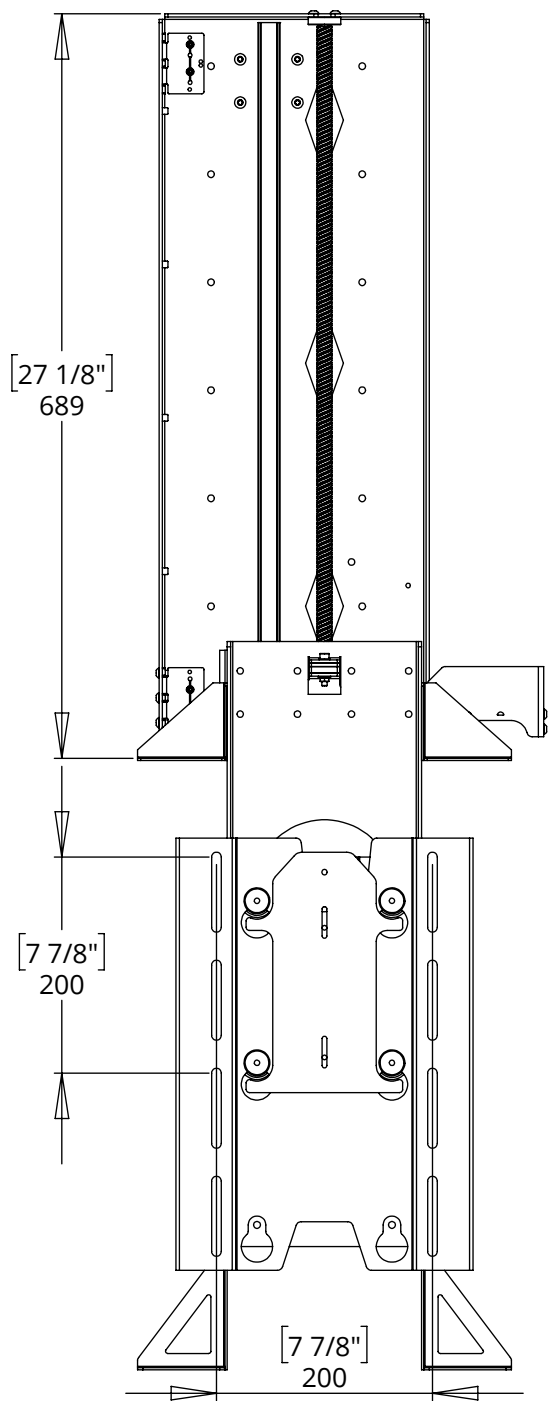


# I-LSL-BE 2

## INVERTED LIFT SYSTEM FOR BOX ENCLOSURE

### OVERALL MECHANISM DIMENSIONS

MECHANISM DOWN



MECHANISM UP

