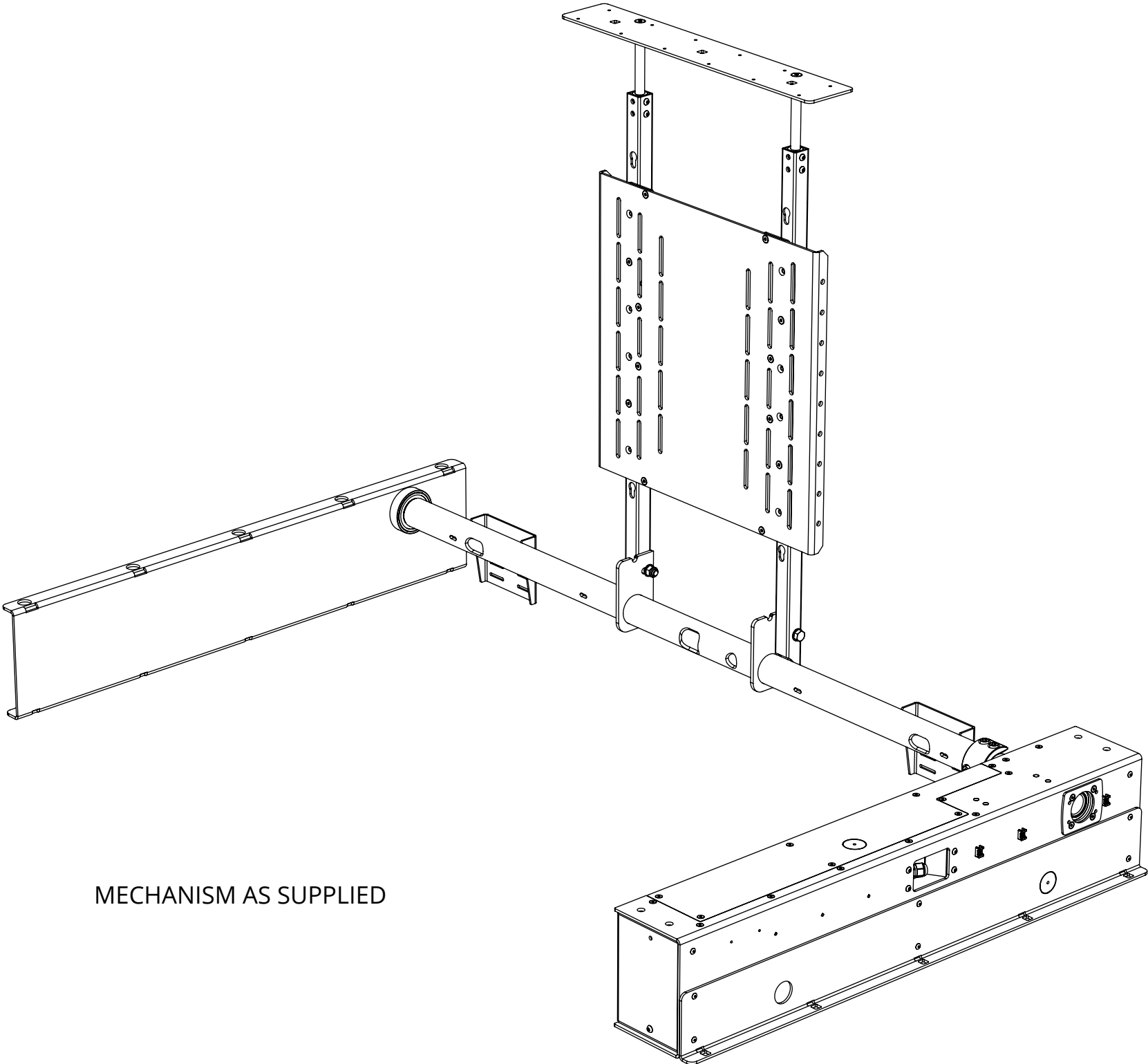
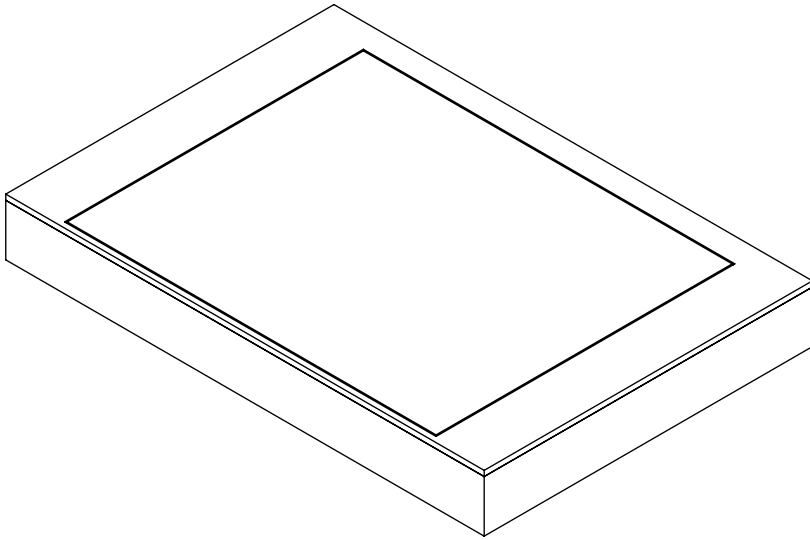
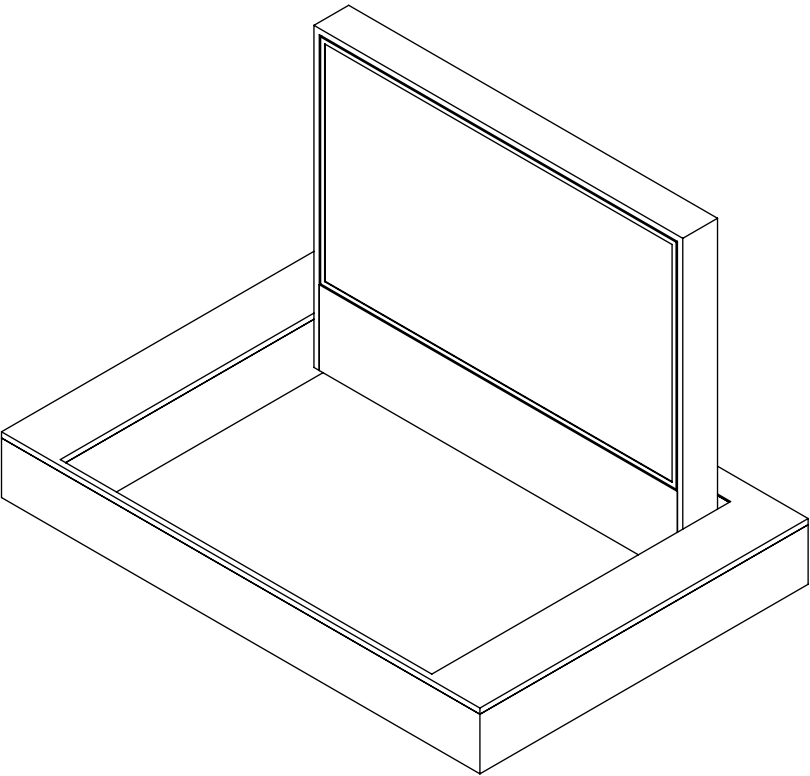


# HU5

## HINGE UP MECHANISM



MECHANISM AS SUPPLIED



# HU5

## HINGE UP MECHANISM

SPECIFICATION	MEASUREMENTS
Product Dimensions	1635mm (64.4") W x 1113mm (43.8") L x 190mm (7.5") H
Maximum Screen Size	1330mm (52.4") W x 800mm (31.5") L x 65mm (2.6") T
Maximum Weight Capacity	50Kg (110lb) INC CABINET WEIGHT
Product Weight	40Kg (88lbs)
Maximum Rotation	90°
Movement Type	Motorised
Control System	Control box with 3m [10'] loom - can be customised to suit installation
Power Supply Required	110V - 240V AC
Power Consumption Max.	120W
Power Consumption Standby	3W
Mounting Patterns Supported	VESA 400, 300, 200 W x 400, 300, 200 H
Control Options	IR Remote, RS232, Contact Closure
Product Options / Features	Specific B&O and Loewe mounts / adapters, Custom RAL paint finishes, Marine suitable version
Package Contents	Mechanism, IR remote control
Marine Suitable	No

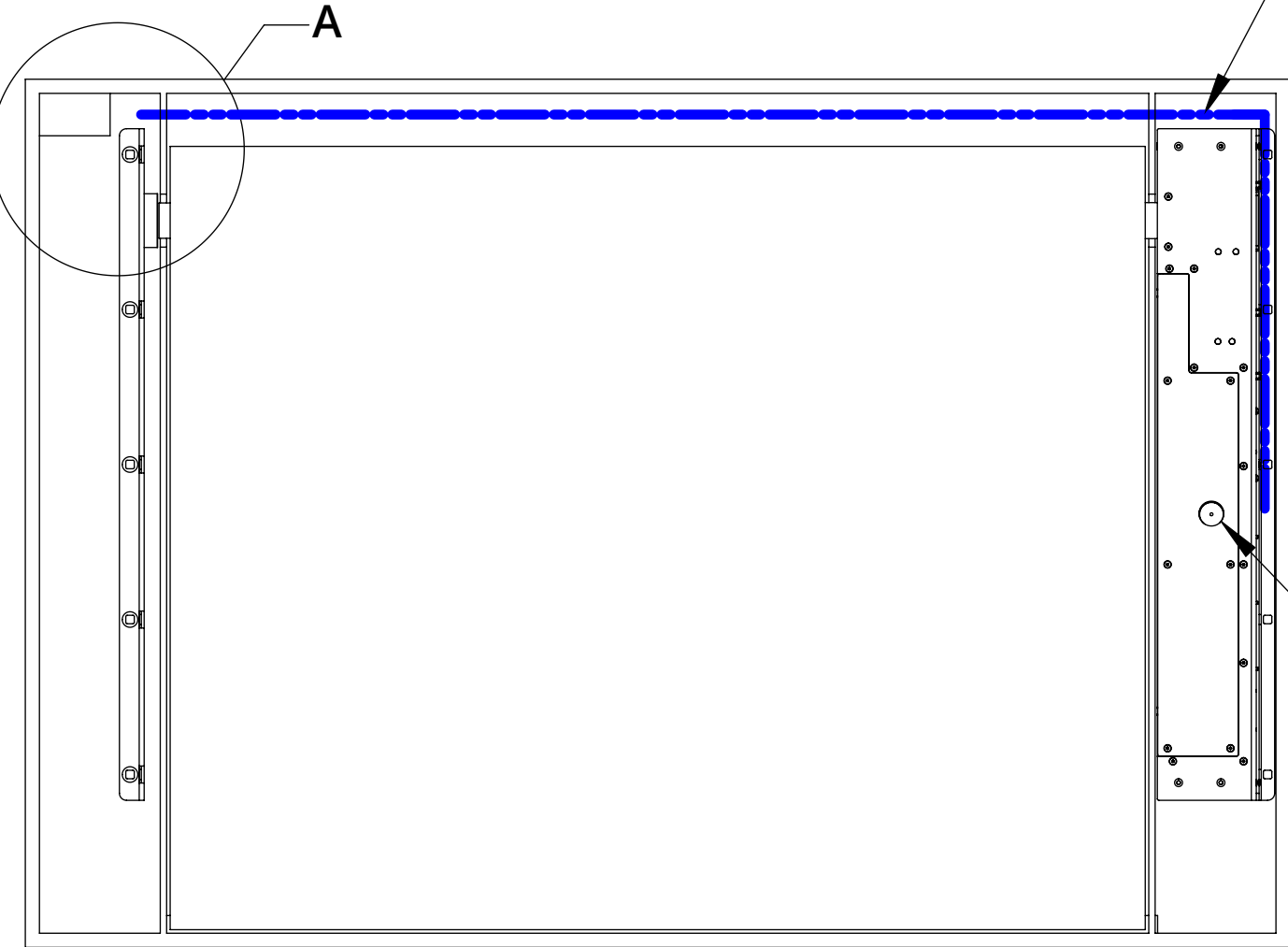
# HU5

## HINGE UP MECHANISM



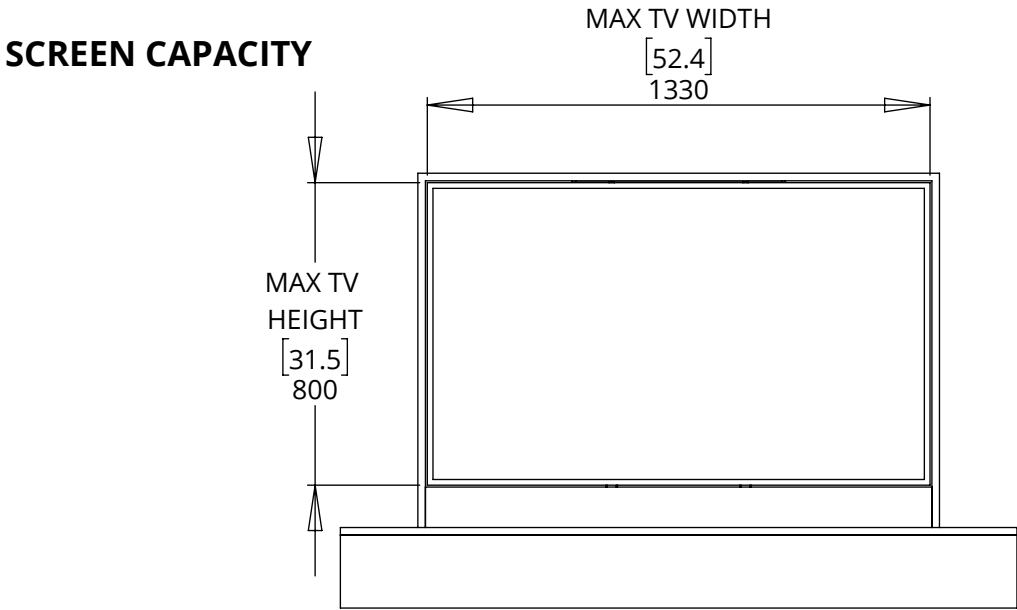
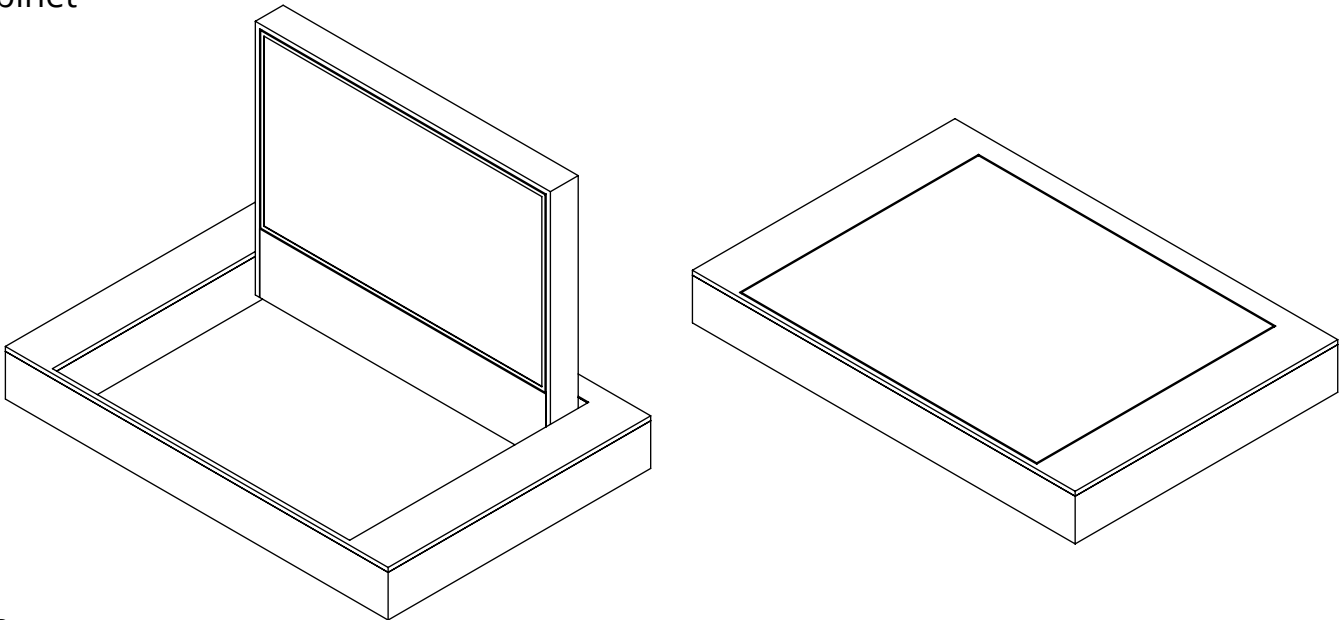
future automation

### MECHANISM OVERVIEW



Cable loom can be run to either side of cabinet

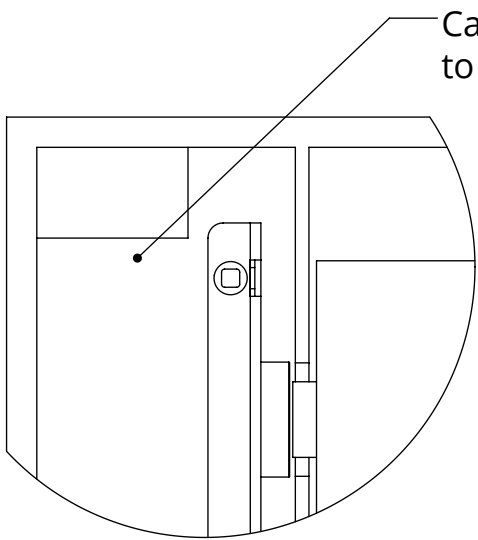
Down limit switch adjuster accessible via open port from above (removable plug creates seal) Ensure access is maintained to this area at all times.



### SCREEN CAPACITY

MAX TV WIDTH  
[52.4]  
1330

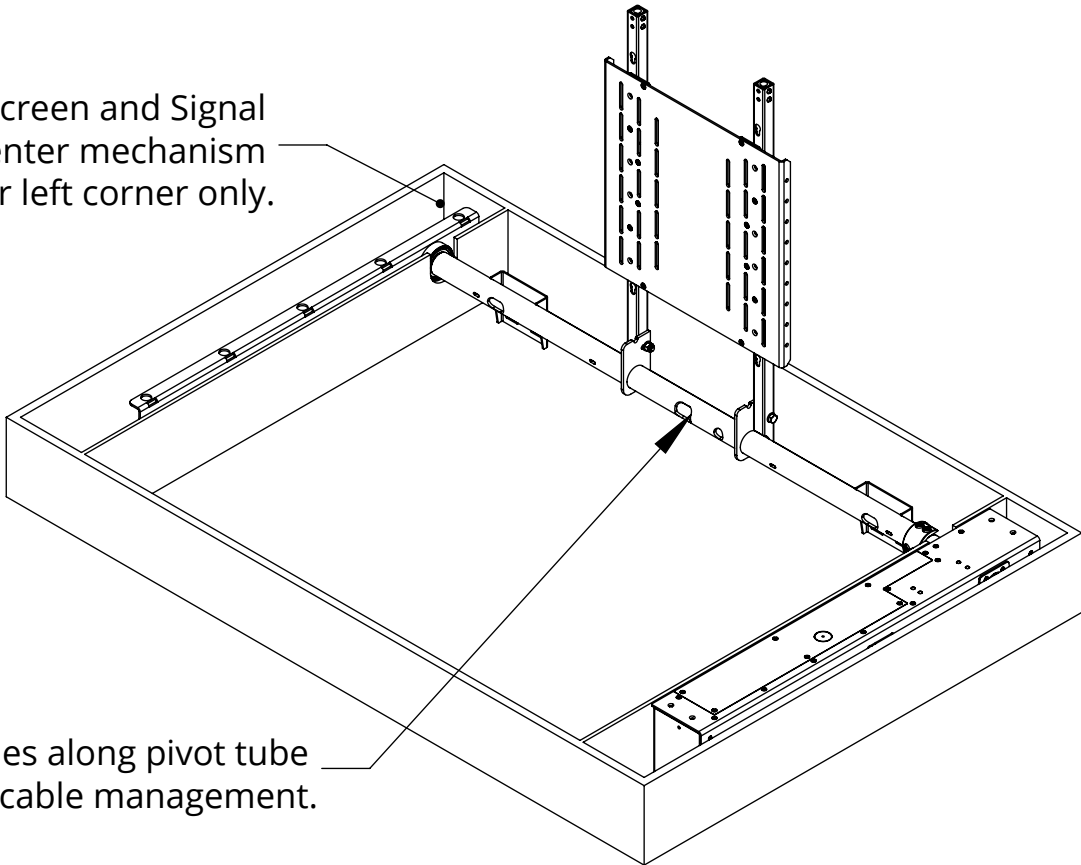
MAX TV HEIGHT  
[31.5]  
800



Cable Exit / Entry to back corner.

DETAIL A  
SCALE 1 : 5

Screen and Signal cables enter mechanism at rear left corner only.

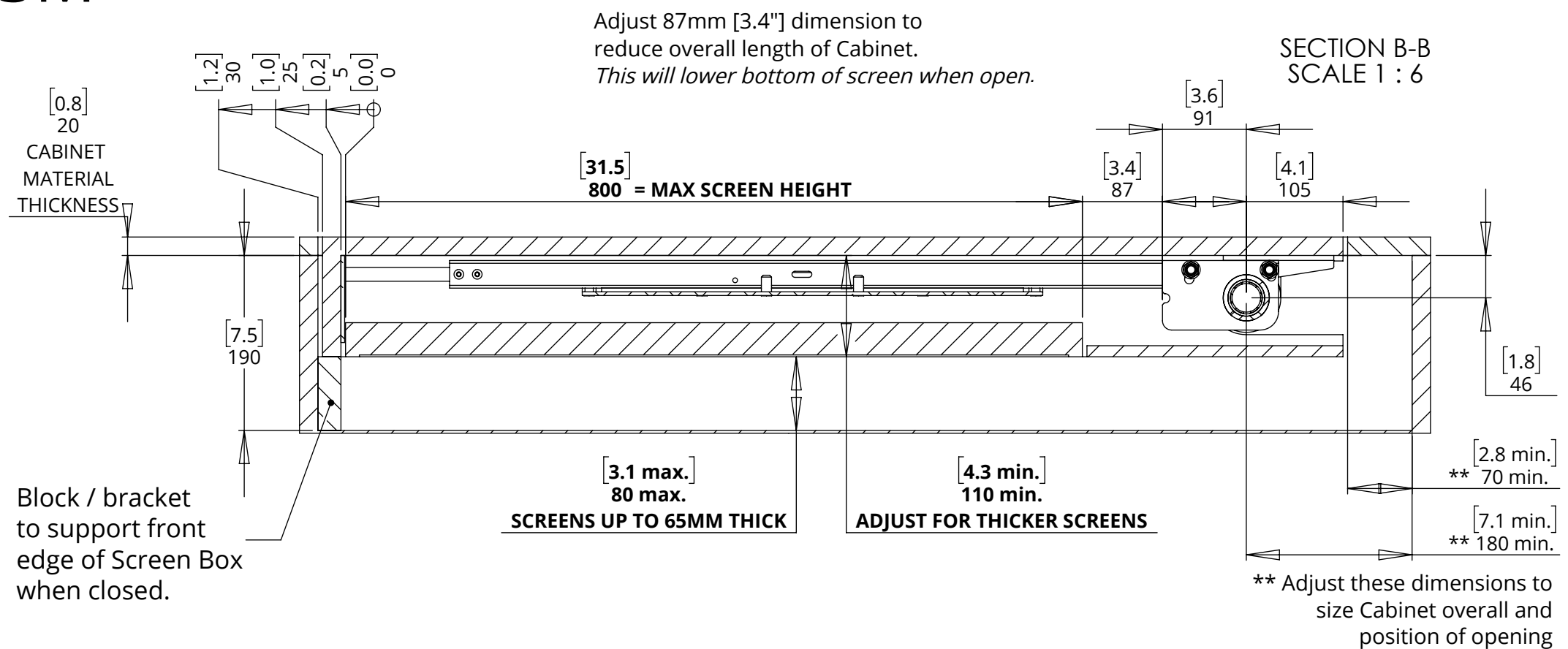
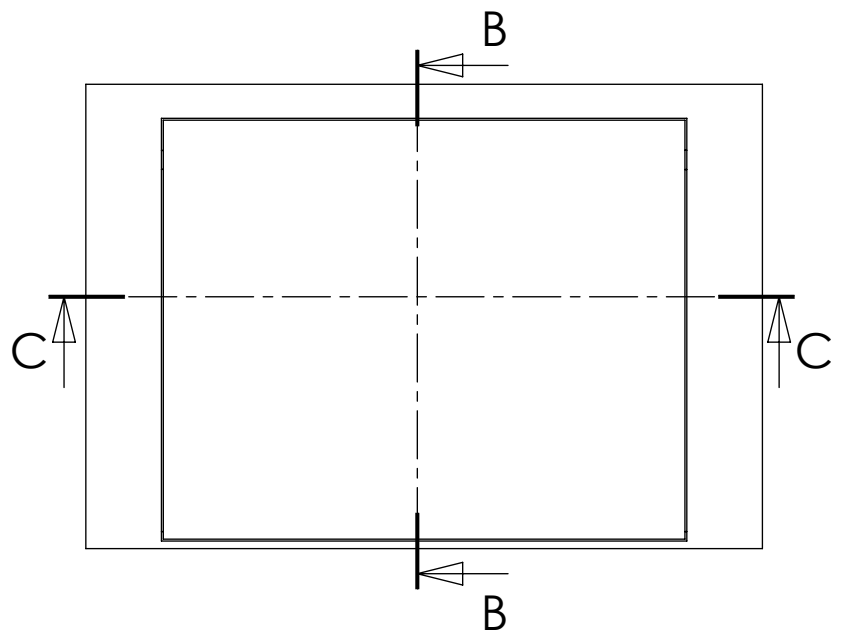


Cable Exit holes along pivot tube for easy cable management.

# HU5

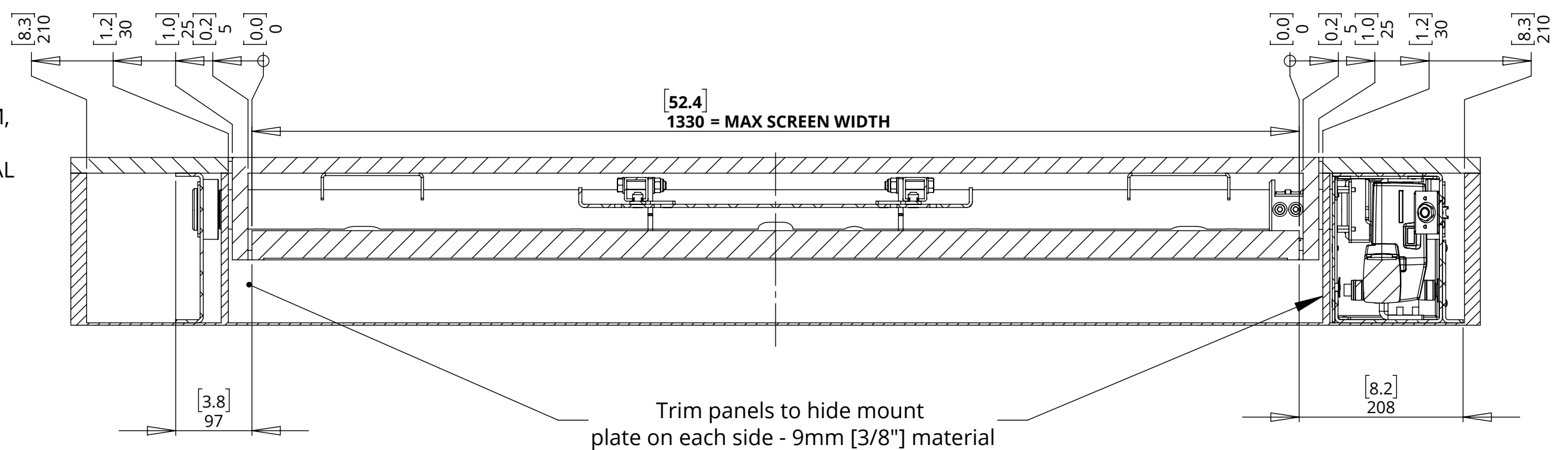
## HINGE UP MECHANISM

### INSTALLATION DIMENSIONS



NOTE : CABINET MATERIAL THICKNESS SHOWN IS 20MM, ADJUST DIMENSIONS TO SUIT DIFFERENT MATERIAL

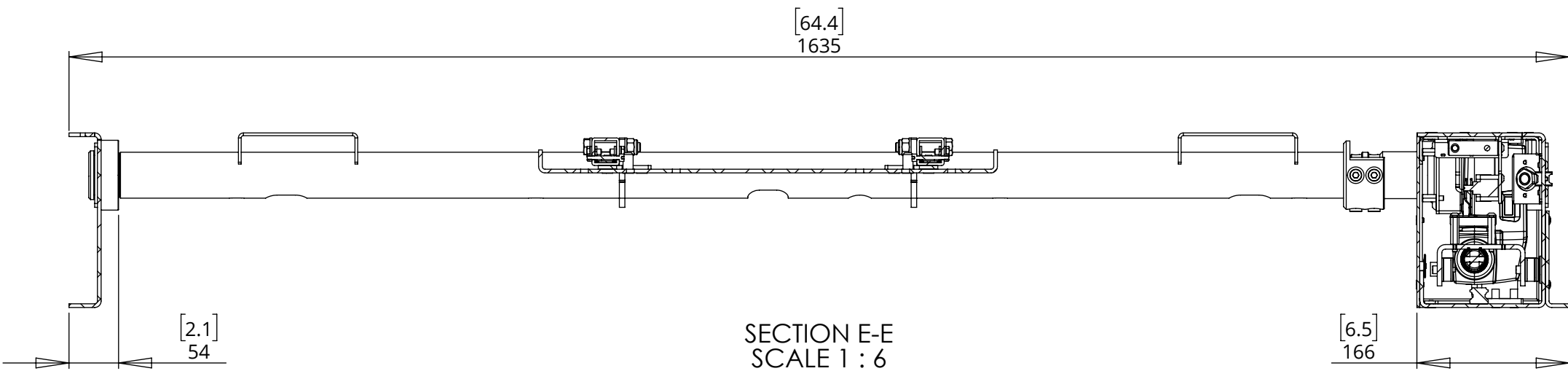
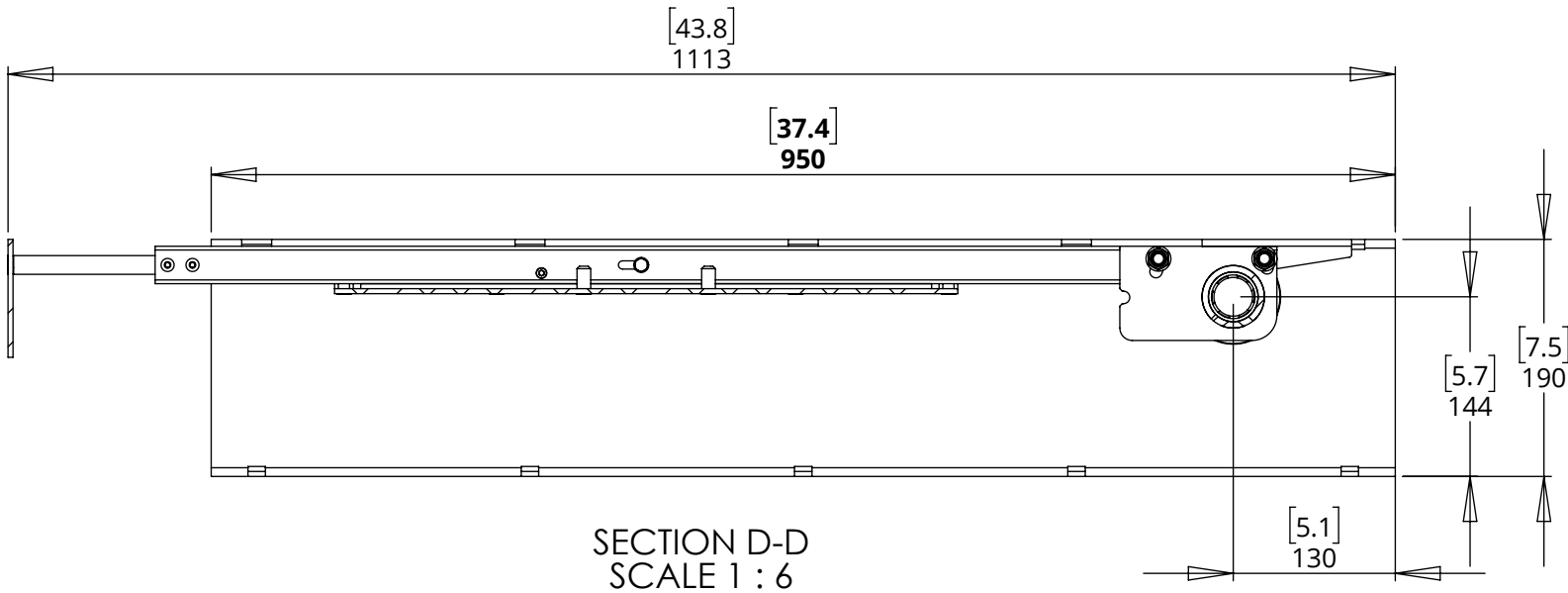
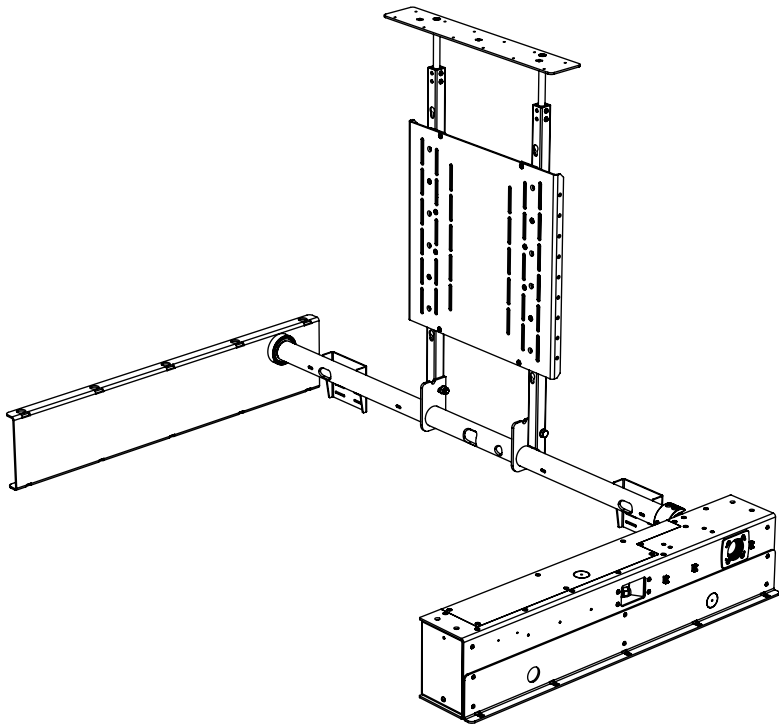
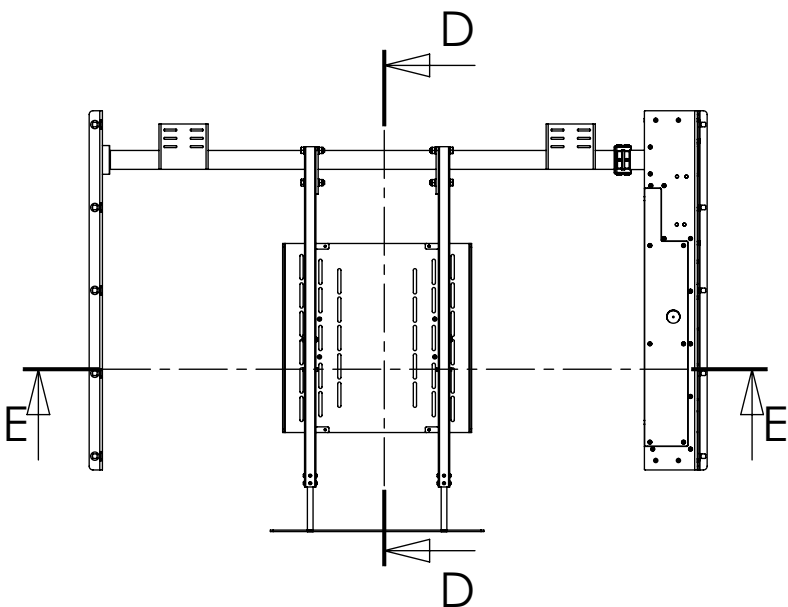
DIMENSIONS SHOWN HERE FOR THE SMALLEST SYMMETRICAL CABINET



# HU5

## HINGE UP MECHANISM

### MECHANISM DIMENSIONS

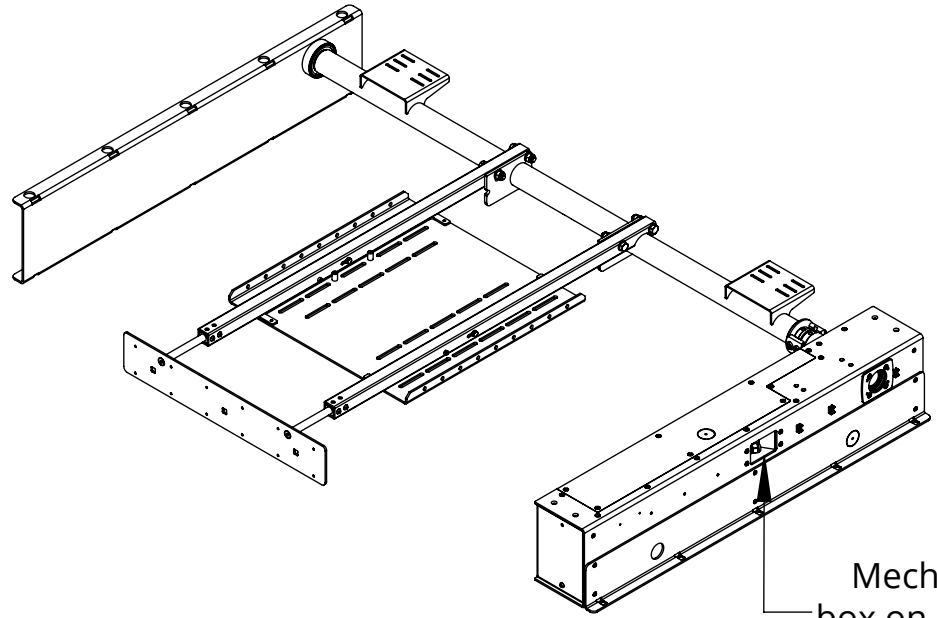


# HU5

## HINGE UP MECHANISM

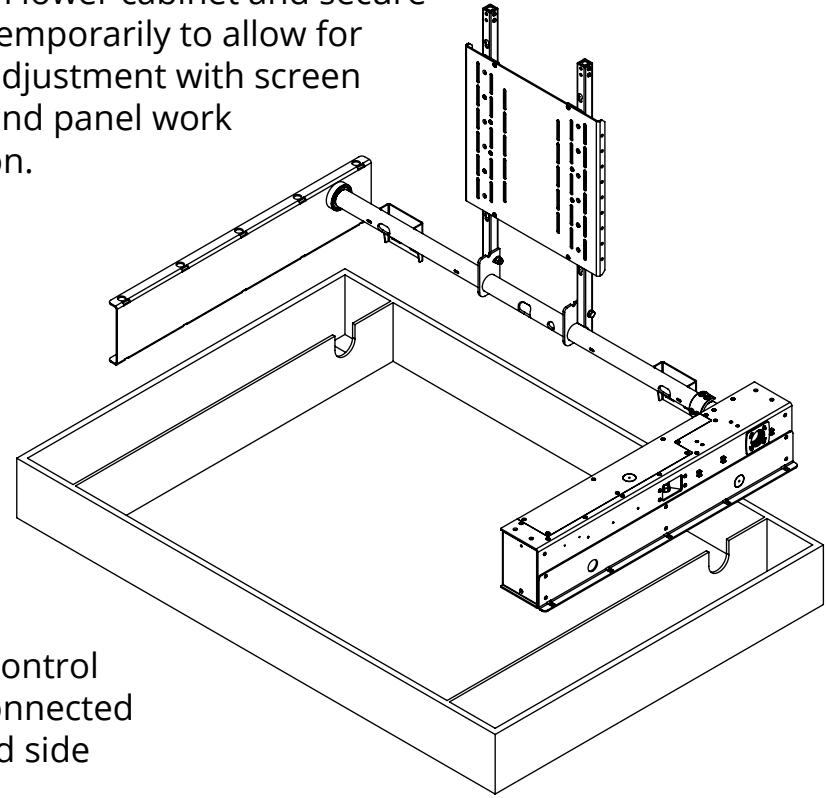
### INSTALLATION

1. Power mechanism and test operation before installation.

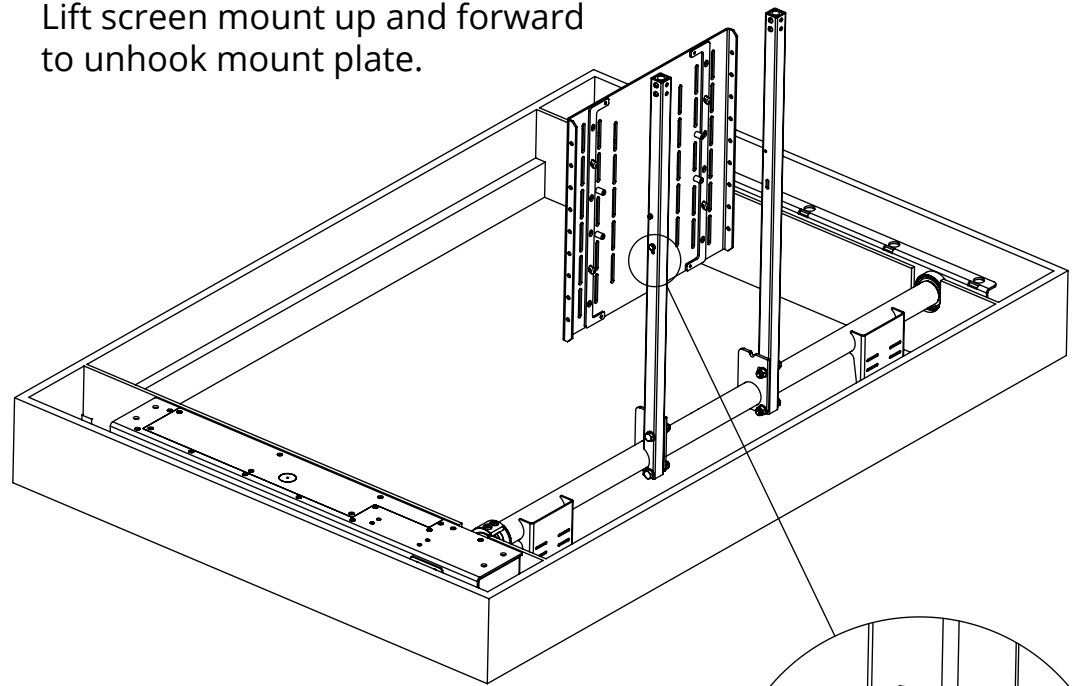


Mechanism control box on loom connected on right hand side

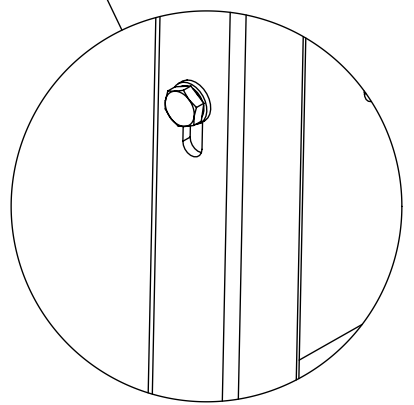
2. Lower mechanism into position in lower cabinet and secure temporarily to allow for adjustment with screen and panel work on.



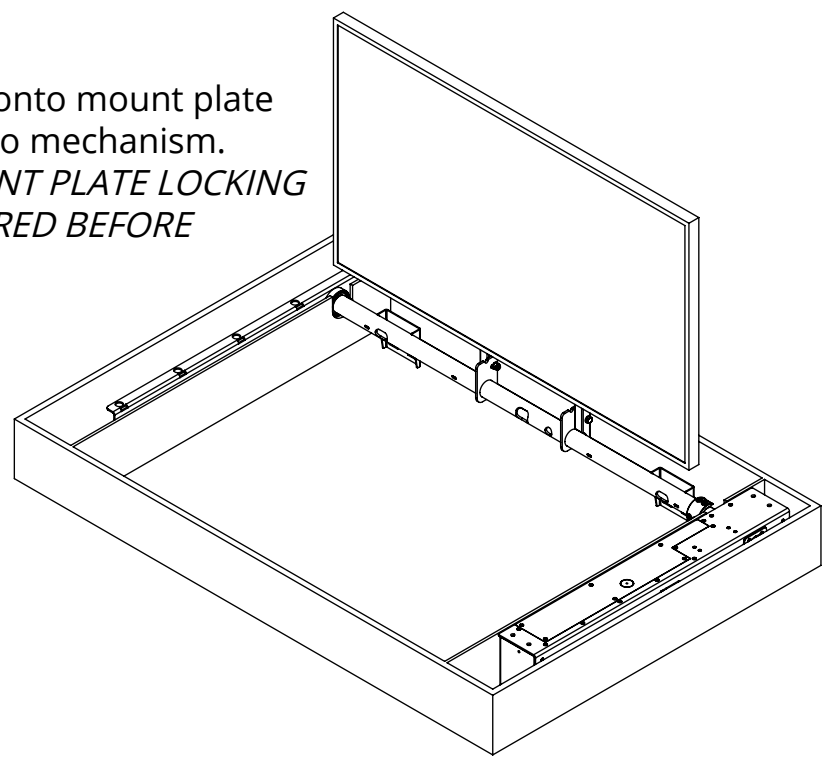
3. Loosen screen mount locking bolt on side of BOTH legs. Lift screen mount up and forward to unhook mount plate.



DETAIL F  
SCALE 1 : 2

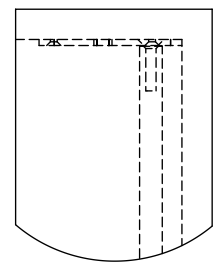
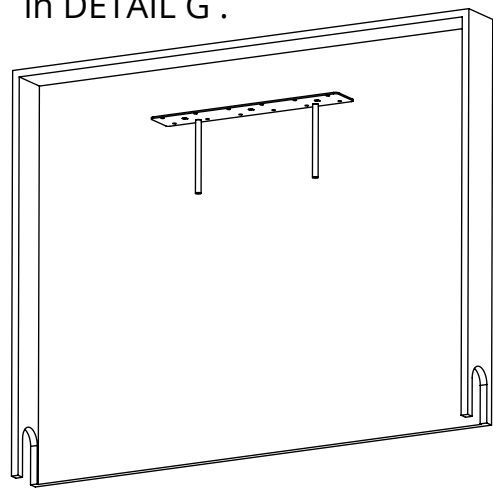


4. Install screen onto mount plate and install onto mechanism. *ENSURE MOUNT PLATE LOCKING BOLT IS SECURED BEFORE CONTINUING*

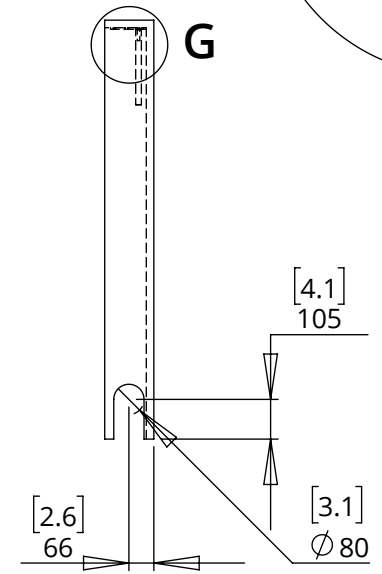


5. Install Box Plate onto Screen Box.

Ensure Box Plate is positioned centrally, with back edge of plate against inside of Screen Box as shown in DETAIL G .



DETAIL G  
SCALE 1 : 5

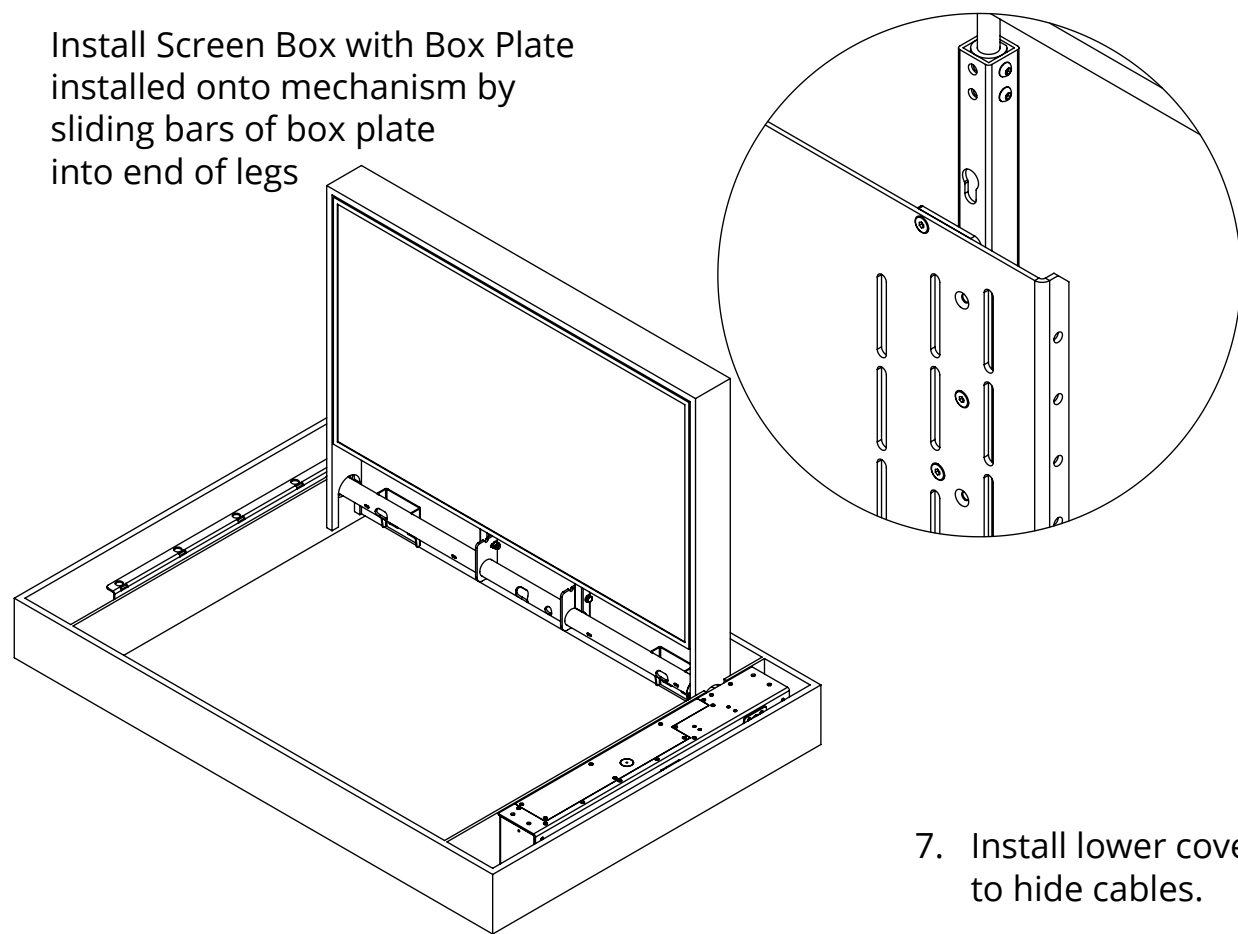


# HU5

## HINGE UP MECHANISM

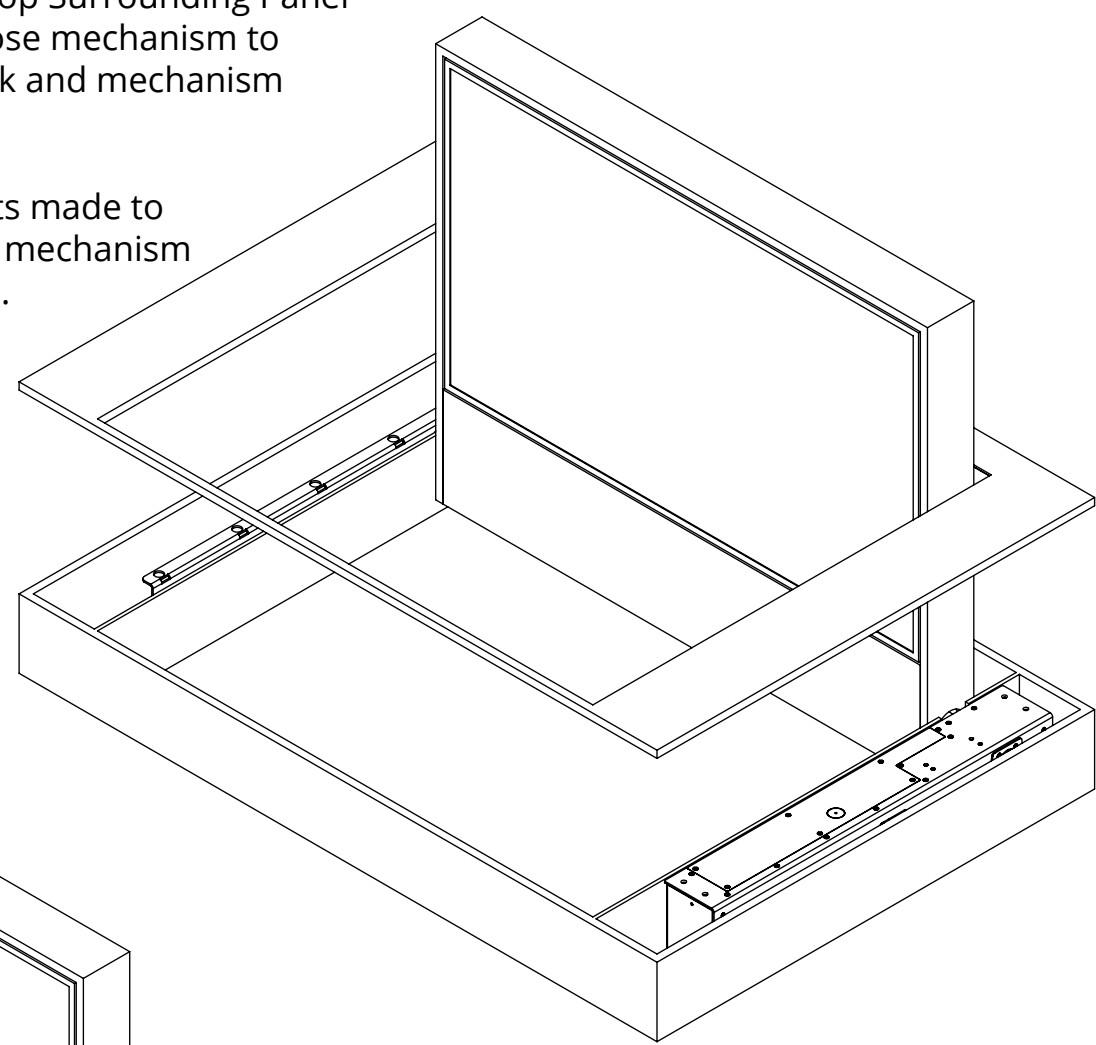
### INSTALLATION - Continued

6. Install Screen Box with Box Plate installed onto mechanism by sliding bars of box plate into end of legs



8. Install removable Top Surrounding Panel temporarily and close mechanism to check all panel work and mechanism positions.

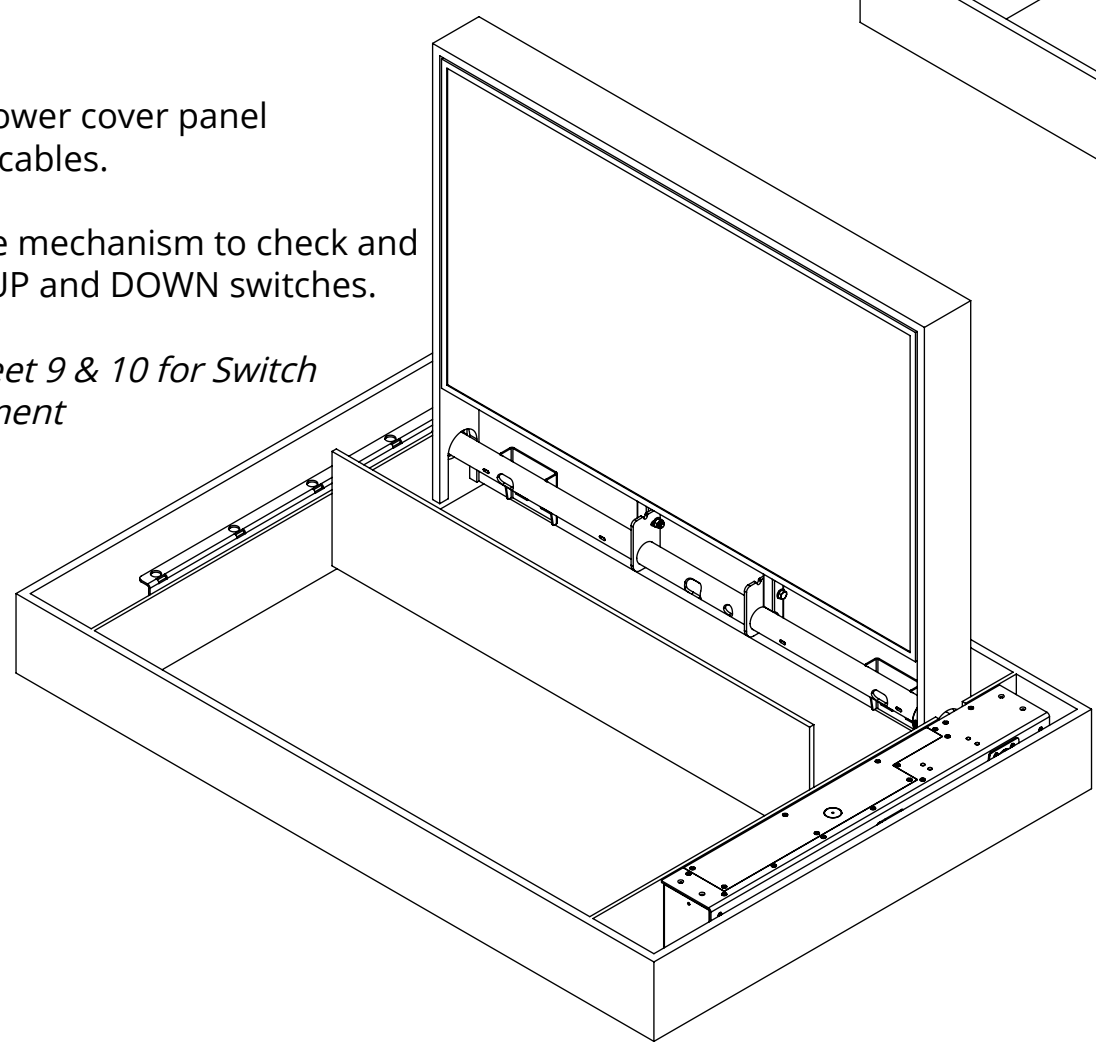
With all adjustments made to positioning, secure mechanism and panels in place.



7. Install lower cover panel to hide cables.

Operate mechanism to check and adjust UP and DOWN switches.

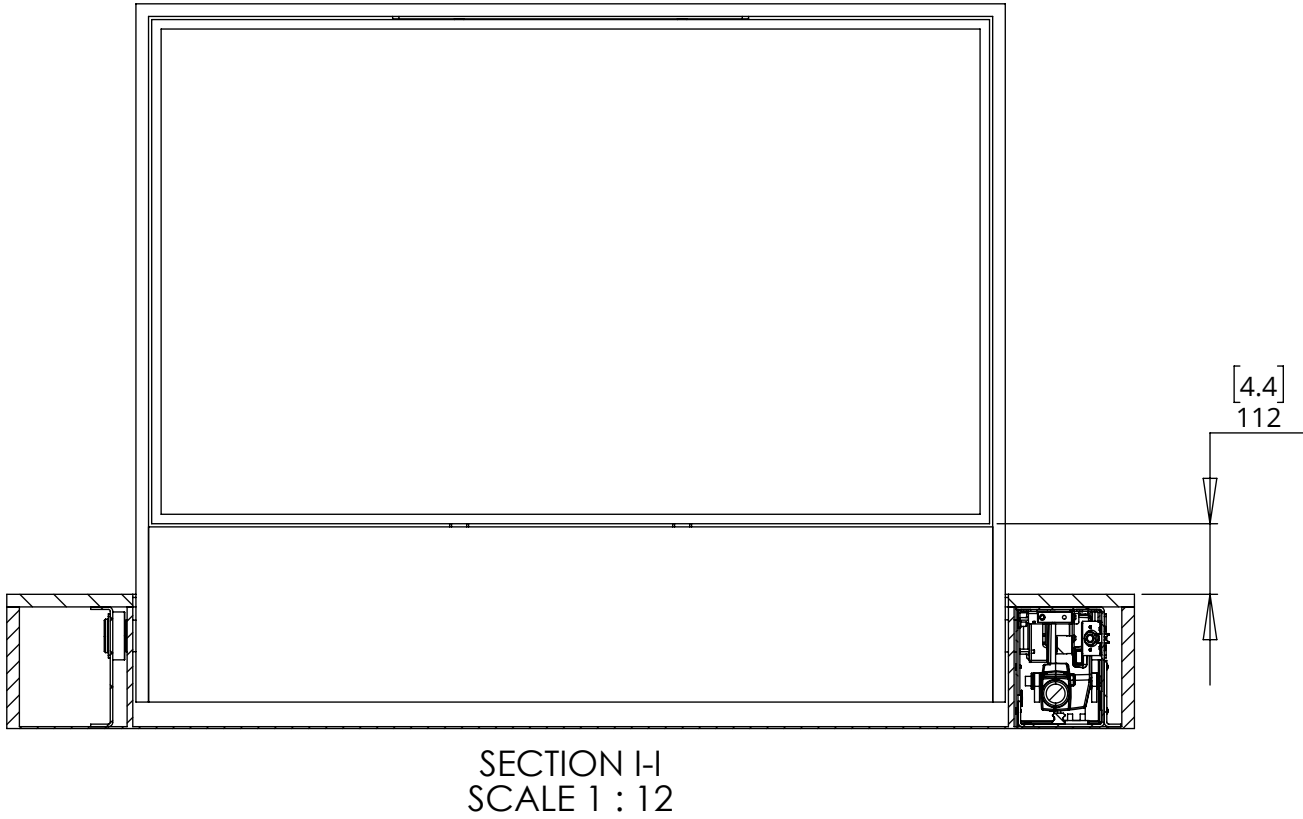
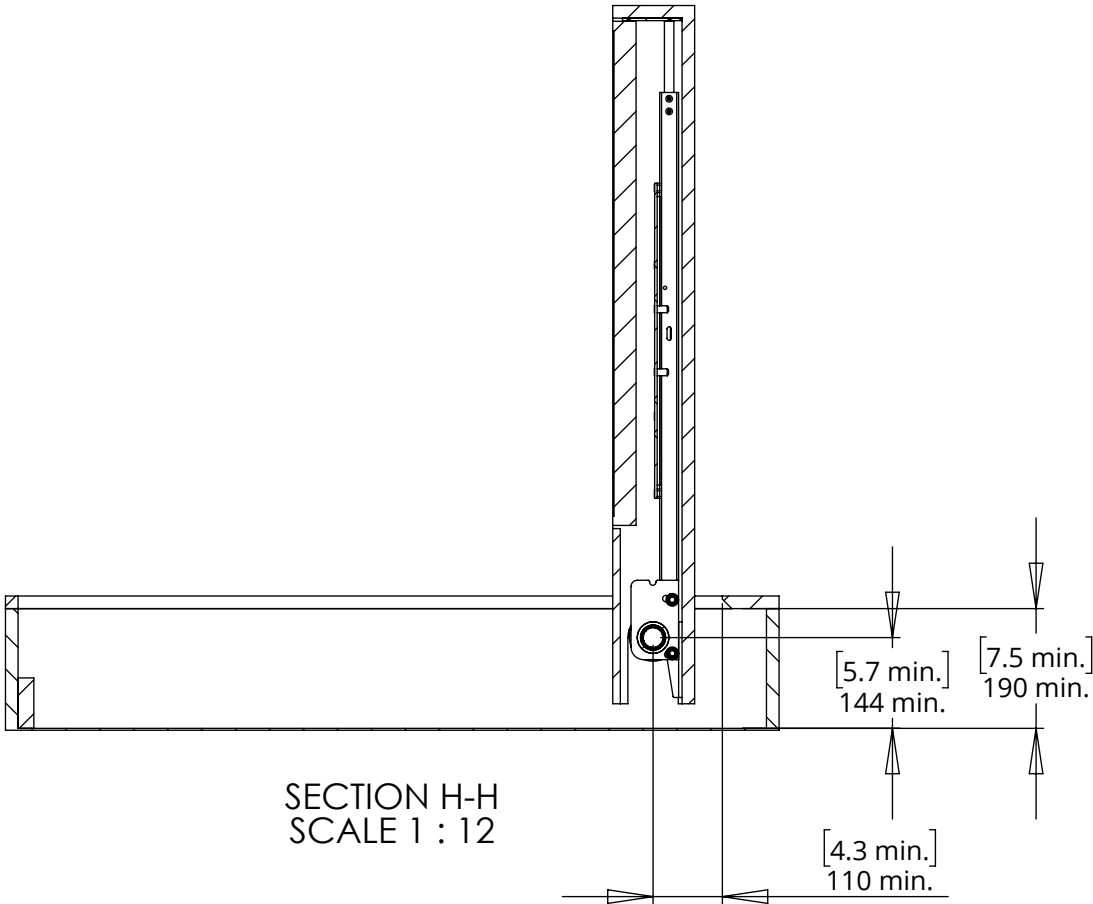
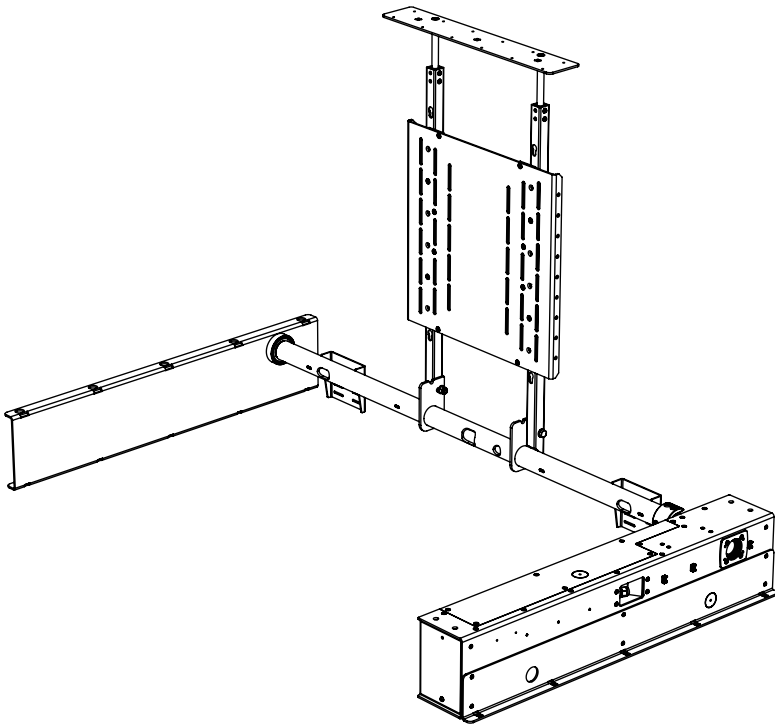
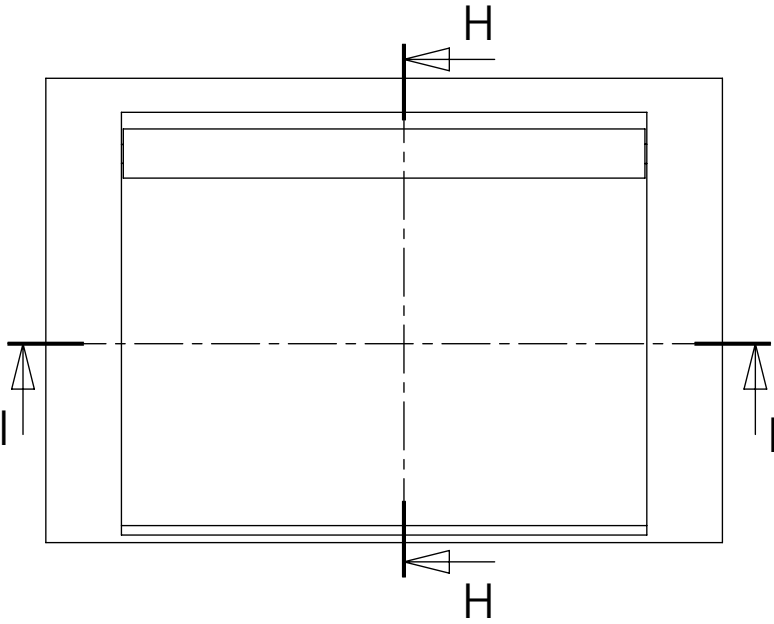
*See Sheet 9 & 10 for Switch Adjustment*



# HU5

## HINGE UP MECHANISM

### MECHANISM DIMENSIONS



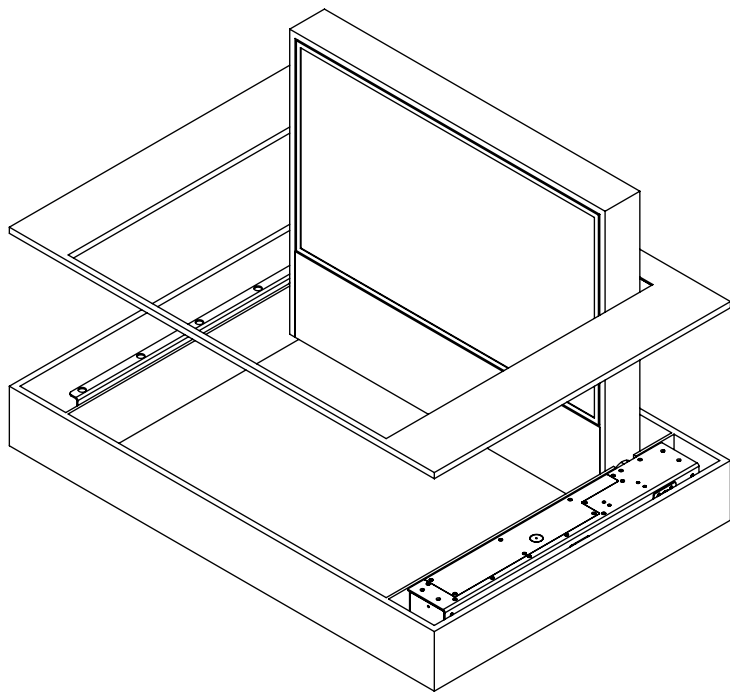


# HU5

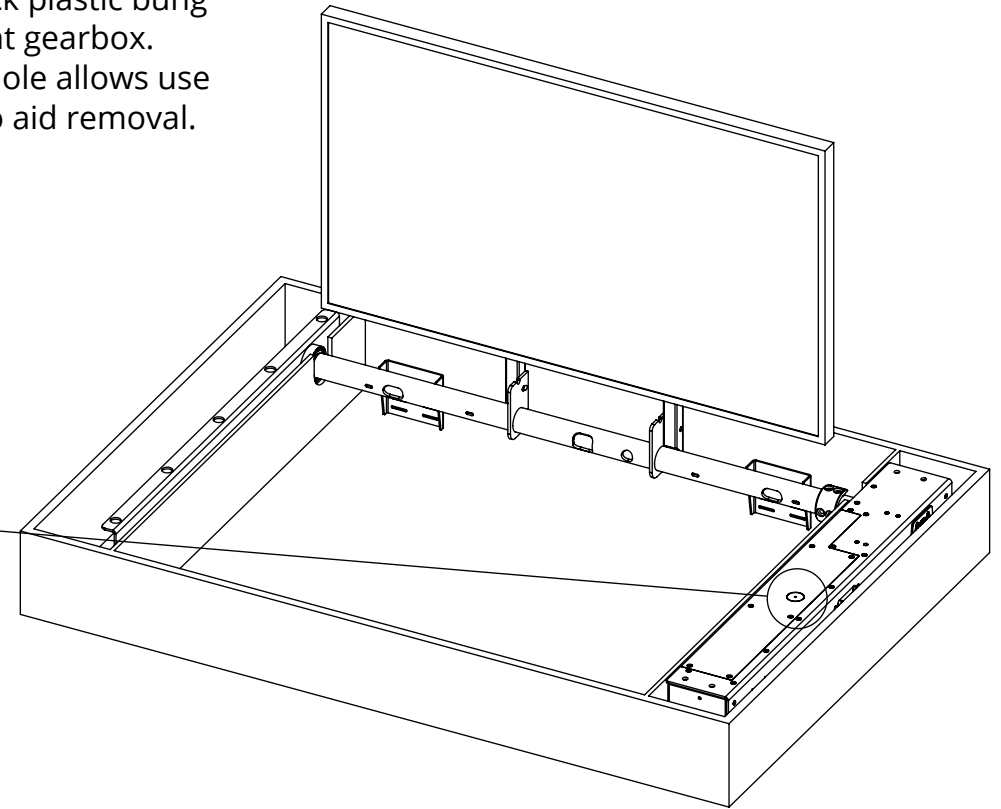
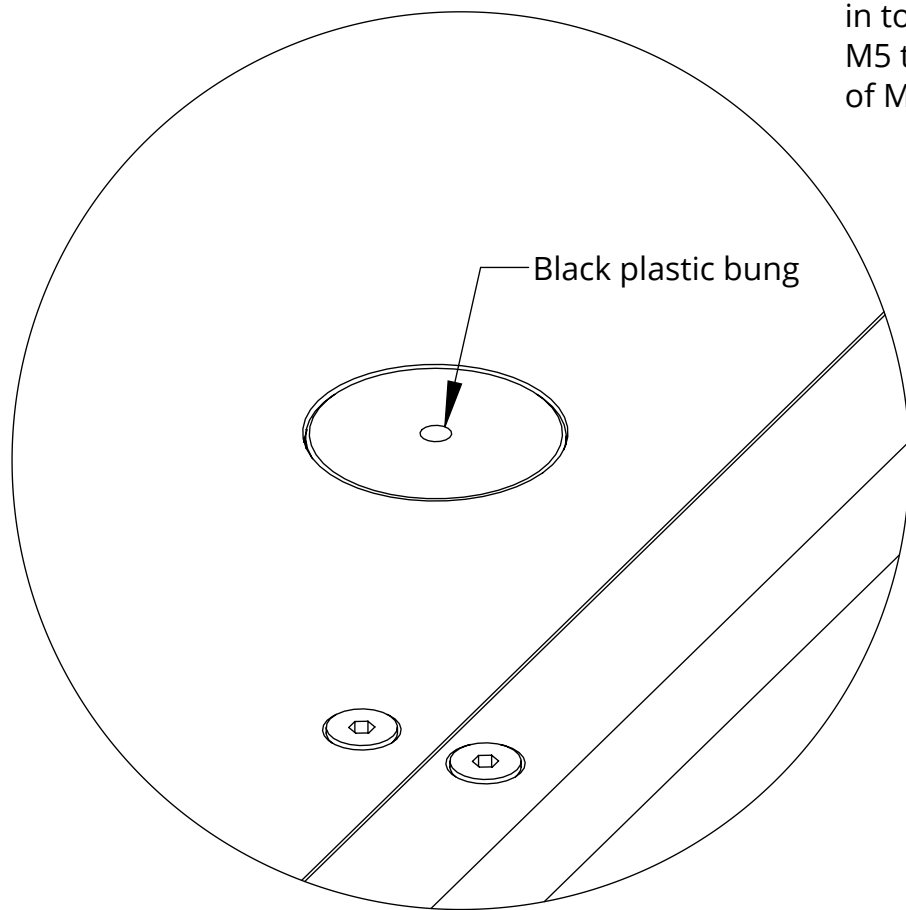
## HINGE UP MECHANISM

### DOWN SWITCH ADJUSTMENT

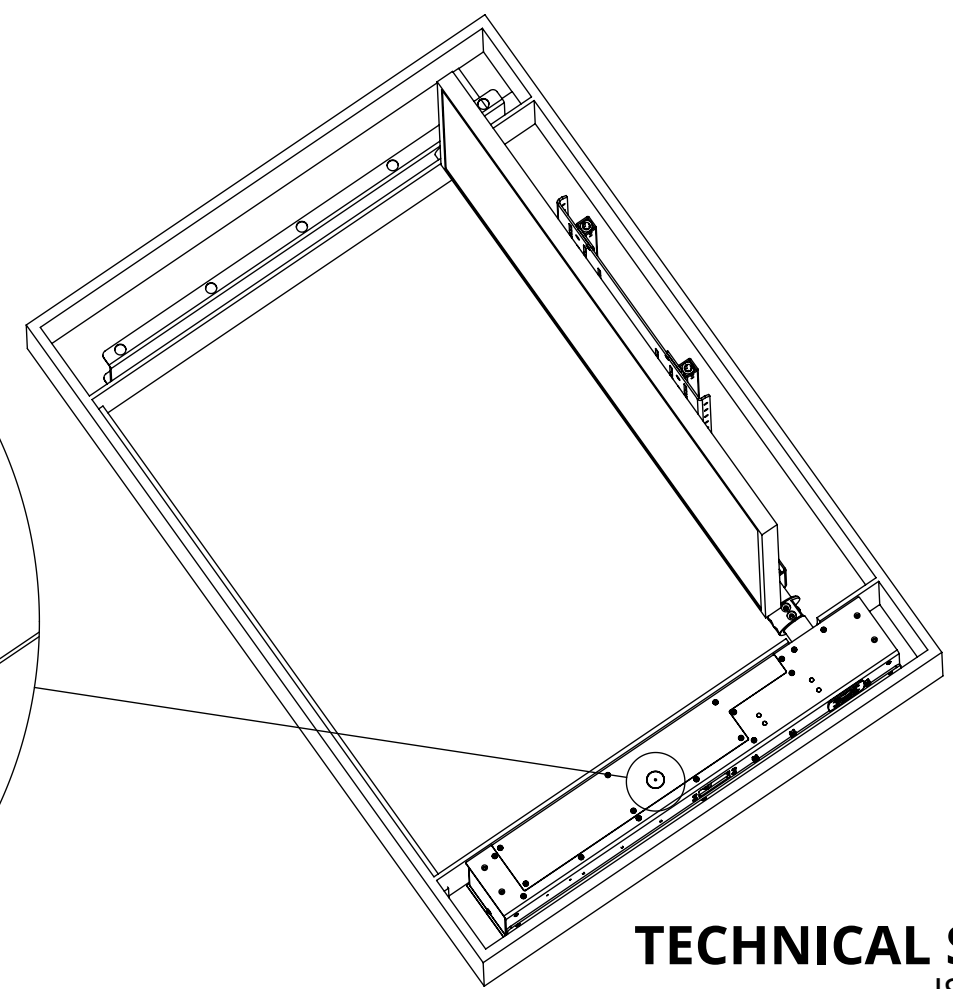
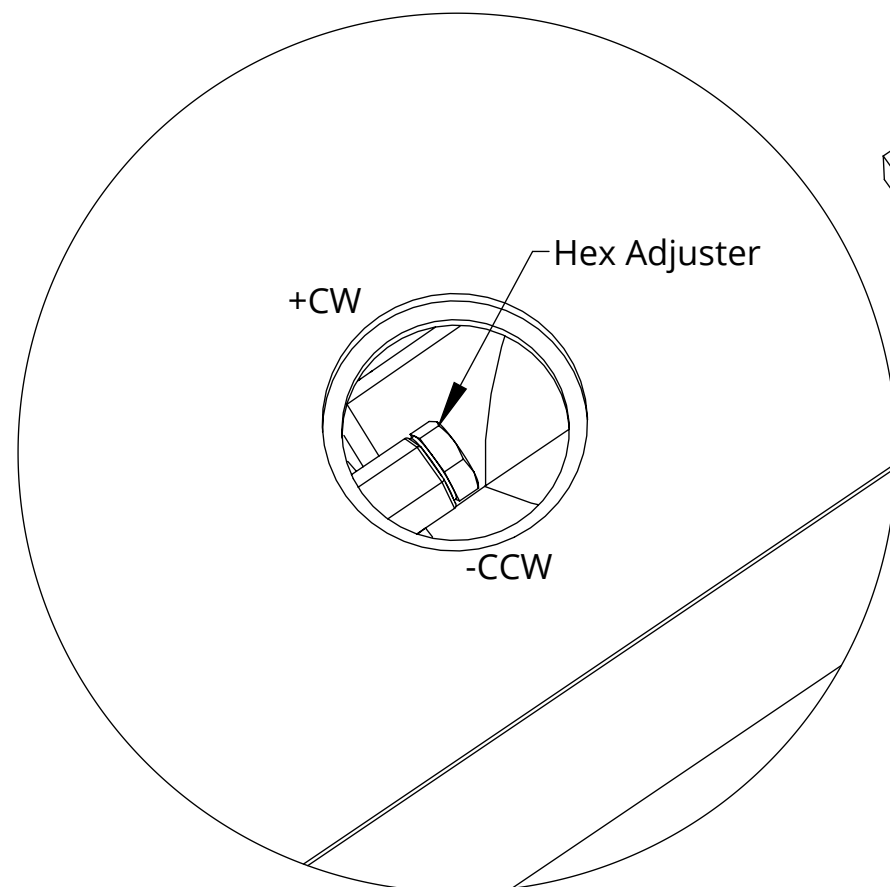
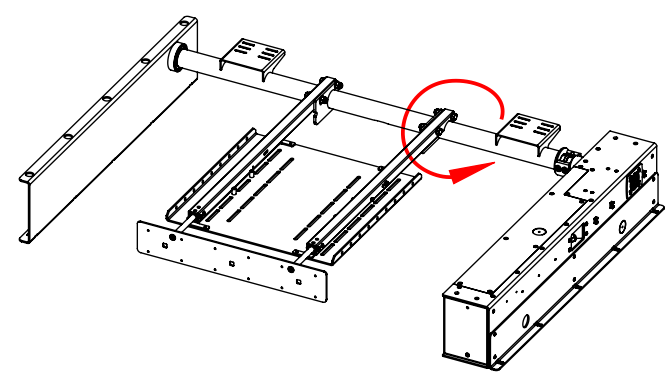
1. Remove top panel to access top of mechanism.



2. Remove black plastic bung in top of right gearbox. M5 tapped hole allows use of M5 bolt to aid removal.



Rotating the Hex Adjuster CLOCKWISE will trim the down position to further close the mechanism

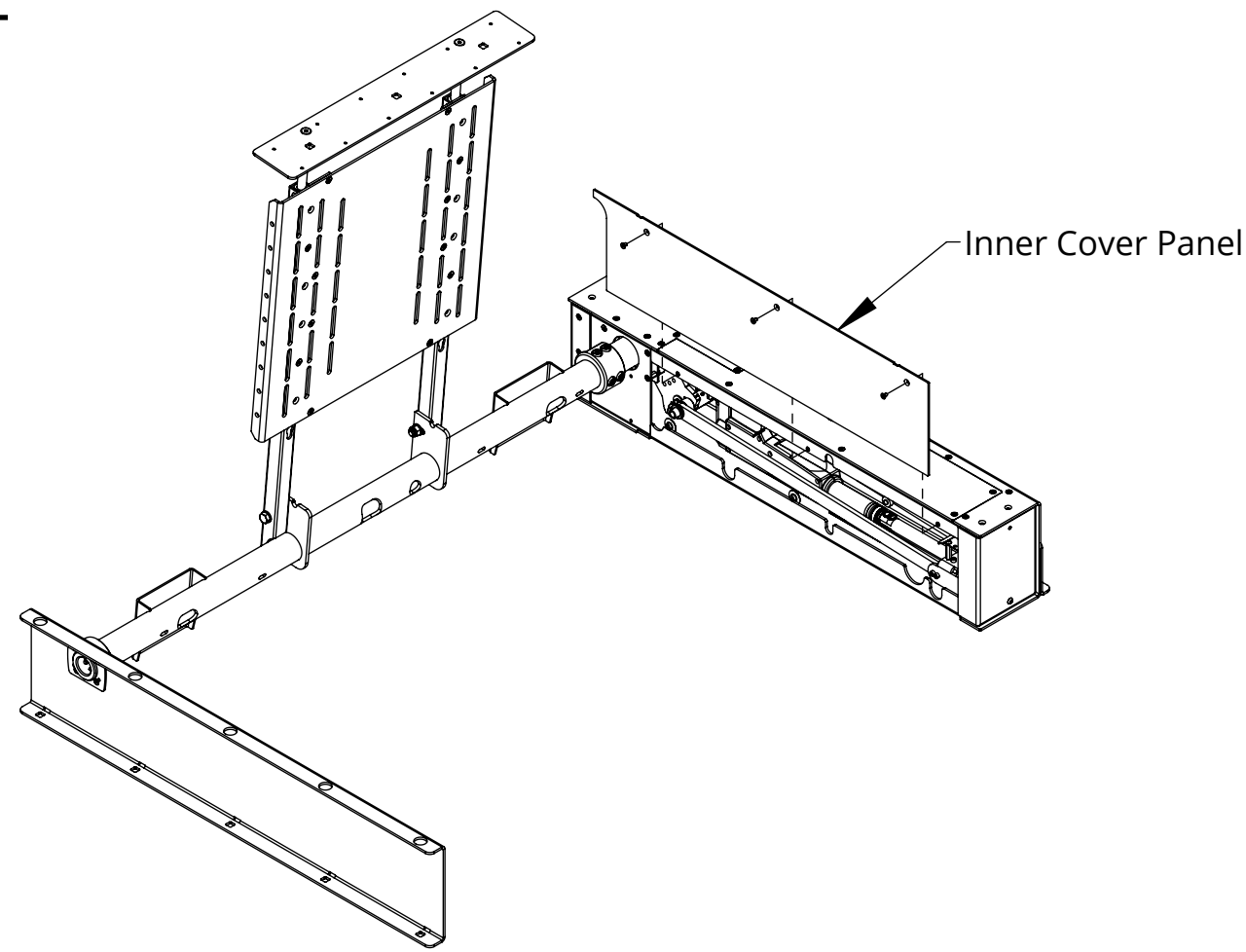


# HU5

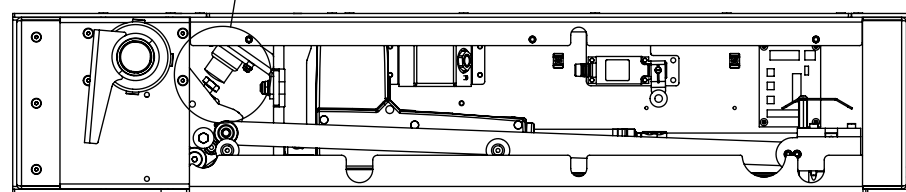
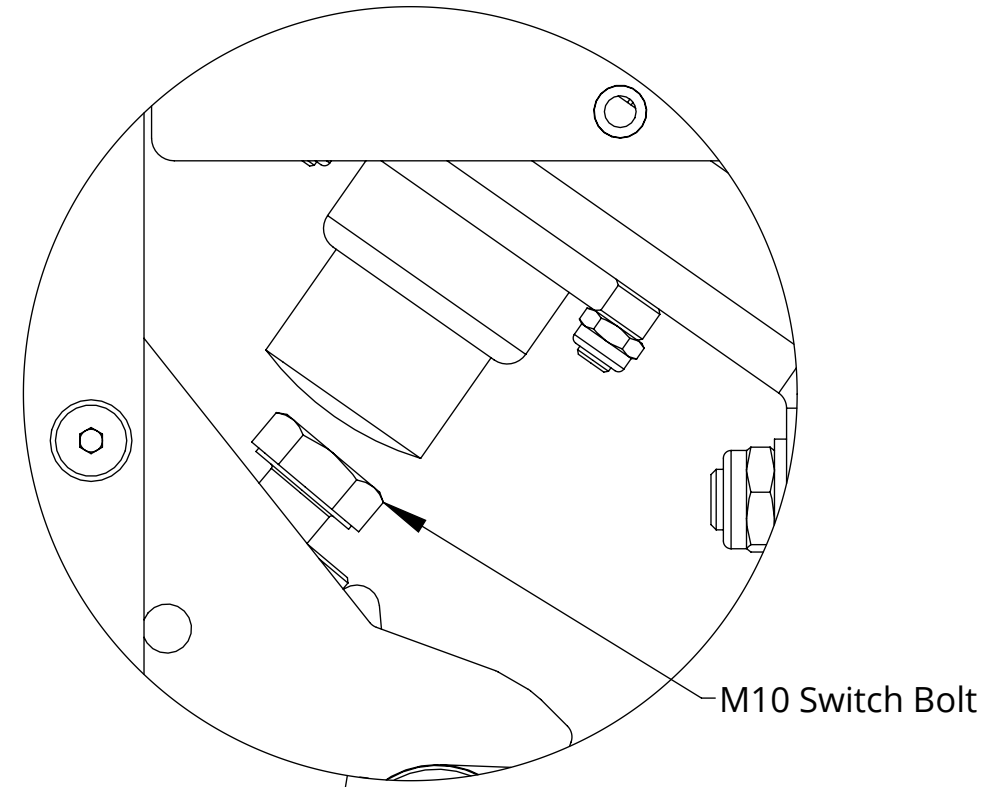
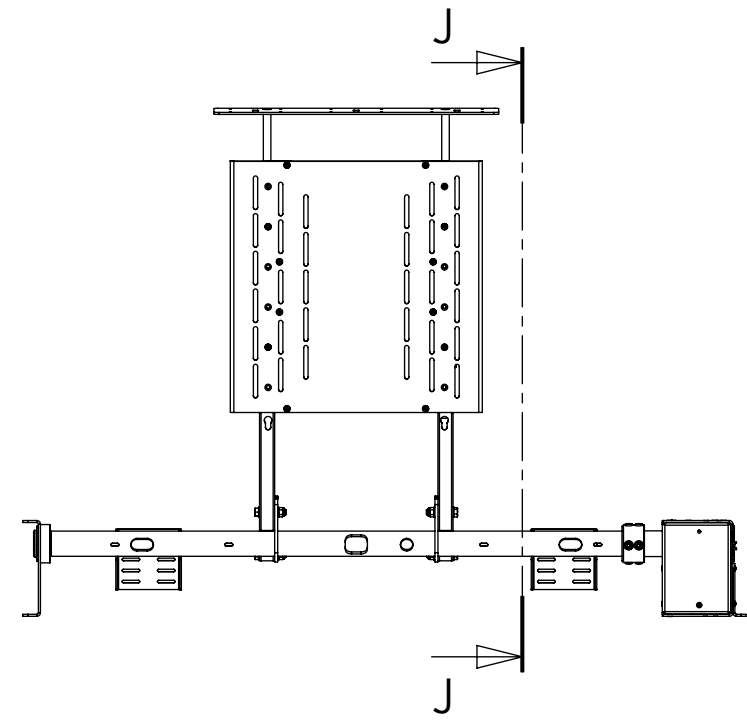
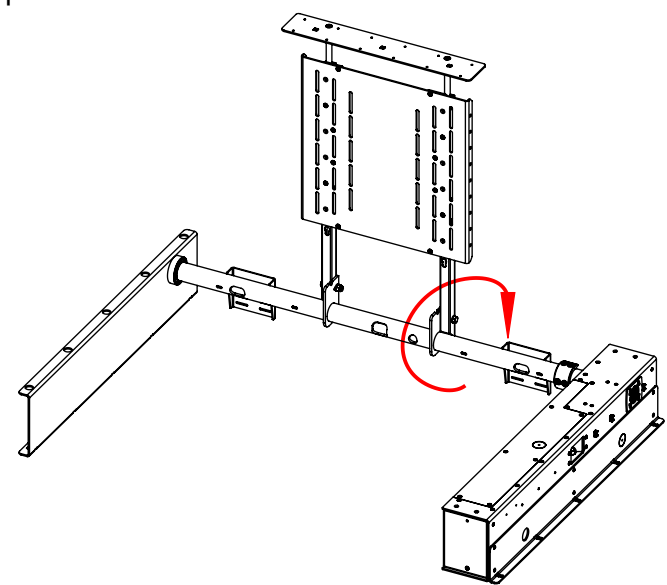
## HINGE UP MECHANISM

### UP SWITCH ADJUSTMENT

- 1. Remove the Inner cover panel secured by 3 x M5 X 12mm CSK Bolts
- 2. Send the mechanism IN approx. 5° to release the up switch.
- 3. M10 Switch Bolt can be adjusted to fine tune UP position.



Rotating the Switch Bolt CLOCKWISE will trim the up position to further open the mechanism



SECTION J-J  
SCALE 1 : 8