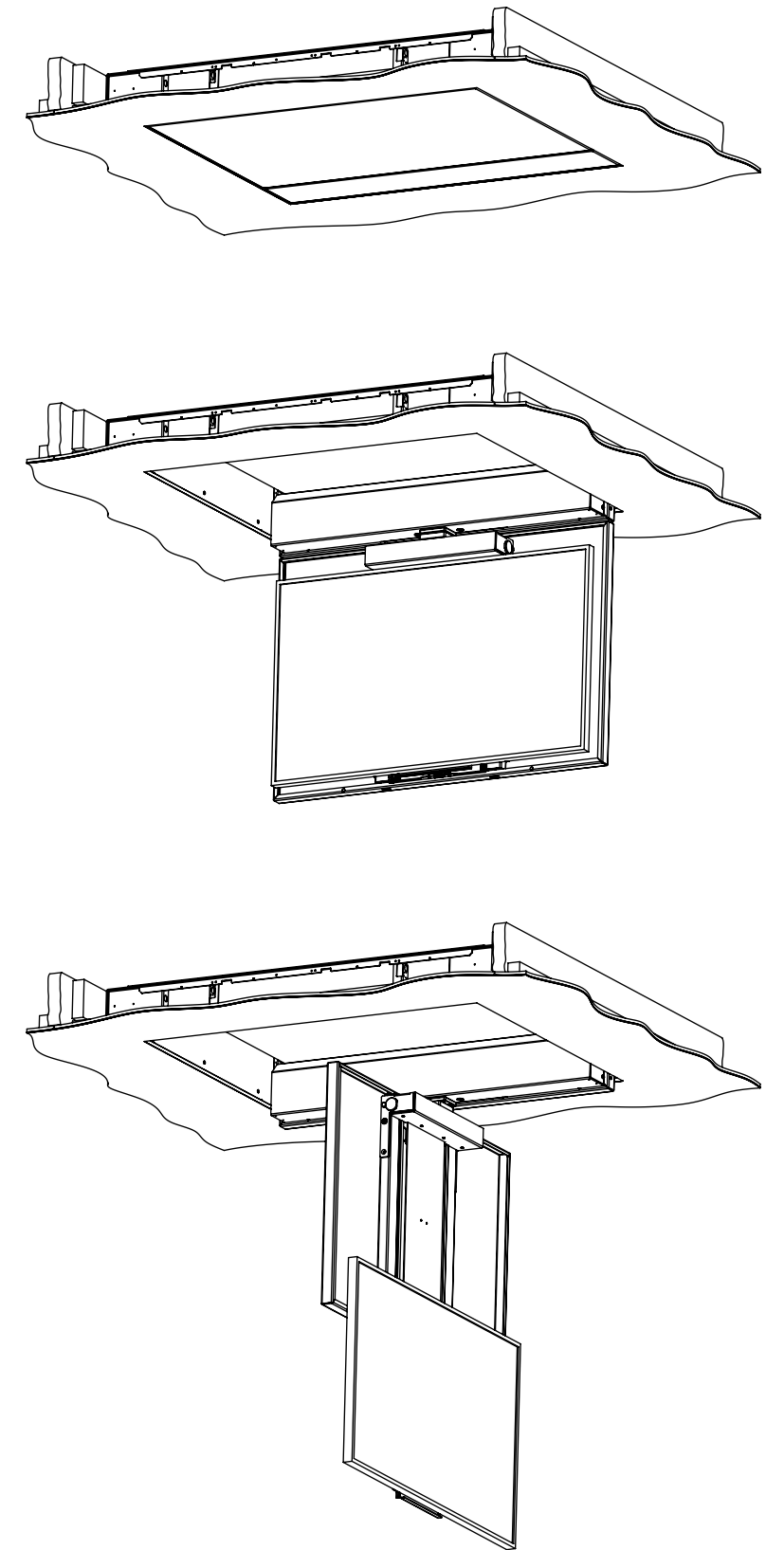
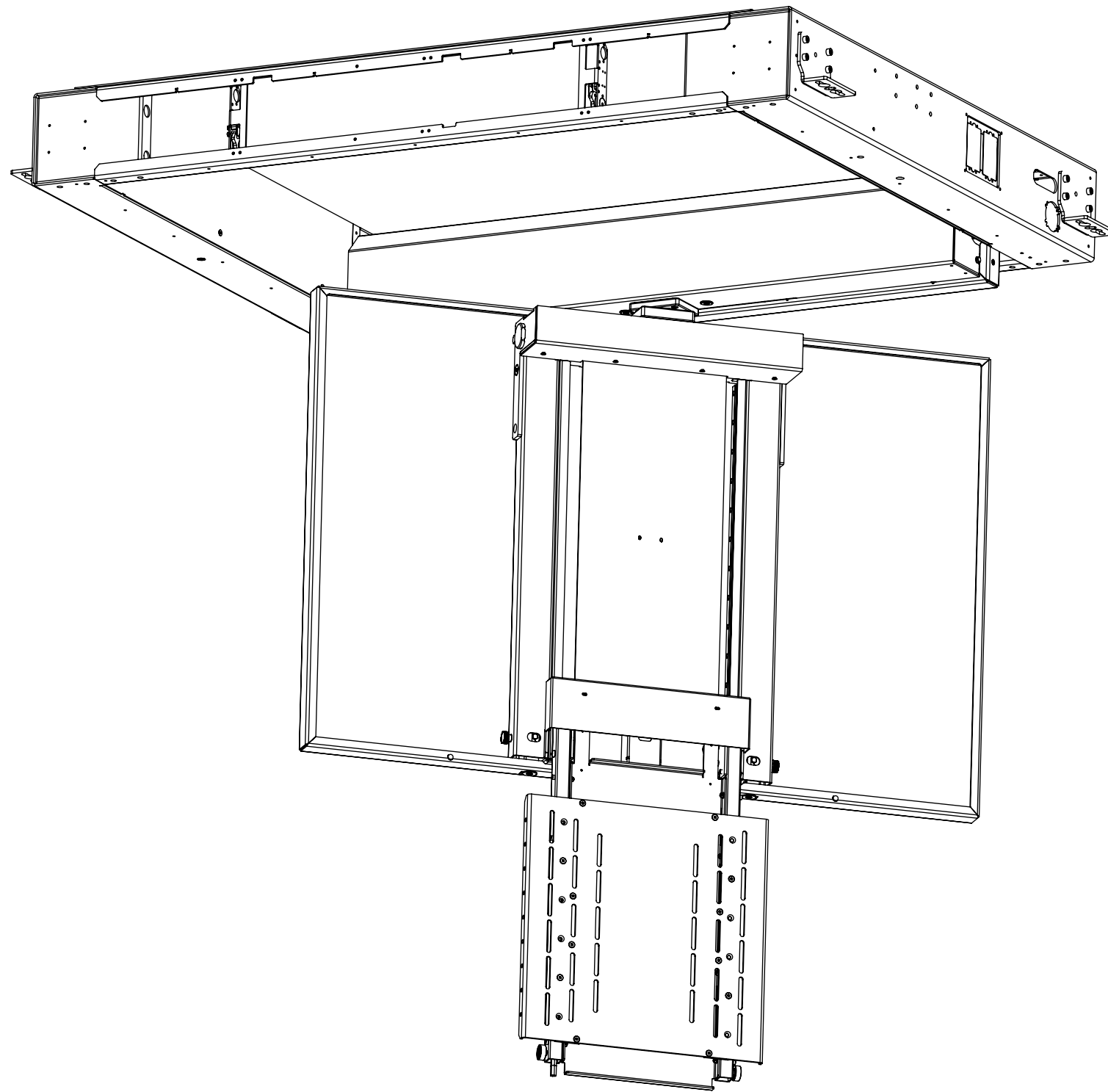


CHRST5-RES

RESIDENTIAL CEILING HINGE RANGE WITH SWIVEL AND TELESCOPE



CHRST5-RES

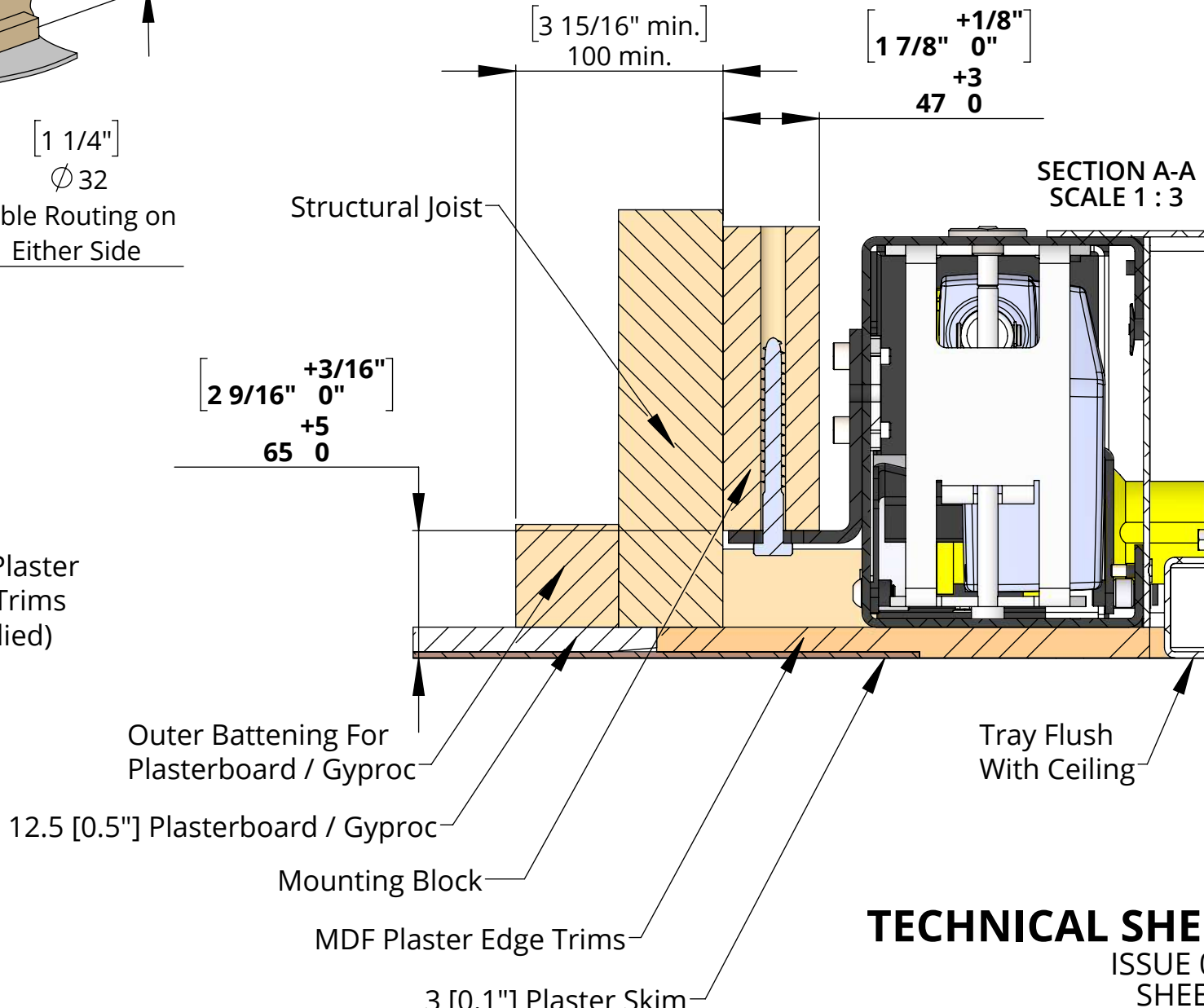
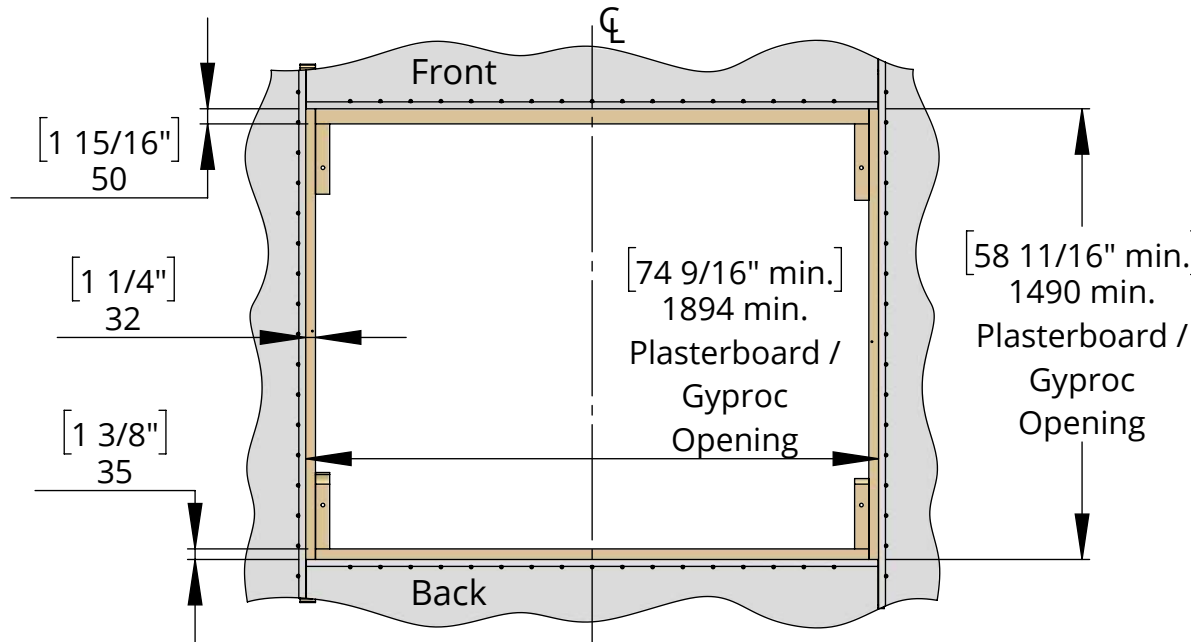
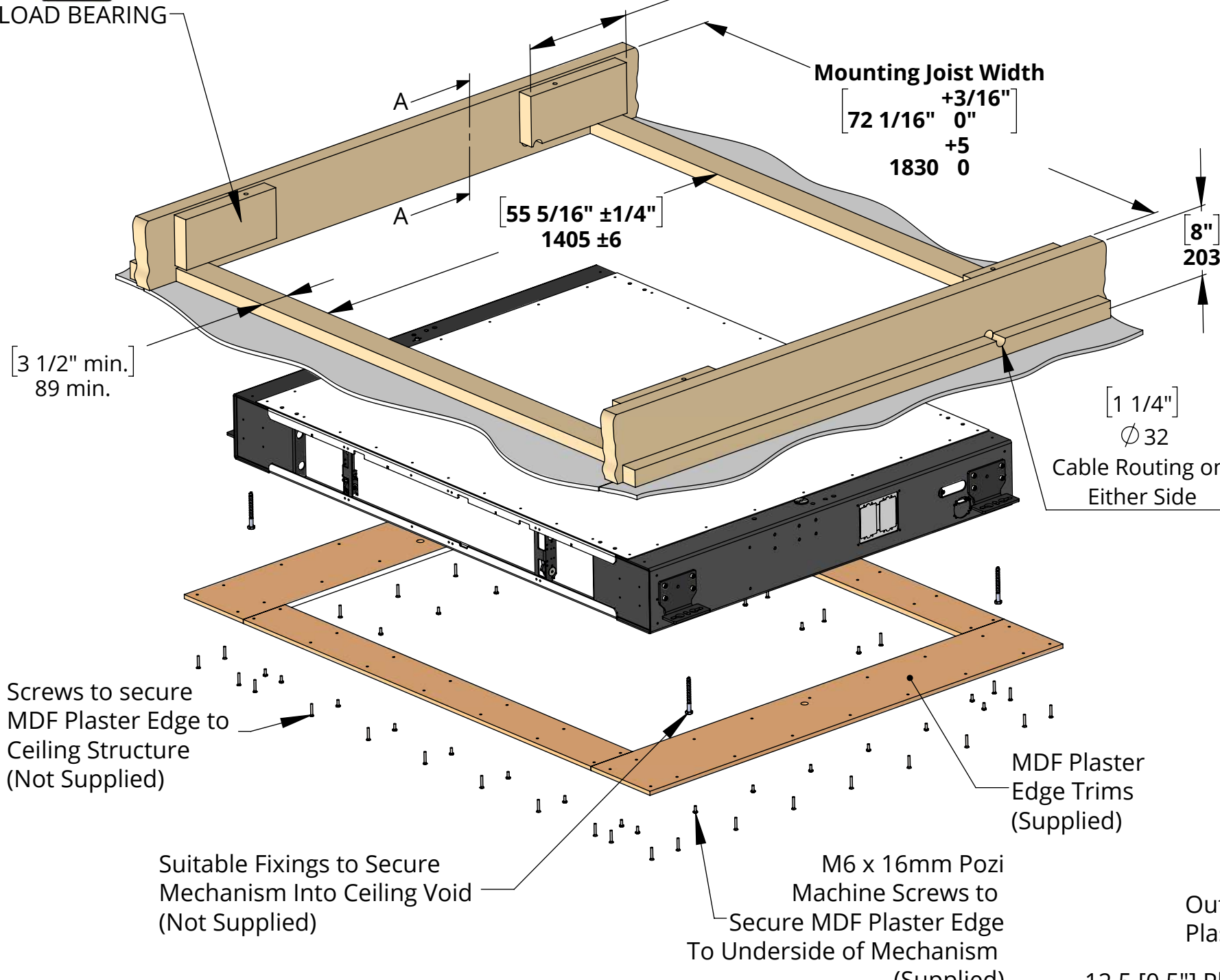
RESIDENTIAL CEILING HINGE RANGE

WITH SWIVEL AND TELESCOPE

SPECIFICATION	MEASUREMENTS
Product Dimensions	1824mm [71 13/16"] W x 1305mm [51 6/16"] L x 210mm [8 4/16"] D
Product Weight	165Kg [364lb]
Maximum Screen Size	1330mm [52 6/16"] W x 800mm [31 8/16"] L x 100mm [3 15/16"] D
Maximum Weight Capacity	25Kg [55lb] Max. <i>*Assuming Screen Weight Biased Low (3/4 Screen Height)</i>
Packaging Dimensions	1860mm [73 4/16"] W x 1480mm [58 4/16"] L x 440mm [17 5/16"] D
Shipping Weight	242Kg [534lb]
Maximum Rotation	90 ° on Hinge, 180° CW and CCW on Swivel
Movement Type	Motorised
Control System	Housed Internally - Accessible by Internal Access Hatch
Power Supply Required	110V - 240V AC 50/60Hz
Power Consumption Max.	720W
Power Consumption Standby	3W
Mounting Patterns Supported	VESA 400, 300, 200 W x 400, 300, 200 H
Control Options	IR Remote, RS232, Contact Closure
Product Options / Features	Specific B&O and Loewe mounts / adapters, Custom RAL paint finishes, Marine suitable version
Package Contents	Mechanism, IR remote control
Environment	Residential / Commerical
Colour	WHITE - RAL9910 Satin Finish
Marine Suitable	No - Marine Indoor and Outdoor Versions Available

RESIDENTIAL CEILING HINGE RANGE WITH SWIVEL AND TELESCOPE

OPTION 1 - FIXING TO WOODEN BEAMS



CHRST5-RES

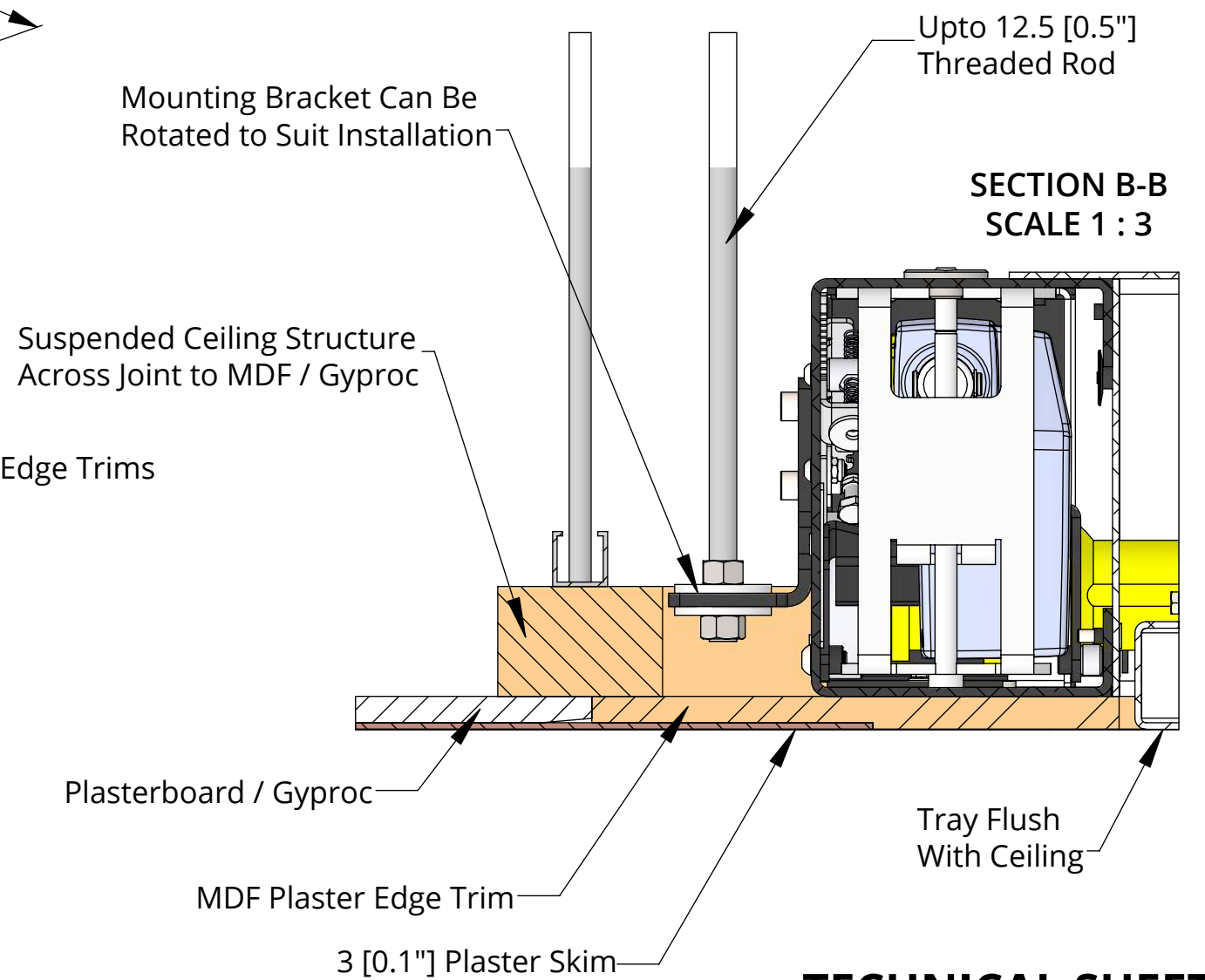
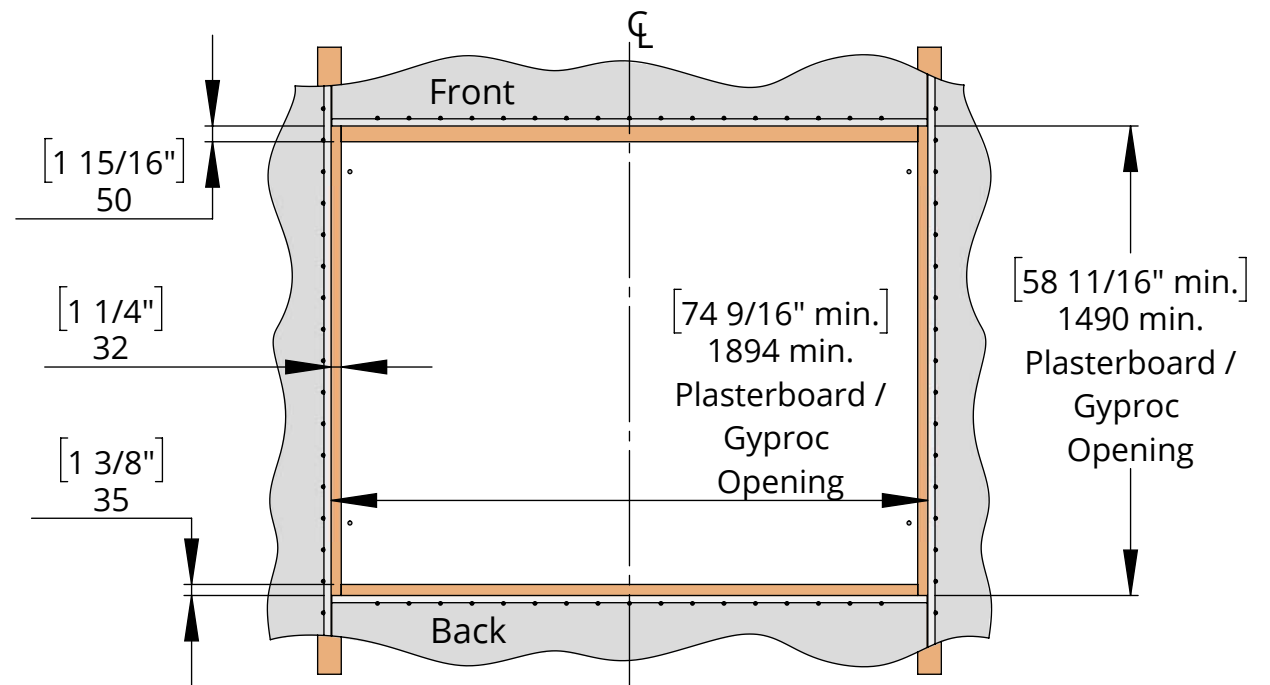
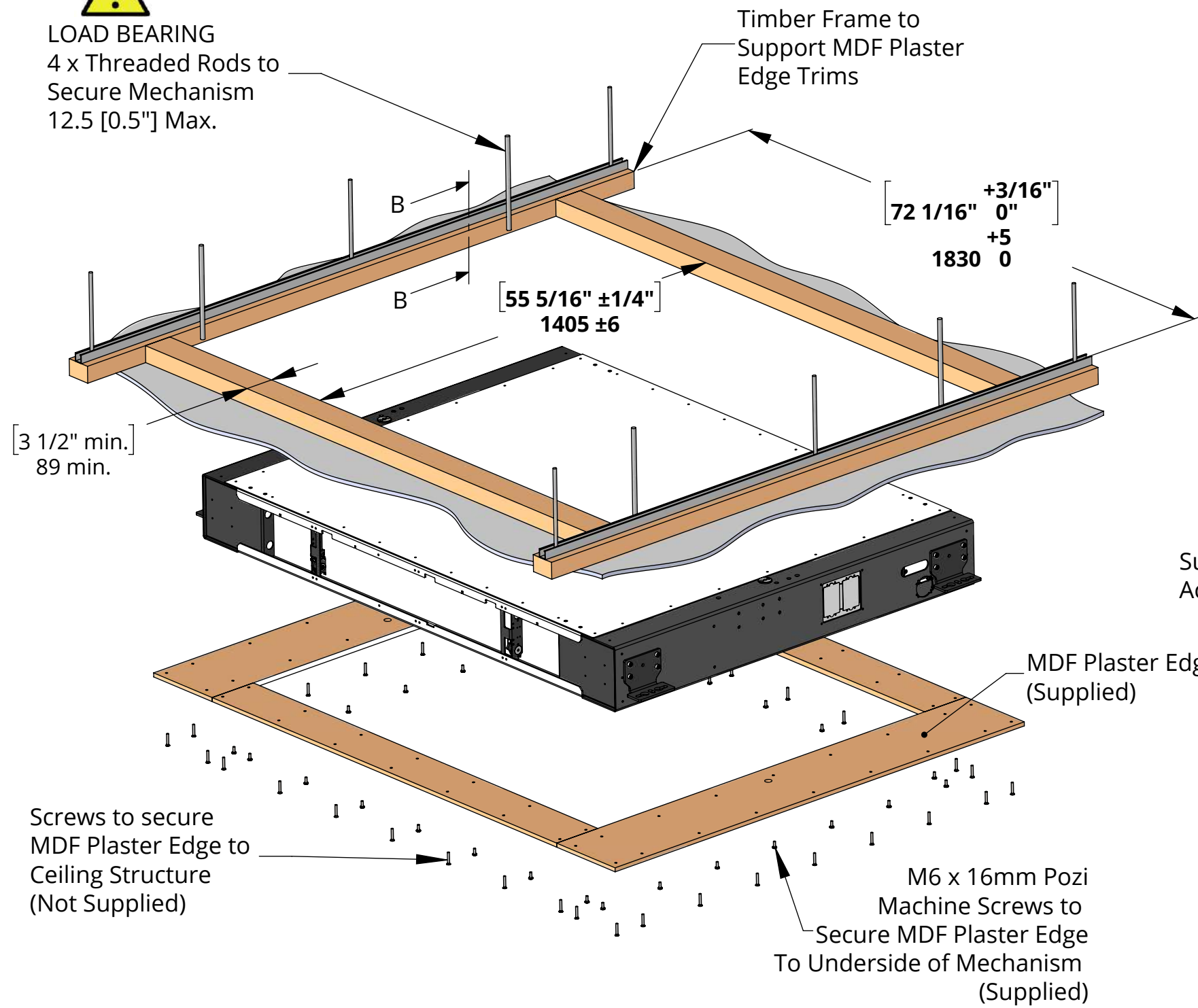
RESIDENTIAL CEILING HINGE RANGE

WITH SWIVEL AND TELESCOPE

OPTION 2 - FIXING INTO SUSPENDED CEILING



LOAD BEARING
4 x Threaded Rods to
Secure Mechanism
12.5 [0.5"] Max.



CHRST5-RES

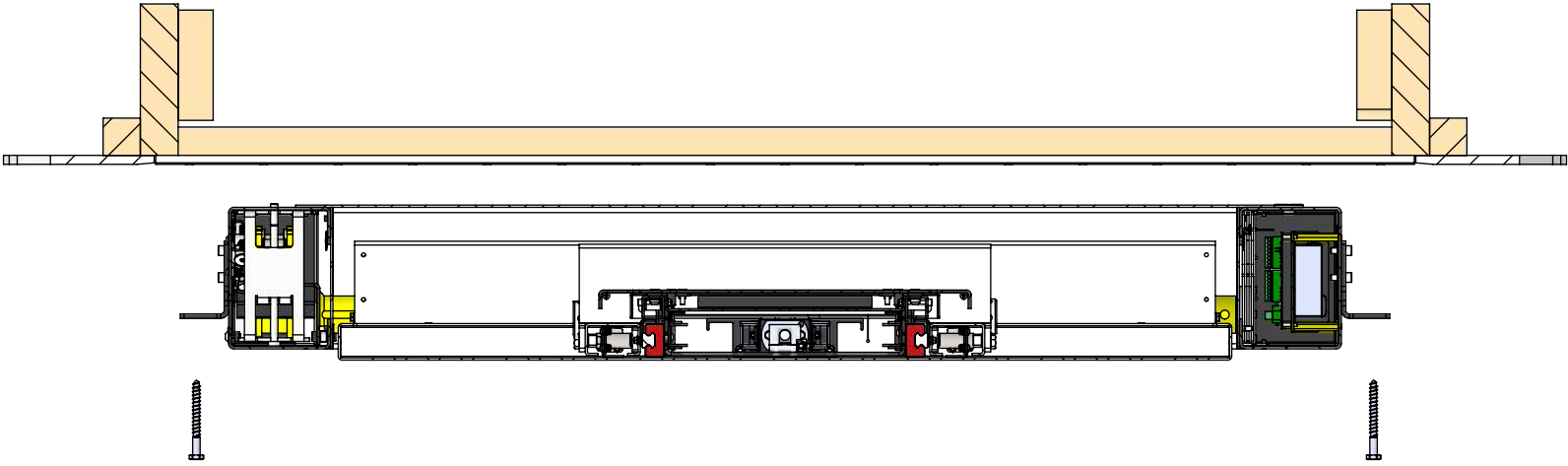
RESIDENTIAL CEILING HINGE RANGE

WITH SWIVEL AND TELESCOPE

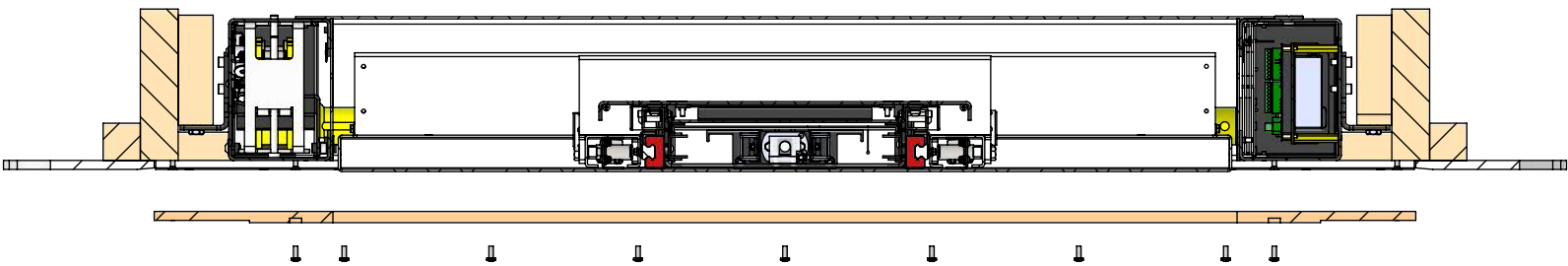
INSTALLATION PRECEDURE

THE INSTALLATION PROCEDURE IS CARRIED OUT
IN THE SAME WAY FOR OPTION 1 OR OPTION 2

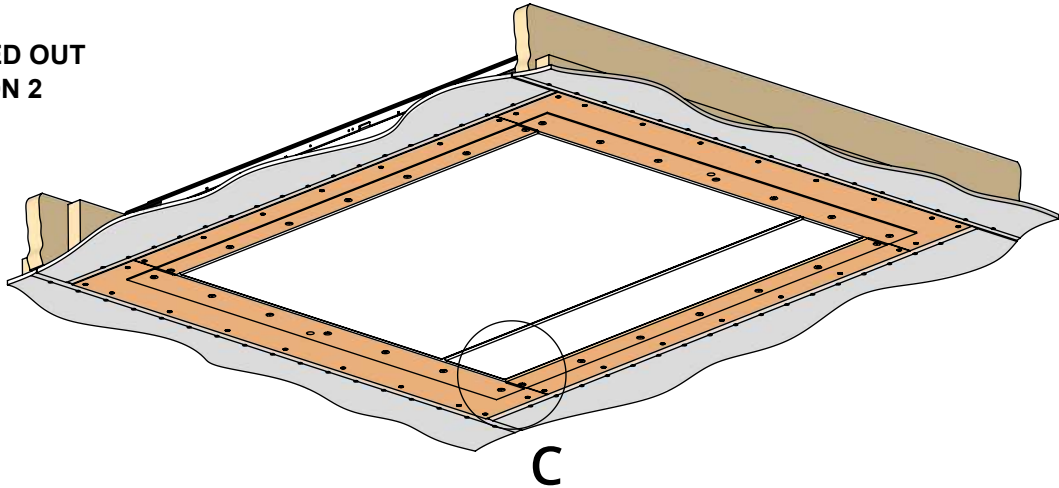
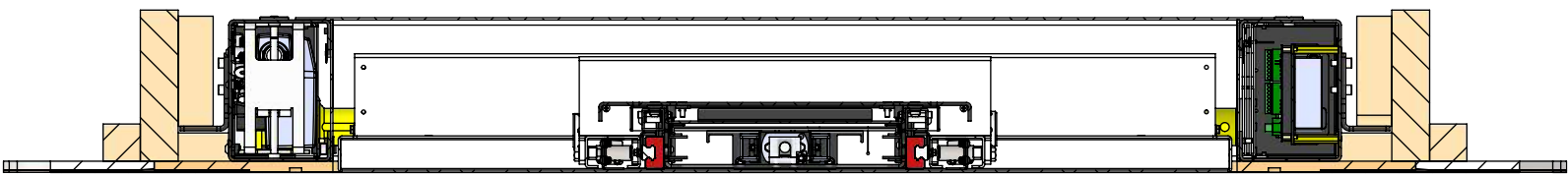
1. MECHANISM INSTALLATION



2. MDF PLASTER TRIM INSTALLATION



3. PLASTERING



28 No. OFF
SS M6 x 16MM
POZI (SUPPLIED)

7mm [1/4"]
Shadow Gap
Around Tray

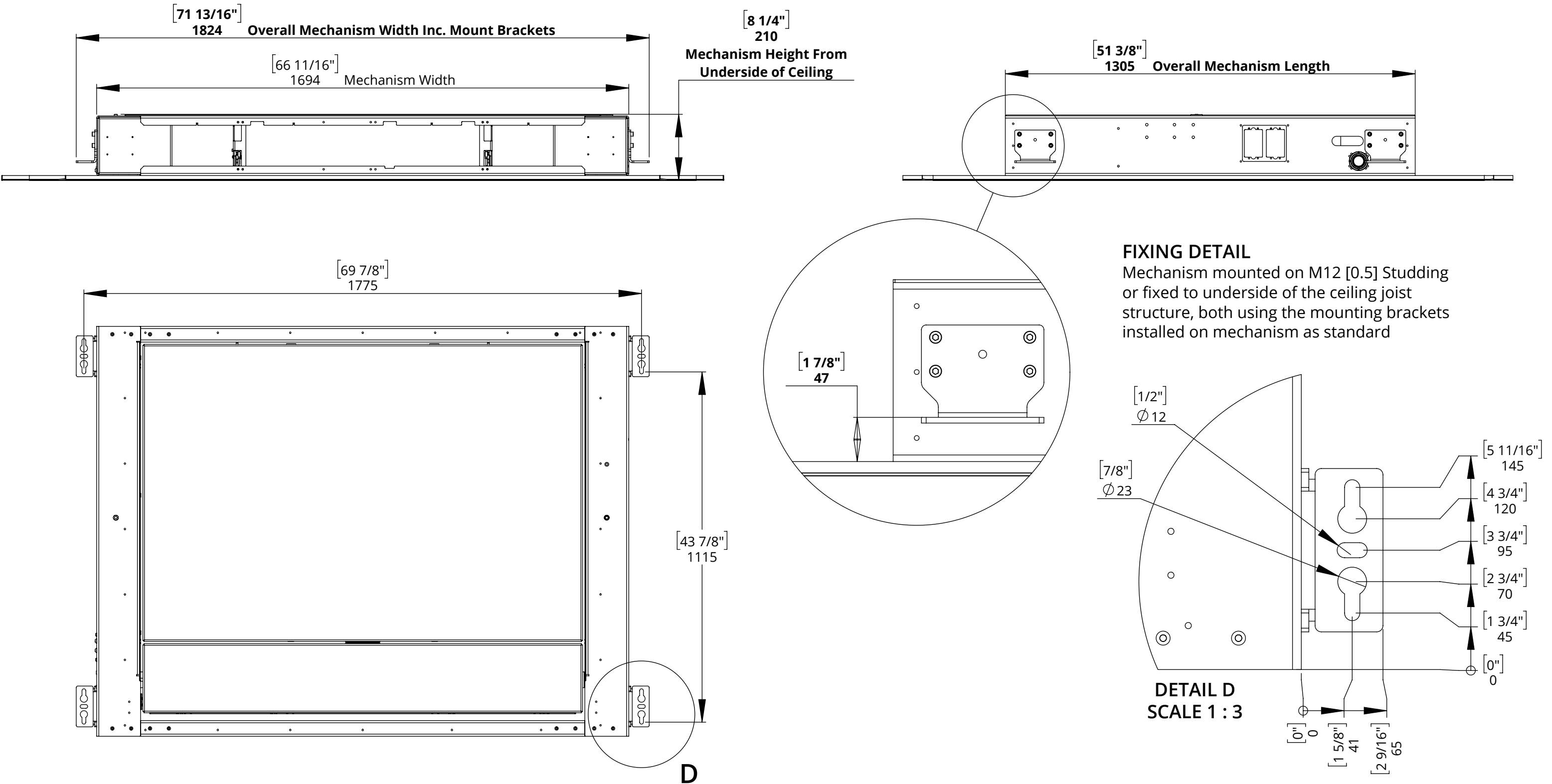
36 No.OFF
MDF SCREW
(NOT SUPPLIED)

DETAIL C
SCALE 1 : 3

CHRST5-RES

RESIDENTIAL CEILING HINGE RANGE WITH SWIVEL AND TELESCOPE

MECHANISM DIMENSIONS - CLOSED



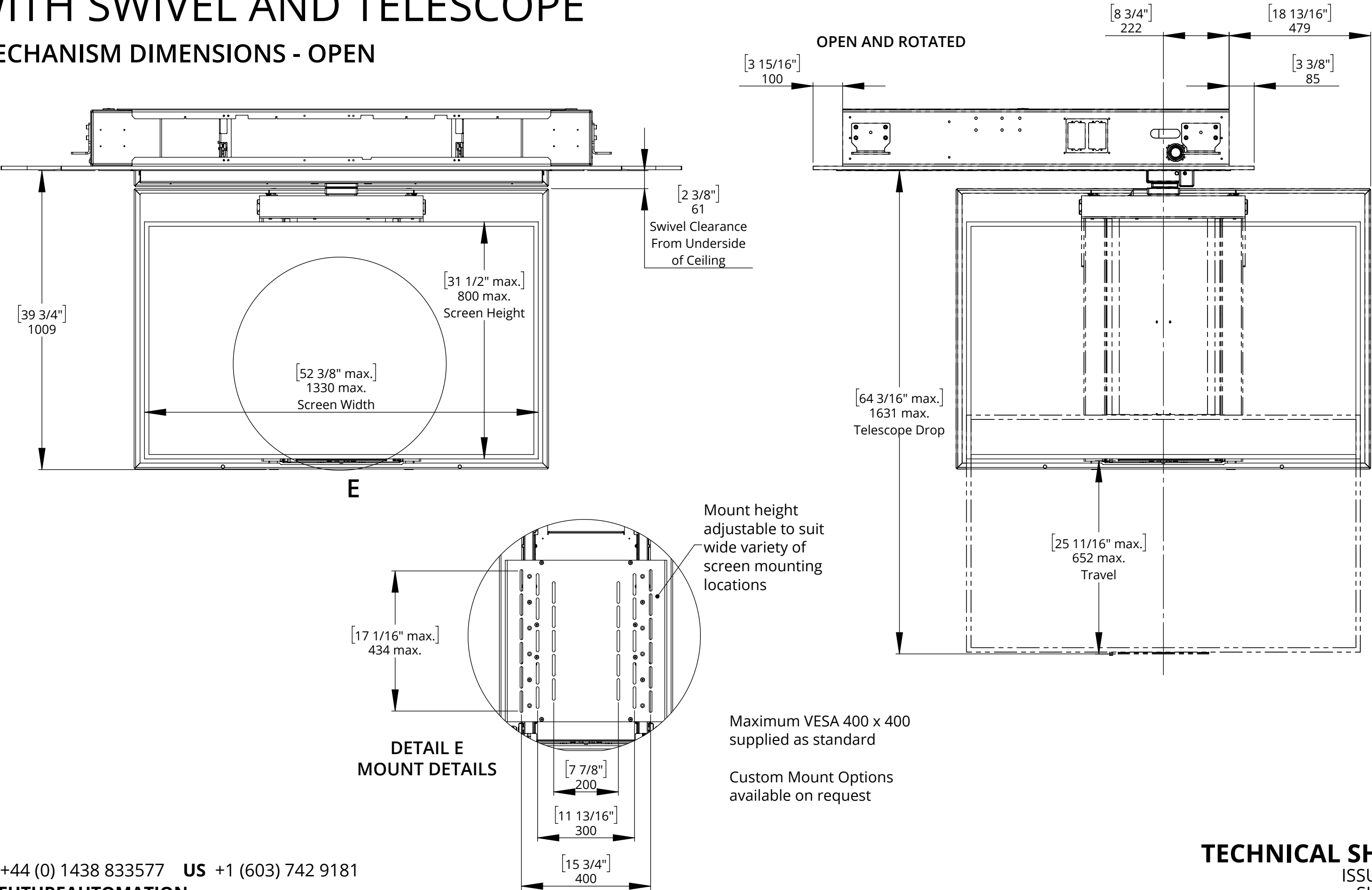
CHRST5-RES

RESIDENTIAL CEILING HINGE RANGE WITH SWIVEL AND TELESCOPE



future automation

MECHANISM DIMENSIONS - OPEN

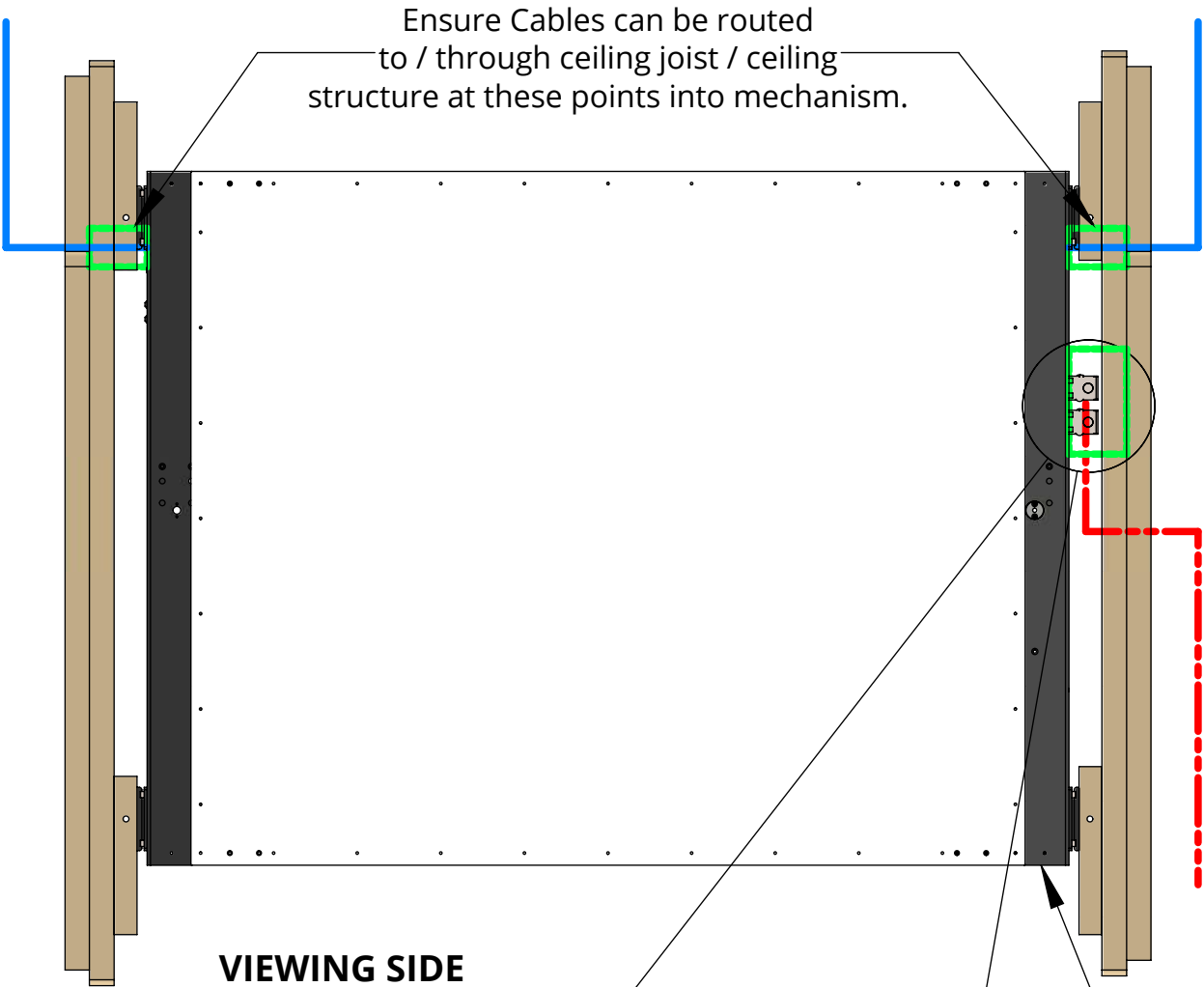


CHRST5-RES

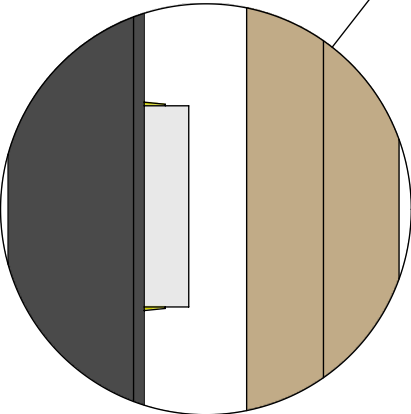
RESIDENTIAL CEILING HINGE RANGE

WITH SWIVEL AND TELESCOPE

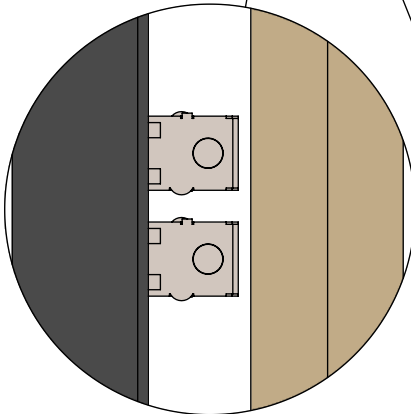
CEILING PREPARATION



VIEWING SIDE



UK 2G Mains
Plasterboard
Back Box



2 No.
US J-Box

Cable Routing

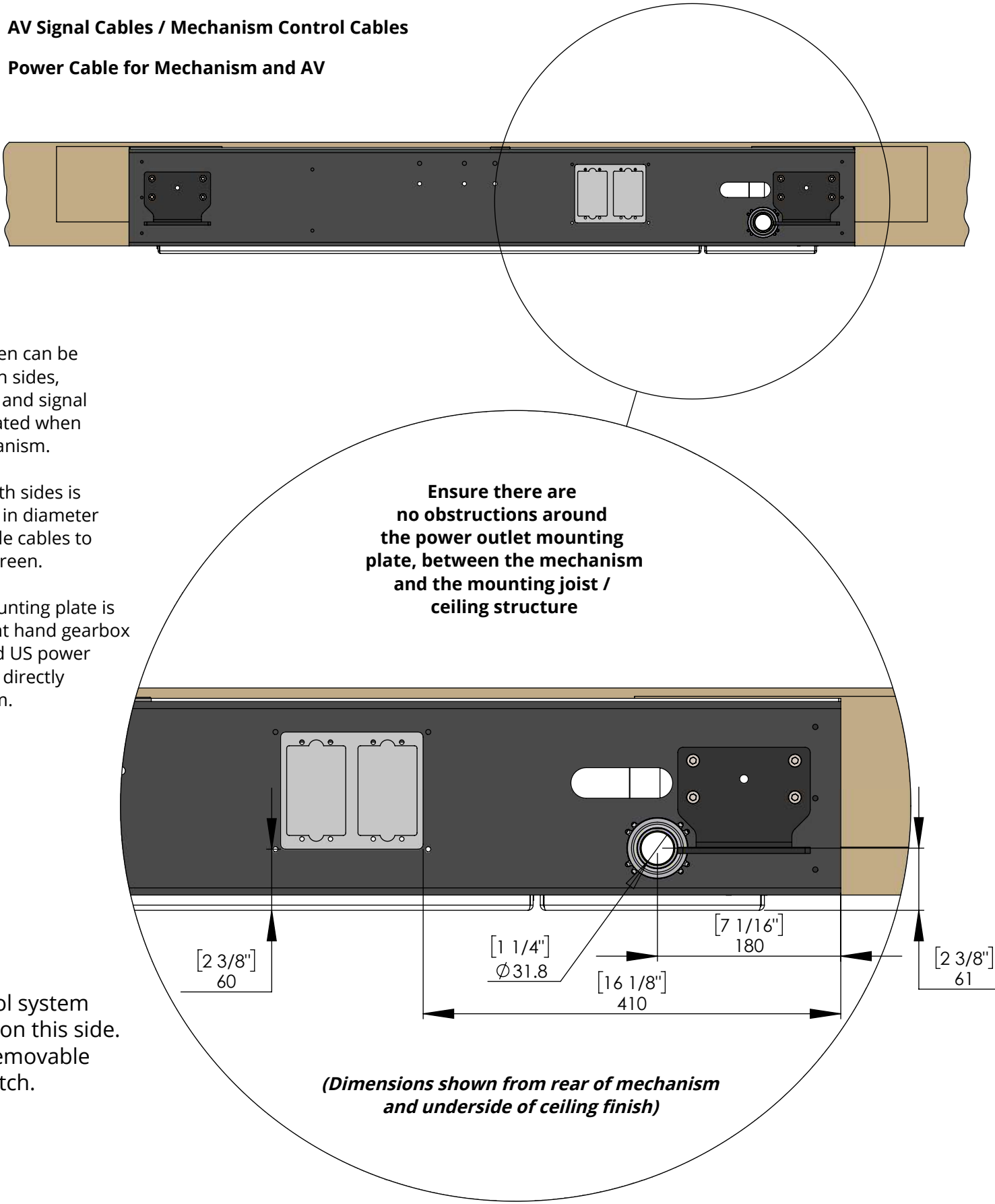
Cables for the screen can be routed in from both sides, allowing for power and signal cables to be separated when entering the mechanism.

The opening on both sides is MIN. 32mm [1.3"] in diameter allowing for multiple cables to be routed to the screen.

A power outlet mounting plate is supplied in the right hand gearbox allowing for UK and US power outlets to be wired directly into the mechanism.

Mechanism control system housed internally on this side. Accessible from removable internal access hatch.

— AV Signal Cables / Mechanism Control Cables
- - - Power Cable for Mechanism and AV



(Dimensions shown from rear of mechanism
and underside of ceiling finish)