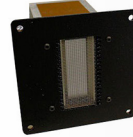


Celesta FRM-2



Exceptional Ribbon Tweeter

A ribbon tweeter unlike any other; the ribbon tweeter is the best performing tweeter we have ever seen. Custom built to our specifications its clarity and dynamics are unmatched.

- Custom designed ribbon tweeter
- Extremely clear, fast, flat high-end response
- Extends over an octave above the scope of human hearing



Powerful Woofer

Six inch woofer with a 3.1 inch diameter long throw voice coil using a high powered motor allowing for smooth air flow melds seamlessly into the ribbon tweeter thanks to its low mass and high speed while performing incredible feats in bass response thanks to the Alta XTL bass tuning system.

- Uniflow™ Aluminum diecast chassis
- Hybrid™ Neodymium/Ferrite magnet system
- Titanium coil bobbin
- 3" Large Hexatech™ Aluminum voice coil
- Coppersleeve Neolin Motor
- High power handling
- High Xmax, Low Qts, Low Fs, High QMS

The Alta Audio Celesta FRM-2 Full Range Monitor is a jewel of audiophile loudspeaker engineering and design housed in an ultra hard ultra high gloss polyester finished cabinet featuring both modern and retro design elements. While its aesthetic beauty is obvious, its engineering is the culmination of 35 years of loudspeaker design expertise guiding a 2 year research and development project. The speaker incorporates the latest state of the art components in a new cabinet featuring DampHard: a multi density layered construction which presents a hard surface externally, while damping out unwanted resonances. The result is a clean silent background on which the fine details of the music are evident. Our custom designed drivers produce exceptionally fast, clean, powerful, and deep bass thanks to the use of our proprietary Alta XTL bass tuning system which gives this monitor speaker bass you would expect from a full sized reference speaker.

Specifications

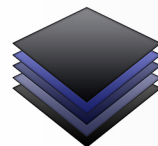
Height: 17 inches including 1in spikes
Depth: 15.5 inches (widest point)
Impedance: 4 Ohms
Sensitivity: 87.5db / 2.83 Volts @ 1Meter

Width: 10.75 inches (widest point)
Weight: 55lbs
Rated Power: 50-200 Watts
Freq. Response: 29Hz to 47kHz



Clearer, Faster, More Powerful Bass

All our cabinets are specially designed with our proprietary sonic geometry, making our cabinets themselves musical instruments that boost the bass of our speakers while delivering unparalleled clarity and speed.



DampHard

Hear the Music, Not the Speaker

Our proprietary multi-layer, multi-density cabinet material dampens resonance at all frequencies. With a cabinet dead of resonance the speaker fades into the music creating clear, open, and dimensional sound reproduction.